

A.P. #164-451-24

## CORNER RECORD

COUNTY OF Marin T.    R.    MERIDIAN    CALIFORNIA

CORNER TYPE: GOVT. CORNER ☐ MEANDER ☐ RANCHO ☐ CONTROL ☐ OTHER ☒

CORNER IDENTIFICATION — DATE OF VISIT June 19 86

CORNER — LEFT AS FOUND ☐ FOUND AND TAGGED ☐ REESTABLISHED OBLITERATED CORNER ☒ REBUILT ☐

PHYSICAL DESCRIPTION OF CORNER FOUND; EVIDENCE AND METHOD USED TO IDENTIFY OR REESTABLISH

Northerly corner of Lot 24, Lucas Valley Unit 7 reset from found County  
Monuments as shown on recorded map (14 RM 55)

A.P. 164-451-24

PHYSICAL DESCRIPTION OF MONUMENTS. REBUILT OR PERPETUATED

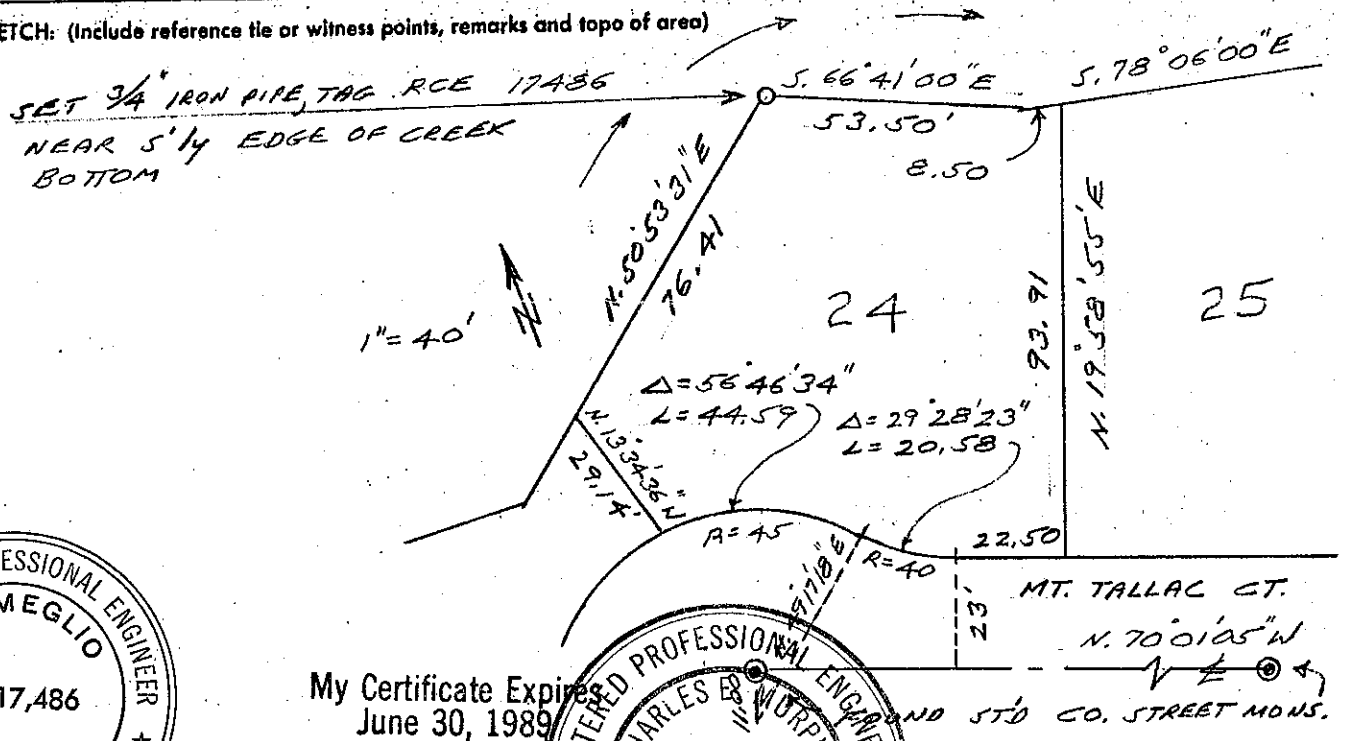
Set 3/4" iron pipe, RCE 17486

CALIFORNIA COORDINATE SYSTEM ORDER: FIRST ☐ SECOND ☐ THIRD ☐

STATIONS USED: NGS (USC & GS) ☐ STATE ☐ COUNTY ☐ OTHER ☐ STATION    STATION   

ZONE    ELEVATION    NORTHINGS (Y)    EASTINGS (X)   

SKETCH: (Include reference tie or witness points, remarks and topo of area)

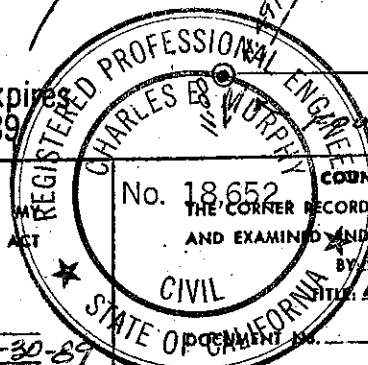


My Certificate Expires  
June 30, 1989



## SURVEYOR'S CERTIFICATE

THIS CORNER RECORD WAS PREPARED BY ME OR UNDER MY  
DIRECTION IN CONFORMANCE WITH THE LAND SURVEYORS ACT

ON June 30 19 86SIGNED: V. A. MeglioL.S. or R.C.E. No.: RCE 17486 Exp 6-30-89

## COUNTY SURVEYOR'S CERTIFICATE

THE CORNER RECORD WAS RECEIVED July 2 19 86  
AND EXAMINED AND FILED July 3 19 86

BY Charles E. Murphy  
Deputy County Surveyor

STATEMENT ON BACK OF SHEET

YES ☐ NO ☒