

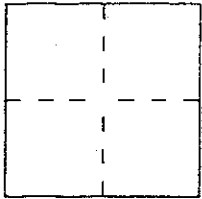
# CORNER RECORD

AP # 164-394-06  
98-07

Document Number \_\_\_\_\_

City of SAN RAFAEL County of \_\_\_\_\_, California

Brief Legal Description LOT 25B, LUCAS VALLEY UNIT 4 (IRM 69)



## CORNER TYPE

Government Corner ☐ Control ☐  
Meander ☐ Property ☒  
Rancho ☐ Other ☐  
Date of Survey FEB. 198

## COORDINATES (Optional)

N. \_\_\_\_\_  
E. \_\_\_\_\_  
Zone \_\_\_\_\_ Datum \_\_\_\_\_  
Elev. \_\_\_\_\_

Corner — Left as found ☐ Found and tagged ☐ Established ☐ Reestablished ☒ Rebuilt ☐

Identification and type of corner found: Evidence used to identify or procedure used to establish or reestablish the corner:

FOUND STANDARD CITY MONUMENTS

A description of the physical condition of the monument as found and as set or reset: SET 1/2" REBARS  
AND 3/4" IRON PIPES WITH PLASTIC CAPS, RCE 30465  
SEE PAGE 2

## SURVEYOR'S STATEMENT

This Corner Record was prepared by me or under my direction in conformance with  
the Land Surveyors' Act on 2-10 19 98

Signed Jay L. H. L.S. or R.C.E. Number RCE 30465

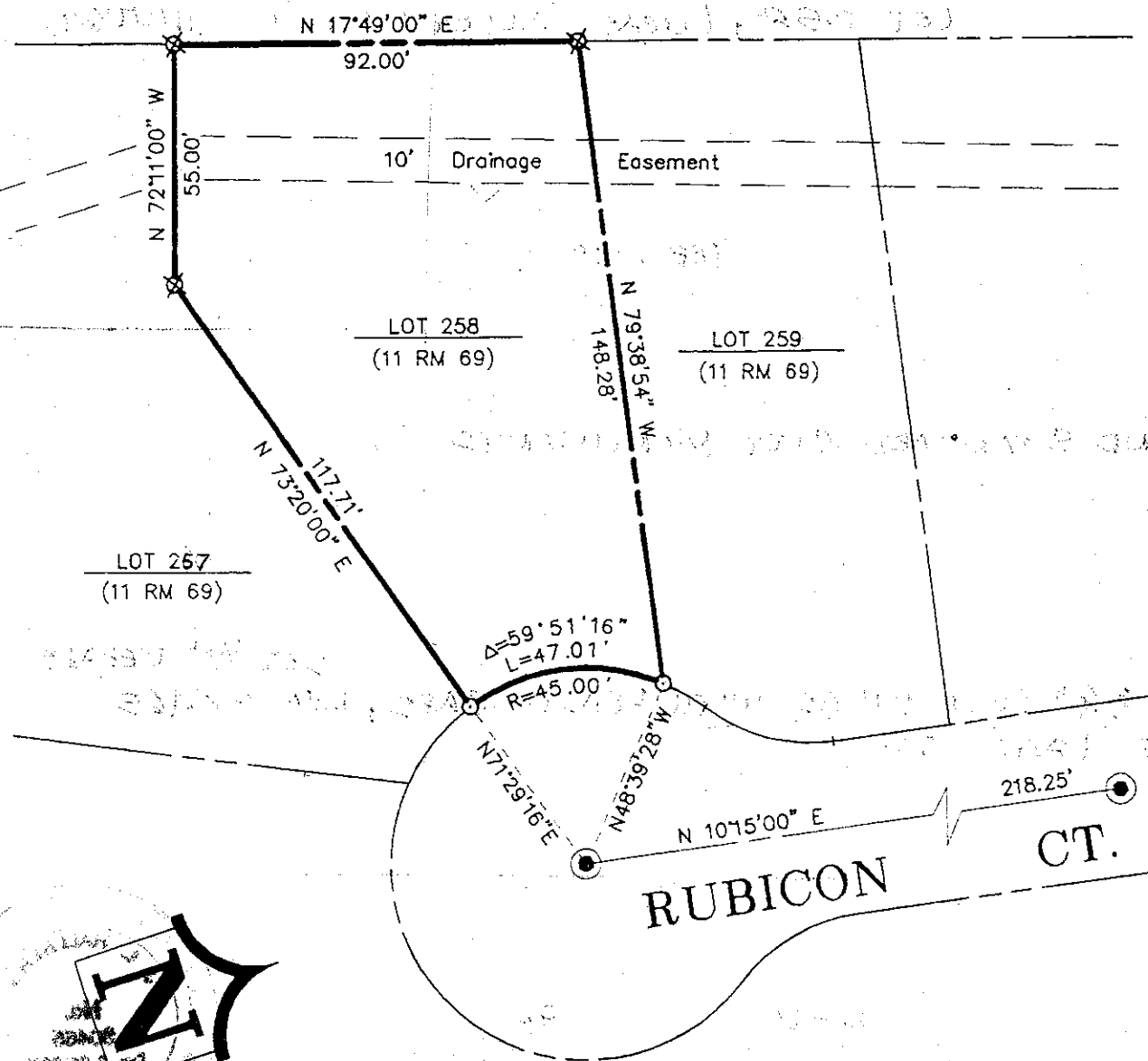
## COUNTY SURVEYOR'S STATEMENT

This Corner Record was received 2-17 19 98 and examined

and filed 2-18 19 98  
Signed John M. Woolley Title Deputy

County Surveyor's Comment \_\_\_\_\_





SCALE: 1" = 40'

## LEGEND

- SET 3/4" IRON PIPE & CAP, RCE 30465
- ⊗ SET 1/2" REBAR & CAP, RCE 30465
- FOUND STANDARD CITY MONUMENTS

98-07