

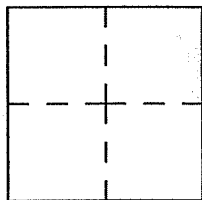
# CORNER RECORD

Document number A.P.N. 164-251-04

City of SAN RAFAEL

County of MARIN, California

Brief Legal Description BEING LOT 61 AS SHOWN UPON "MAP OF ST. FRANCIS HEIGHTS, UNIT ONE",  
10 R.M. 17, MARIN COUNTY RECORDS



## CORNER TYPE

Government Corner ☐

Meander ☐

Rancho ☐

Date of Survey \_\_\_\_\_

Control ☐

Property ☒

Other ☐

## COORDINATES

N. \_\_\_\_\_

E. \_\_\_\_\_

Zone \_\_\_\_\_ Datum \_\_\_\_\_

Elev. \_\_\_\_\_

Corner-- Left as found ☐ found and tagged ☐ Established ☒ Reestablished ☐ Rebuilt ☐

Identification and type of corner found: Evidence used to identify or procedure used to establish or reestablish the corner:

UTILIZED MONUMENTS AS SHOWN UPON 10 R.M. 17 AS A BASIS OF BEARINGS

TO MONUMENT PROPERTY CORNERS OF LOT 61 AS SHOWN UPON ATTACHED  
DRAWING.

A description of the physical condition of the monument as found and as set or reset. \_\_\_\_\_

FOUND WELL MONUMENTS, MEASURED PER 10 R.M. 17

## SURVEYOR'S STATEMENT

This Corner Record was prepared by me or under my direction in conformance with

the Land Surveyor's Act on December 26 2008.

Signed Stephen Jerome Flatland L.S. Number 7744



## COUNTY SURVEYOR'S STATEMENT

This Corner Record was received DECEMBER 29 2008 and examined

and filed FEBRUARY 9 2009

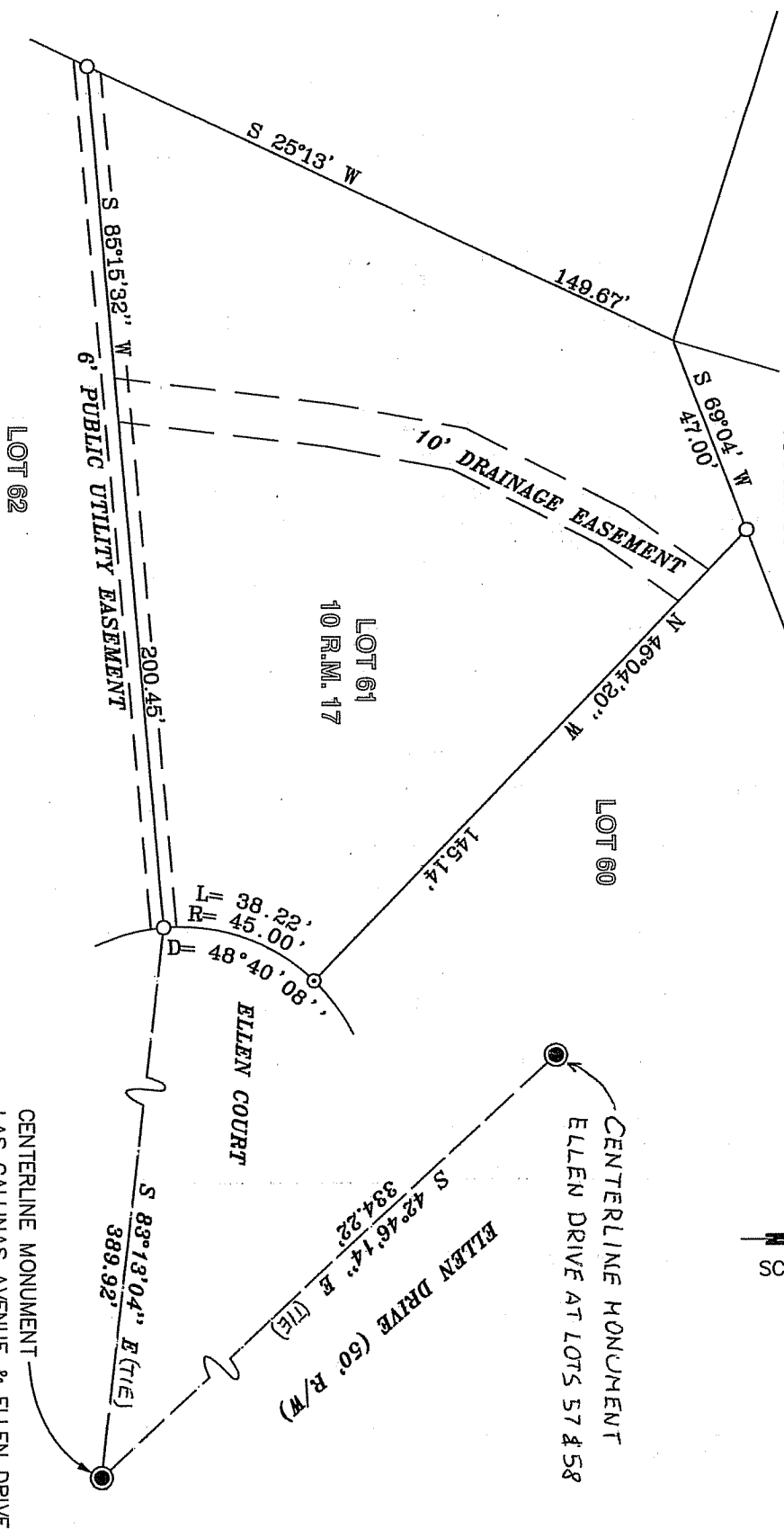
Signed [Signature] Title COUNTY SURVEYOR



County Surveyor's Comment \_\_\_\_\_

PARCEL 3  
18 P.M. 95

PARCEL 2  
18 P.M. 95



**LEGEND**

- FOUND WELL MONUMENT PER 10 R.M. 17
- SET LEAD & BRASS TAG, P.L.S. 7744
- SET 1/2" REBAR WITH PLASTIC CAP, P.L.S. 7744