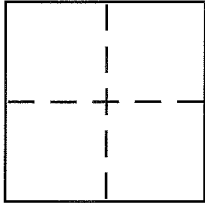


CORNER RECORD

Document Number 164-242-31

City of San Rafael County of Marin, California

Brief Legal Description Lot 13 "Map of Marinwood Unit 6..." "Book 10 Maps Page 17"
APN 164-242-31



CORNER TYPE

Government Corner ☐ Control ☐
Meander ☐ Property ☒
Rancho ☐ Other ☐
Date of Survey 9-15-15

COORDINATES (Optional)

N. _____
E. _____
Zone _____ NAD27 ☐ NAD83 ☐
NAD83 Epoch _____
Elev. _____
Vert. Datum: NGVD29 ☐ NAVD88 ☐
Meas. Units: Metric ☐ Imperial ☐

Corner - Left as found ☒ Found and tagged ☐ Established ☒ Reestablished ☐ Rebuilt ☐

Identification and type of corner found: Evidence used to identify or procedure used to establish or reestablish the corner:

See Page 2 of 2

A description of the physical condition of the monument as found and as set or reset:

See Page 2 of 2

SURVEYOR'S STATEMENT

This Corner Record was prepared by me or under my direction in conformance with the Land Surveyor's Act on October 20 2015

Signed Jeffrey G. Dillberg P.L.S. or R.C.E. No. L 6936



COUNTY SURVEYOR'S STATEMENT

This Corner Record was received SEPTEMBER 21, 2015

and examined and filed OCTOBER 28, 2015

Signed Richard G. Simonitch P.L.S. or R.C.E. No. 7821

Title County Surveyor



County Surveyor's Comment _____

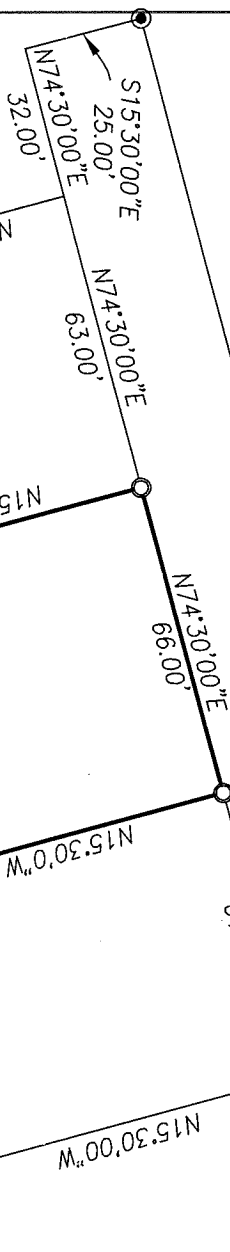
LEGEND

Found Street monument Per R1
 Set .5" Rebar and Cap PLS 6936
 Record
 Measured
 Book 6 RM Page 17, M.C.R.
 R1
 Marin County Records
 M.C.R.

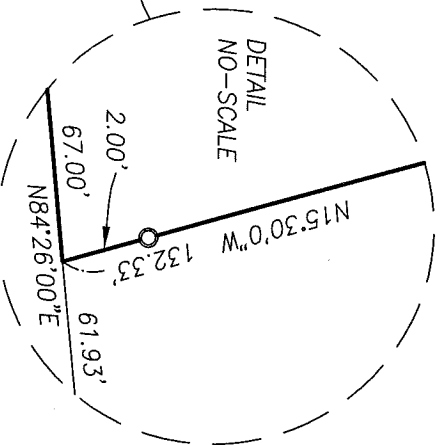
ELVIA COURT

372.00' R & M

N74°30'00"E Basis of Bearings



SCALE: 1 inch = 40 Feet



Prepared By:
 Jeffrey Dillberg, PLS
 Horizon Land Surveys, Inc.
 2436 Carriage Place, Napa, CA 94558
 707 321 5723 jeffdillberg@gmail.com
 September, 2015 - Job# 15097