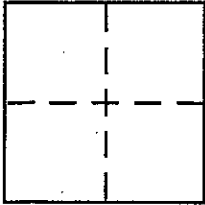


CORNER RECORDDocument Number 99-003204City of SAN RAFAELCounty of MARIN, CaliforniaBrief Legal Description LOT 513 9-RM-12**CORNER TYPE**

Government Corner ☐ Control ☐
 Meander ☐ Property ☒
 Rancho ☐ Other ☐
 Date of Survey 8/2/2001

COORDINATES (Optional)

N. _____
 E. _____
 Zone _____ NAD27 ☐ NAD83 ☐
 NAD83 Epoch _____
 Elev. _____
 Vert. Datum: NGVD29 ☐ NAVD88 ☐
 Meas. Units: Metric ☐ Imperial ☐

Corner - Left as found ☐ Found and tagged ☐ Established ☐ Reestablished ☐ Rebuilt ☐

Identification and type of corner found: Evidence used to identify or procedure used to establish or reestablish the corner:

— SEE OVER —

A description of the physical condition of the monument as found and as set or reset: _____

SURVEYOR'S STATEMENT

This Corner Record was prepared by me or under my direction in conformance with the Land Surveyor's Act on 8/4/2001

Signed William E. Schroeder P.L.S. or R.C.E. No. 5814

COUNTY SURVEYOR'S STATEMENT

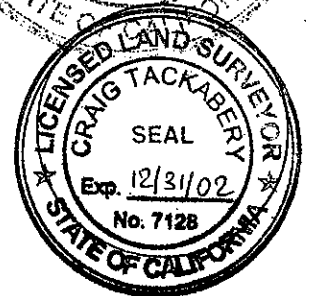
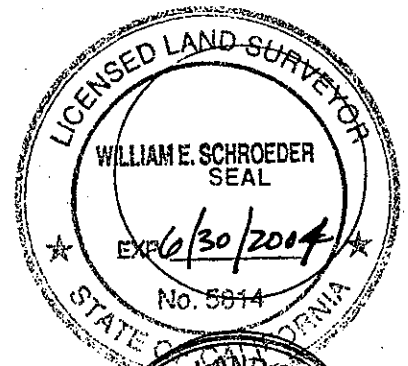
This Corner Record was received 10-1-2001

and examined and filed _____

Signed Craig Tackabery P.L.S. or R.C.E. No. 7128

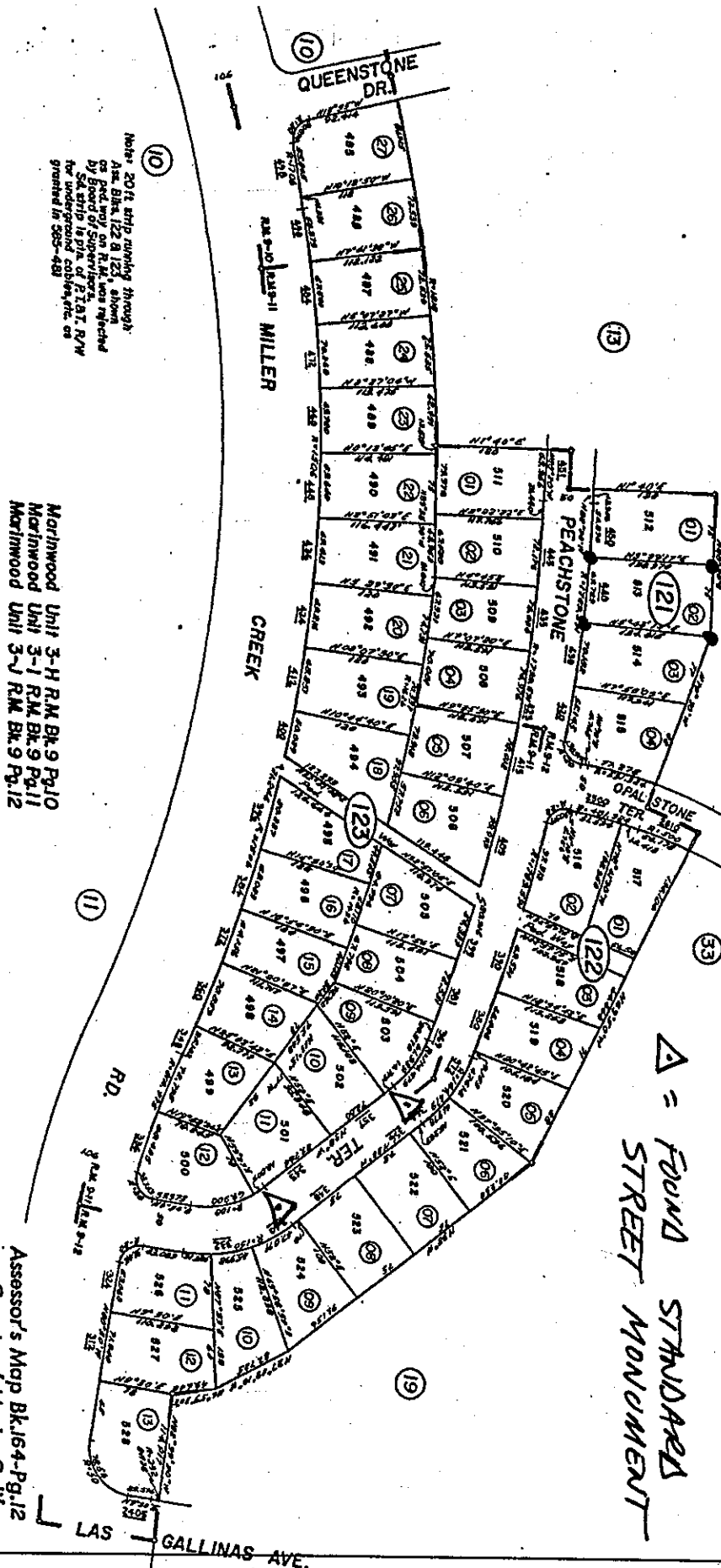
Title DEPUTY

County Surveyor's Comment _____



164-12

Δ = FOUND STANDARD
STREET MONUMENT



Note: 20 ft ship running through
Ast. Bkrs. 122 & 123, shown
as pod wry on R/W, was rejected
by Board of Supervisors.
Sd ship is pile of P.L.A.T. R/W
for underground cables, etc. as
granted in 585-481

Marlinwood Unit 3-H R.M. Bk. 9 Pg. 10
Marlinwood Unit 3-1 R.M. Bk. 9 Pg. 11
Marlinwood Unit 3-J R.M. Bk. 9 Pg. 12

NOTE—Aspen's Block Numbers Shown in Ellipses, Aspen's Parcel Numbers Shown in Circles.

Assessor's Map Bk.164-Pg.12
County of Marin, Calif.