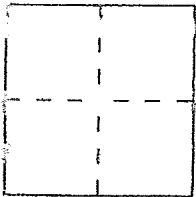


CORNER RECORD

Document Number: 164-092-16

City of San Rafael County of Marin, California

Brief Legal Description Lot 555 of 9 Rm 27



CORNER TYPE

Government Corner ☐ Control ☐
 Meander ☐ Property ☒
 Rancho ☐ Other ☐
 Date of Survey _____

COORDINATES (Optional)

N. _____
 E. _____
 Zone _____ Datum _____
 Elev. _____

Corner — Left as found ☐ Found and tagged ☐ Established ☒ Reestablished ☐ Rebuilt ☐

Identification and type of corner found: Evidence used to identify or procedure used to establish or reestablish the corner:

Fd. Standard Street Monuments in
Loganberry Drive per 9 Rm 27

A description of the physical condition of the monument as found and as set or reset:

Set 1/2" Iron bar at boundary corner and
set nail + brass tag LS 5290 on boundary
line (see sketch map - over)

SURVEYOR'S STATEMENT

This Corner Record was prepared by me or under my direction in conformance with
 the Land Surveyors' Act on June 6th 2016

Signed David Wray L.S. or R.C.E. Number LS 5290



COUNTY SURVEYOR'S STATEMENT

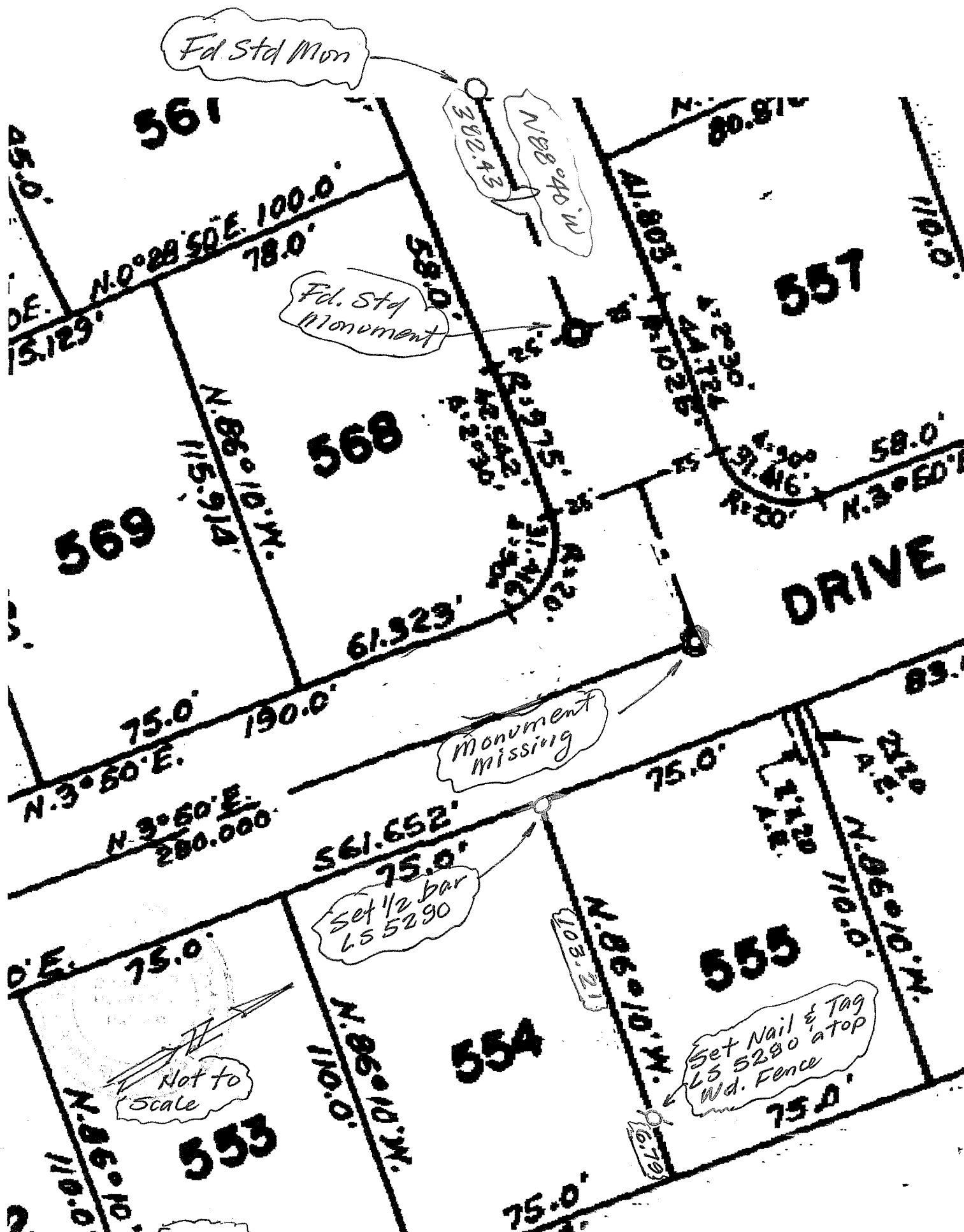
This Corner Record was received JUNE 13, 2016 and examined

and filed SEPTEMBER 23, 2016

Signed R. G. Simonitch Title County Surveyor



County Surveyor's Comment _____



Indicates Information added by this surveyor