

CORNER RECORD

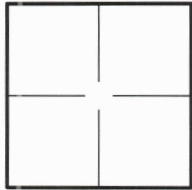
Agency Index CR22-125
Document Number 164-034-01

City of SAN RAFAEL County of MARIN, California

Brief Legal Description LOT 743 OF "MAP OF MARINWOOD UNIT 5-B" - 9 MAPS 48 - APN: 164-034-01

CORNER TYPE

COORDINATES (Optional)



Government Corner ☐ Control ☐
Meander ☐ Property ☒
Rancho ☐ Other ☐

Date of Survey 07/21/2022

N. E.

Elevation

Units ☒ Metric ☐ U.S. Survey Foot ☒

Horizontal Datum

Zone Epoch Date

Vertical Datum

☐ Complies with Public Resources Code §§8801-8819

☐ Complies with Public Resources Code §§88900-8902

PLS Act Ref.: ☒ 8765(d) ☐ 8771 ☐ 8773 ☐ Other:

Corner/Monument: ☐ Left as found ☒ Established ☐ Rebuilt ☐ Pre-Construction

☐ Found and tagged ☐ Reestablished ☐ Referenced ☐ Post-Construction

Narrative of corner identified and monument as found, set, reset, replaced, or removed:

☒ See sheet #2 for description(s):

FOUND (2) LEAD PIN IN 6" CONCRETE CYLINDER PER 9 RM 47

FOUND (2) LEAD PIN IN 6" CONCRETE CYLINDER PER 9 RM 48

SET (3) 3/4" IRON PIPE TAGGED "LS 7539"

SET (1) TACK & TAG IN WALL FOOTING TAGGED "LS 7539"

SURVEYOR'S STATEMENT

This Corner Record was prepared by me or under my direction in conformance with

the Professional Land Surveyor's Act on September 26, 2022

Signed [Signature] P.L.S. or R.C.E. No. LS 7539



COUNTY SURVEYOR'S STATEMENT

This Corner Record was received September 26, 2022

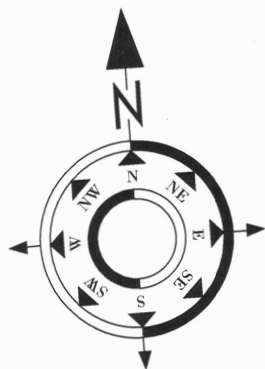
and examined and filed September 26, 2022

Signed T.W. Park P.L.S. [Redacted] No. 8176

Title County Surveyor

County Surveyor's Comment:





GRAPHIC SCALE



(IN FEET)

1 inch = 60 ft.

LEGEND:

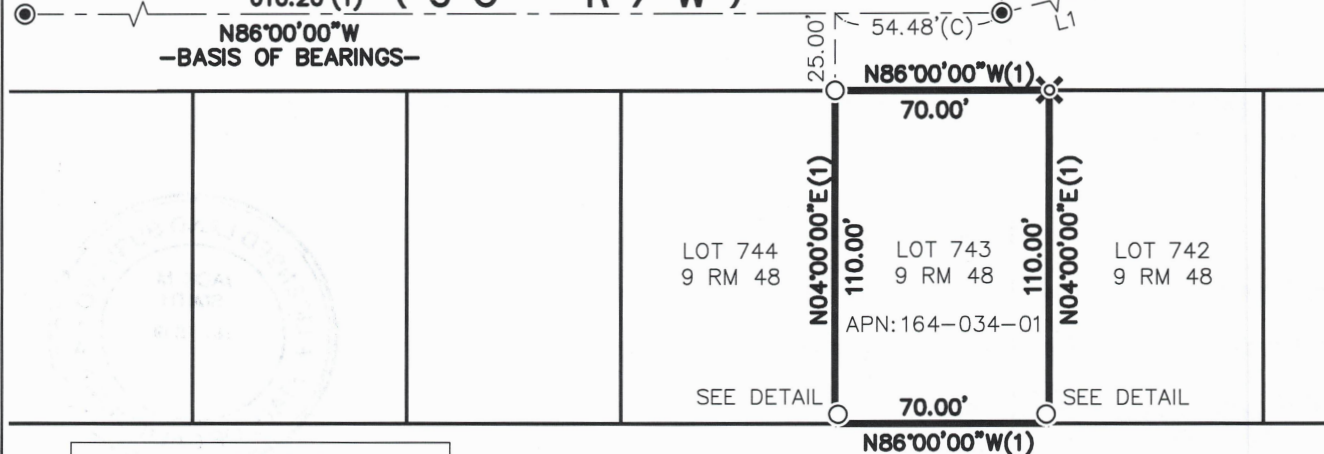
- FOUND LEAD PIN IN 6" CONCRETE CYLINDER PER 9 RM 47
- ⊙ FOUND LEAD PIN IN 6" CONCRETE CYLINDER PER 9 RM 48
- SET 3/4" IRON PIPE TAGGED "LS 7539"
- ⊗ SET TACK & TAG IN WALL FOOTING TAGGED "LS 7539"
- (C) CALCULATED

- INDICATES BOUNDARY LINE
- INDICATES LOT LINE
- - - - - INDICATES CENTERLINE

ELDERBERRY LANE
(50' R/W)

APPLEBERRY DRIVE

610.20'(1) (50' R/W)

N86°00'00"W
-BASIS OF BEARINGS-APPLEBERRY DRIVE
L2

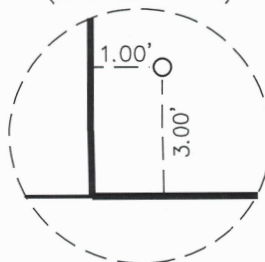
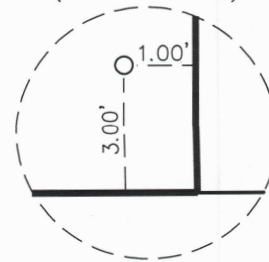
LINE TABLE

NO.	LENGTH	DIRECTION
L1	725.10'(C)	N80°03'09"E(C)
L2	421.23'(C)	N56°15'00"E(2)

REFERENCE:

- (1) "MAP OF MARINWOOD UNIT 5-B" FILED FOR RECORD AUGUST 23, 1956 IN VOLUME 9 OF MAPS AT PAGE 48, OFFICIAL RECORDS OF MARIN COUNTY.
- (2) "MAP OF MARINWOOD UNIT 5-A" FILED FOR RECORD AUGUST 23, 1956 IN VOLUME 9 OF MAPS AT PAGE 47, OFFICIAL RECORDS OF MARIN COUNTY.

LUCAS VALLEY ROAD

DETAIL
(NOT TO SCALE)DETAIL
(NOT TO SCALE)

DRAWN BY: WC

JOB NO. 6983-01