

CORNER RECORD

Assessor's Parcel No. 164-012-04

County of Marin California

Brief Legal Description: Lot 878, 9 RM 54 Marin County Records

CORNER TYPE**COORDINATES**
(Optional)

Lot in Existing Subdivision

None

Corners - None found. Re-established front corners based on street monuments shown on 9 Maps 54.
Set two front property corner monuments as shown on this Corner Record.

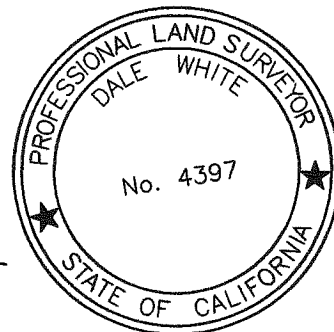
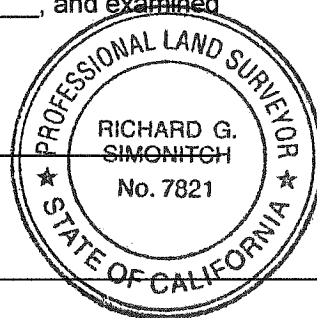
Description of Monuments reset: See Page 2.

SURVEYOR'S STATEMENT

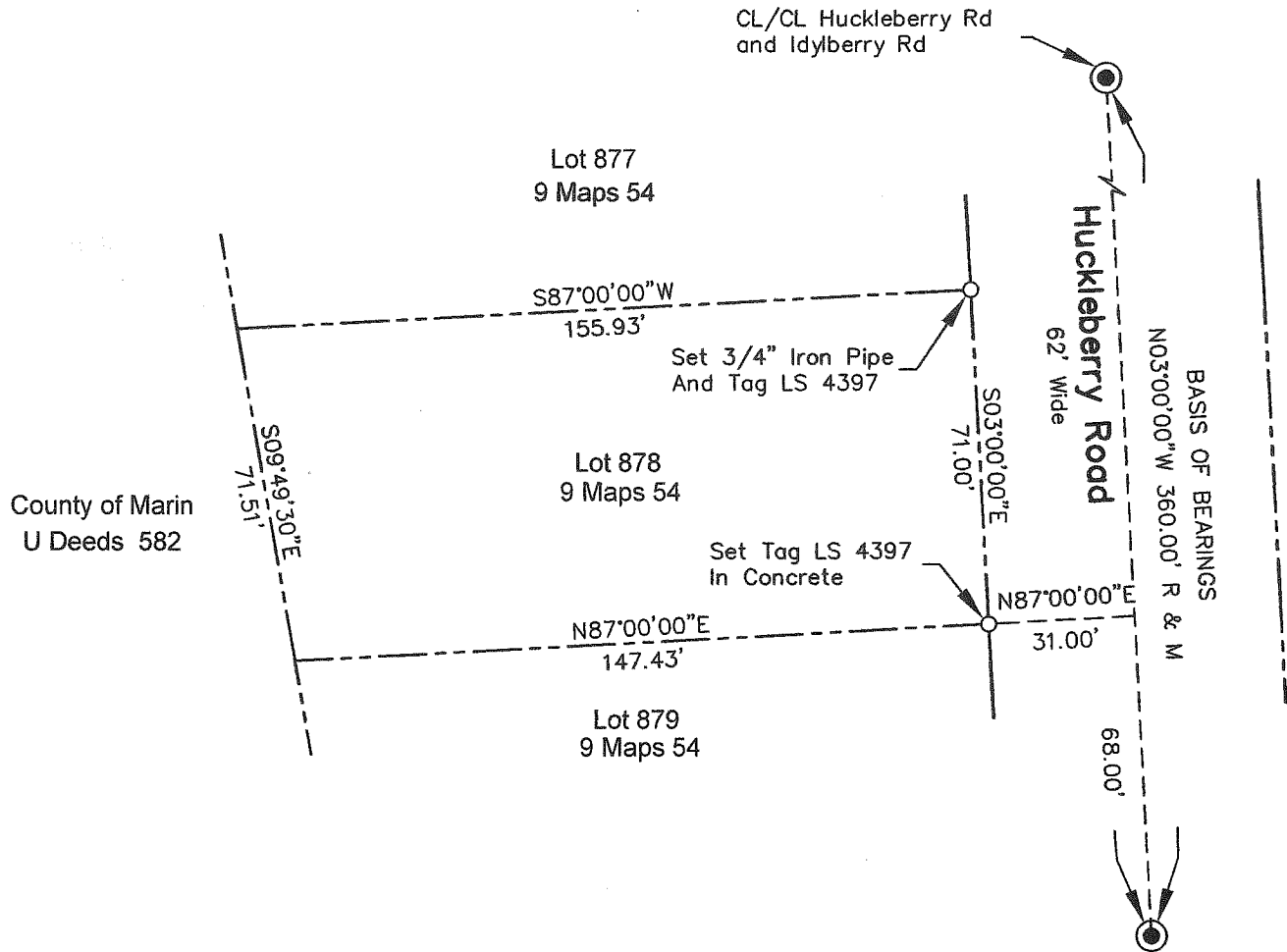
This Corner Record was prepared by me or under my direction in
conformance with the Land Surveyor's Act on August 18, 2014.

Signed Dale White LS 4397

9-25-14

**COUNTY SURVEYOR'S STATEMENT**This Corner Record was received 07-28, 20 14, and examinedand filed OCTOBER 15, 20 14.Signed Richard G. Simonitch Title DEPUTYCounty Surveyor's Comments _____

_____**Corner Record**



Legend

- Property Line
- Fd. Street Monument
Per 9 RM 54
- Set Monument
As Noted



Scale: 1" = 40'

2077 Huckleberry Road
San Rafael, CA
APN 164-012-04

Corner Record

Page 2 of 2

Property Survey
Lot 878 9 RM 54
Marin County Records