

CORNER RECORD

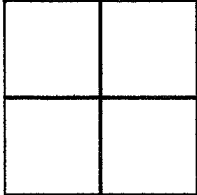
Agency Index DPW#19-053
Document Number 160-940-06
County of Marin, California

City of Novato

Brief Legal Description Portion of lot 321 of 2003 RM 180.

CORNER TYPE

COORDINATES (Optional)



Government Corner Control
Meander Property
Rancho Other

N. _____ E. _____
 Elevation _____
 Units Metric U.S. Survey Foot
 Horizontal Datum _____
Zone _____ Epoch Date _____
Vertical Datum _____

Date of Survey May 10, 2019

Complies with Public Resources Code §§8801-8819
 Complies with Public Resources Code §§8890-8902

PLS Act Ref: 8765(d) 8771 8773 Other:
Corner/Monument: Left as found Established Rebuilt Pre-Construction
 Found and tagged Reestablished Referenced Post-Construction

Narrative of corner identified and monument as found, set, reset, replaced, or removed:
 See sheet #2 for description (s):

SURVEYOR'S STATEMENT

This Corner Record was prepared by me or under my direction in conformance with the Professional Land Surveyors' Act on May 14, 2019

Signed [Signature] P.L.S. or R.C.E. No. 6649



COUNTY SURVEYOR'S STATEMENT

This Corner Record was received MAY 31, 2019
and examined and filed AUG. 20, 2019

Signed [Signature] P.L.S. or R.C.E. No. 9292
Title DEPUTY C.S.



County Surveyor's Comment _____

All distances shown are in feet and decimals thereof

GRAPHIC SCALE



(IN FEET)

References

(1) 2003 RM 180

LEGEND

Found Street Monument, 2" Brass Disc in Concrete, Punched & Stamped PLS"3303"

Set Mag Nail & Brass Washer in Concrete Sidewalk, Stamped "LA STEVENS PLS 6649"

Set 5/8" Rebar & Punched Aluminum Cap, Stamped "LA STEVENS PLS 6649"

Calc Calculated Per Record Map

Wood Fence

N.T.S. Not To Scale

(R) Radial Bearing

(T) Total

S.N.F. Searched Not Found



LOT 322

LANDS LEOGRANDIS
I.N. 2004-0108884

2003-RM-180
LOT 321

LANDS OF
LEVINE
(I.N. 2018-0022756)

68.32'(T)
N49°36'23"W (T)
2.8' N.T.S.
S.N.F.
49.51'(T)
N54°45'58"W (T)

R=40.00'(T)
Δ=29°59'15"(T)
L=20.94'(T)

S.N.F.
S84°45'13"E (R)
64.53'(T)

1' Cinder-block Wall

75.02'(T)
N43°19'18"E (T)
1.0' N.T.S.

LOT 320

LANDS OF
SCATENA
I.N. 2017-0012703

40.00'(T)
S34°37'47"E
Basis of Bearings
(95.82)calc
95.63'
SILVERBERRY COURT
(40' R/W) 1
10' Public Utility and Sidewalk Easement



5-14-2019

Corner Record
Lands of Levine

(Lot 321, 2003 map 180)

Novato Marin County California
Scale: 1" = 20' May 2019

L.A. Stevens & Associates, Inc.

Professional Land Surveyors * (415) 382-7713
7 Commercial Blvd., Suite 1 * Novato, CA 94949

Lawrence A. Stevens, PLS 6649

Copyright © Lawrence A. Stevens 2018

Job # 191945

All distances shown are in feet and decimals thereof

GRAPHIC SCALE



(IN FEET)

References

() 1 2003 RM 180

LEGEND

- ⊙ Found Street Monument, 2" Brass Disc in Concrete, Punched & Stamped PLS "3303"
- Set Mag Nail & Brass Washer in Concrete Sidewalk, Stamped "LA STEVENS PLS 6649"
- Set 5/8" Rebar & Punched Aluminum Cap, Stamped "LA STEVENS PLS 6649"

Calc Calculated Per Record Map

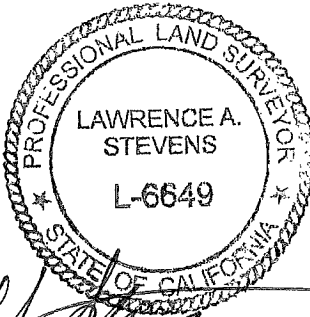
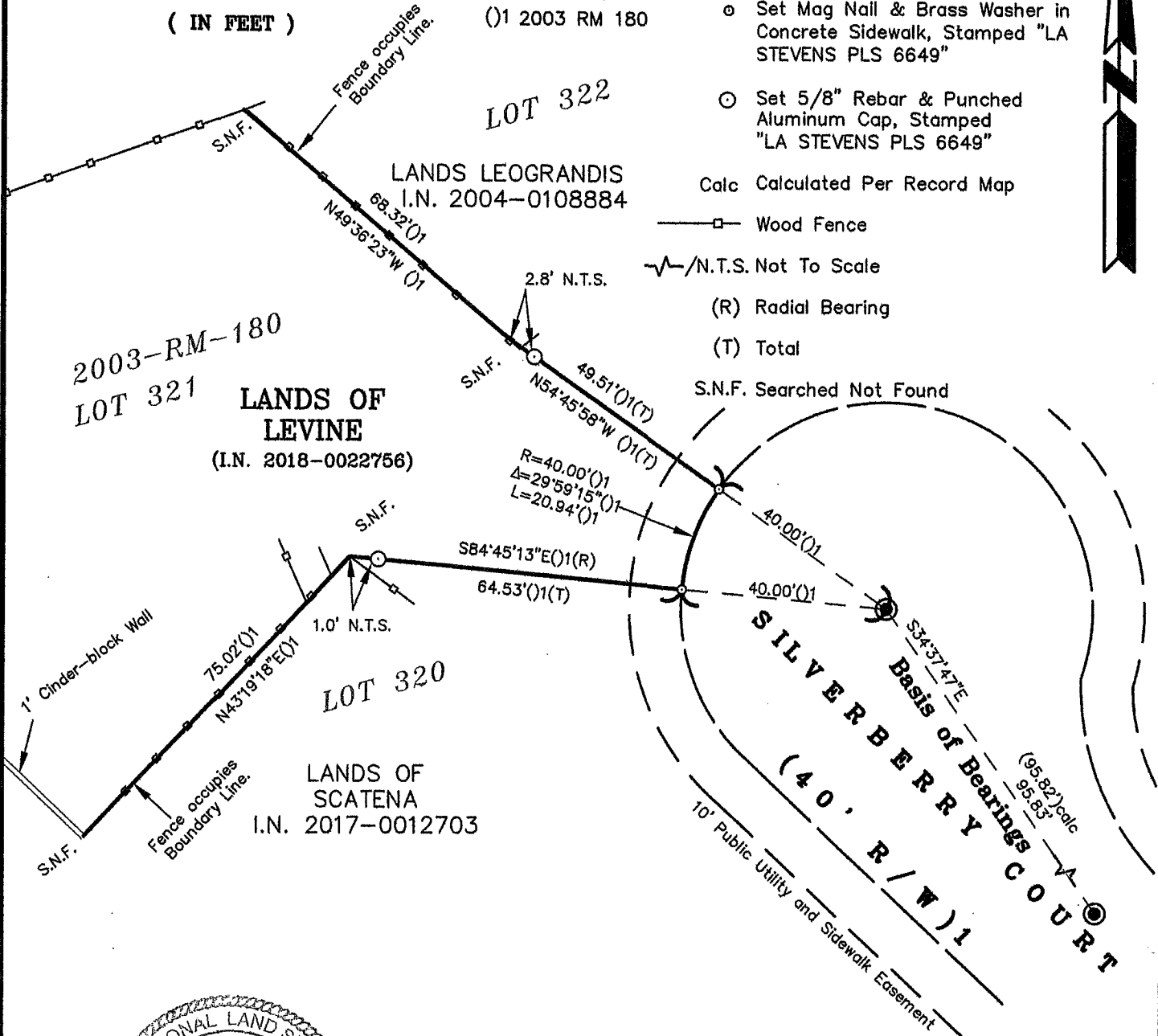
—□— Wood Fence

—/—/ N.T.S. Not To Scale

(R) Radial Bearing

(T) Total

S.N.F. Searched Not Found



5-14-2019

**Corner Record
Lands of Levine**

(Lot 321, 2003 map 180)

Novato Marin County California
Scale: 1" = 20' May 2019

L.A. Stevens & Associates, Inc.

Professional Land Surveyors * (415) 382-7713
7 Commercial Blvd., Suite 1 * Novato, CA 94949

Job # 191945

Lawrence A. Stevens, PLS 6649

Copyright © Lawrence A. Stevens 2018