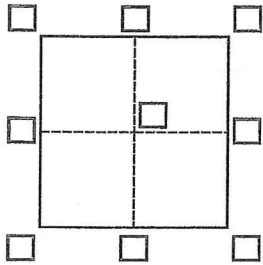


# CORNER RECORD

Agency Index 18-034  
Document Number 160-833-12

City of NOVATO County of MARIN, California  
Brief Legal Description LOT 259 AS SHOWN ON MAP 21 RM 4 MARIN COUNTY RECORDS



### CORNER TYPE

Government Corner  Control   
Meander  Property   
Rancho  Other

Date of Survey March 12, 2018

### COORDINATES (Optional)

N. \_\_\_\_\_ E. \_\_\_\_\_  
Elevation \_\_\_\_\_  
Units Metric  U.S. Survey Foot   
Horizontal Datum \_\_\_\_\_  
Zone \_\_\_\_\_ Epoch Date \_\_\_\_\_  
Vertical Datum \_\_\_\_\_  
 Complies with Public Resources Code §§8801-8819  
 Complies with Public Resources Code §§8890-8902

PLS Act Ref.:  8765(d)  8771  8773  Other:  
Corner/Monument:  Left as found  Established  Rebuilt  Pre-Construction  
 Found and tagged  Reestablished  Referenced  Post-Construction

Narrative of corner identified and monument as found, set, reset, replaced, or removed:  
 See sheet #2 for description(s):

Found Well Monuments, nail with tag, and 3/4 iron pipe as shown on Book 21 of Maps at Pages 4, filed in the office of the County Recorder, Marin County. Set 3/4" Iron Pipe with plastic cap PLS 8948 at the corners of lot 259 as shown on map (Page 2).

### SURVEYOR'S STATEMENT

This Corner Record was prepared by me or under my direction in conformance with the Professional Land Surveyors' Act on March 30, 2018

Signed [Signature] P.L.S. or R.C.E. No. 8948



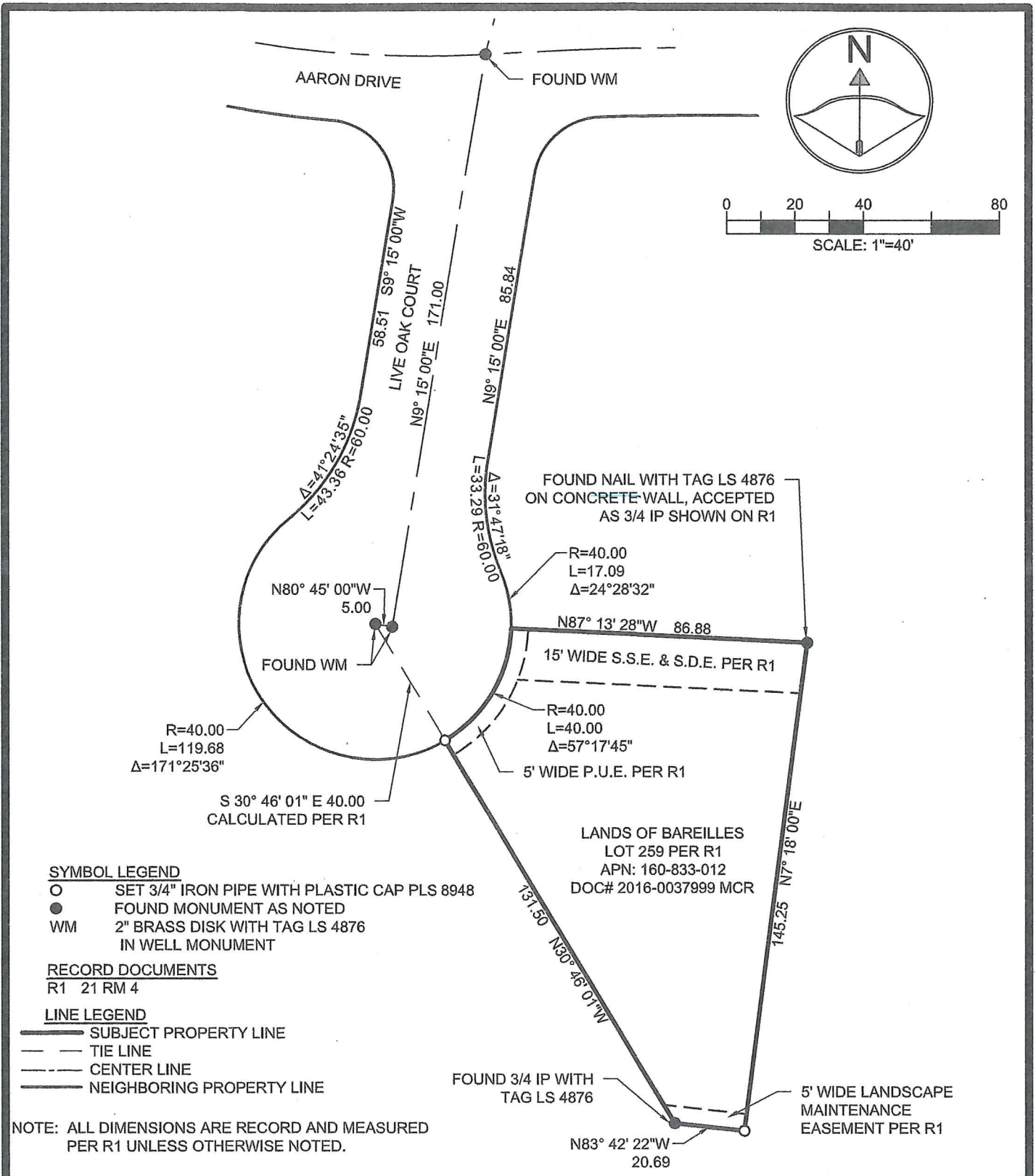
### COUNTY SURVEYOR'S STATEMENT

This Corner Record was received MAY 23, 2018  
and examined and filed OCT. 15, 2018

Signed [Signature] P.L.S. or R.C.E. No. 9292  
Title DEPUTY C.S.

County Surveyor's Comment





CORNER RECORD MAP

PROJECT INFO:

BAREILLES PROPERTY  
5 LIVE OAK COURT  
NOVATO, CA 94949  
APN: 160-833-012

PREPARED BY:

CAMERON PRIDMORE PE, PLS  
1607 CAPELL VALLEY ROAD  
NAPA, CA 94558  
(707) 815-0988

