

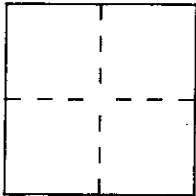
CORNER RECORD

Document Number A.P. # 160-680-12

City of NOVATO

County of MARIN, California

Brief Legal Description LOT 72 OF MARIN COUNTRY CLUB ESTATES, UNIT 2



CORNER TYPE

Government Corner Control
Meander Property
Rancho Other
Date of Survey _____

**COORDINATES
(Optional)**

N. _____
E. _____
Zone _____ Datum _____
Elev. _____

Corner — Left as found Found and tagged Established Reestablished Rebuilt

Identification and type of corner found: Evidence used to identify or procedure used to establish or reestablish the corner:
EXISTING & MONUMENTS FOUND IN THUNDERBIRD DRIVE, ALONG WITH
RECORD MAP IN BOOK 19, PAGE 58, TITLED
"MARIN COUNTRY CLUB ESTATES, UNIT TWO"

A description of the physical condition of the monument as found and as set or reset:
EXISTING & MONUMENTS FOUND, NO PROPERTY
CORNERS FOUND. SET ^{PROP.} CORNERS AND P.O.L.'s
AS SHOWN.

SURVEYOR'S STATEMENT

This Corner Record was prepared by me or under my direction in conformance with the Land Surveyors' Act on 6-22 19 95.

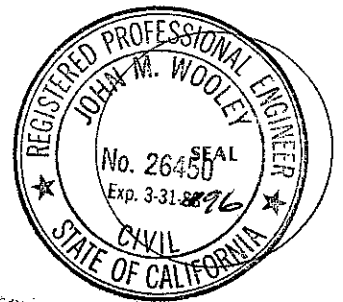
Signed [Signature] L.S. or R.C.E. Number 30465 RCE



COUNTY SURVEYOR'S STATEMENT

This Corner Record was received 6-22 19 95 and examined and filed 6-27 19 95.

Signed [Signature] Title Deputy

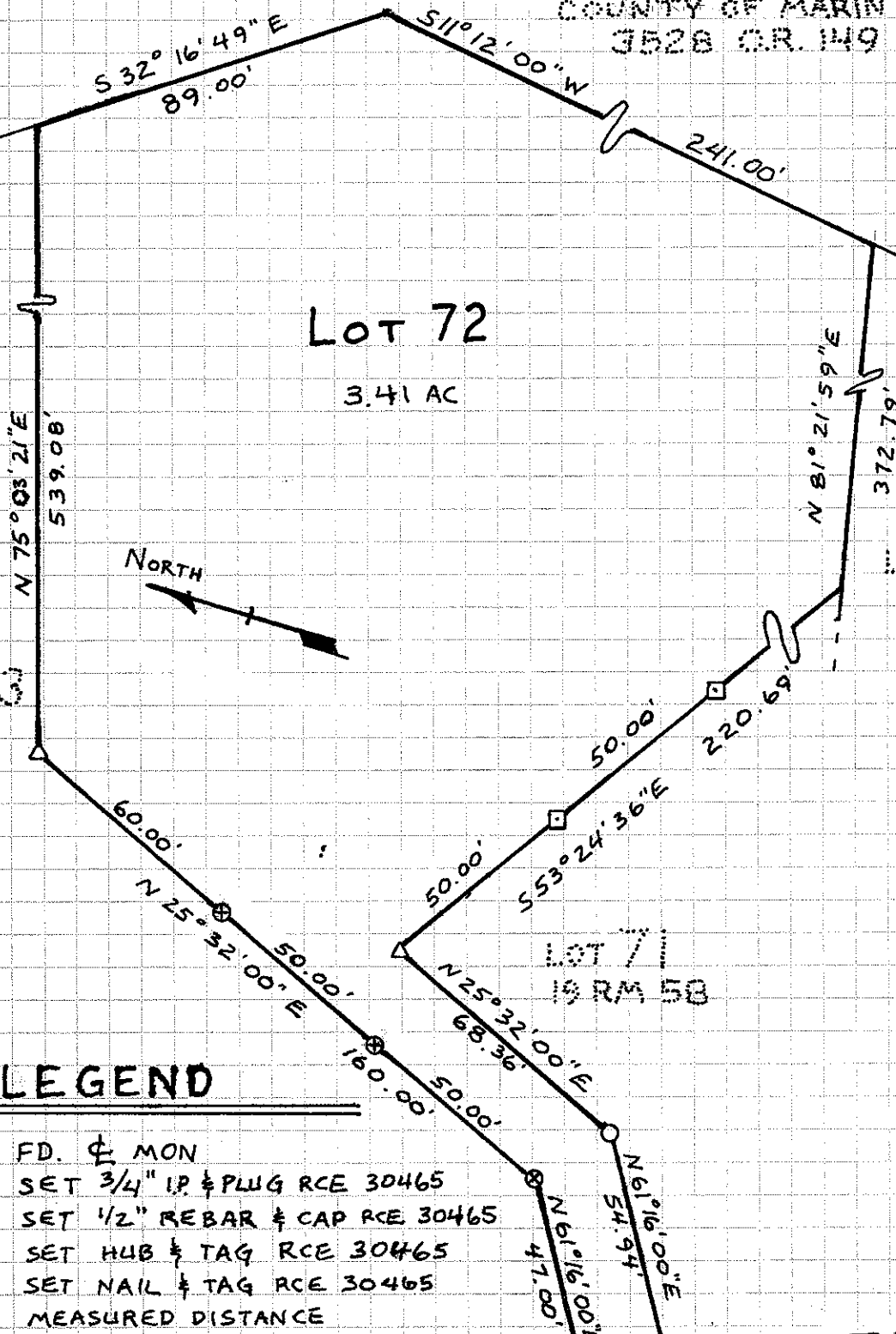


County Surveyor's Comment _____

COUNTY OF MARIN
3528 C.R. 149

LOT 72

3.41 AC



LEGEND

- FD. ♀ MON
- SET 3/4" IP & PLUG RCE 30465
- △ SET 1/2" REBAR & CAP RCE 30465
- SET HUB & TAG RCE 30465
- ⊗ SET NAIL & TAG RCE 30465
- M MEASURED DISTANCE
- R RECORD DISTANCE