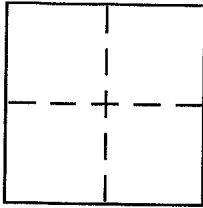


CORNER RECORD

Document Number 140-652-04
City of NOVATO County of MARIN, California

Brief Legal Description LOT 131, HILLSIDE PARK, Unit 3, 18 RM 62



CORNER TYPE

Government Corner Control
Meander Property
Rancho Other
Date of Survey Oct 14, 2004

COORDINATES (Optional)

N. _____
E. _____
Zone _____ NAD27 NAD83
NAD83 Epoch _____
Elev. _____
Vert. Datum: NGVD29 NAVD88
Meas. Units: Metric Imperial

Corner - Left as found Found and tagged Established Reestablished Rebuilt

Identification and type of corner found: Evidence used to identify or procedure used to establish or reestablish the corner:

Re-establish the exterior boundary of Lot 131, MAP of Hillside Park, Unit 3, 18 RM 62 from existing street monuments per said map on BECKY LANE. Refer to sketch on reverse side for details.

A description of the physical condition of the monument as found and as set or reset:

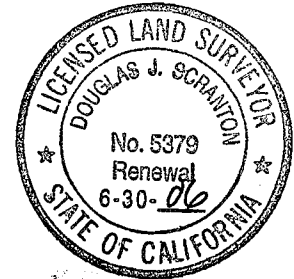
At Lot corners set 1/2" rebar with PLS CAP 5379 Affixed to top & driven flush with surrounding grade. MISC. RANDOMLY SPACED LINE POINTS SET 60 @ NAIL (unless noted otherwise per sketch on reverse side

SURVEYOR'S STATEMENT

This Corner Record was prepared by me or under my direction in conformance with

the Land Surveyor's Act of October 19 2004

Signed [Signature] P.L.S or R.C.E. No. PLS 5379



COUNTY SURVEYOR'S STATEMENT

This Corner Record was received OCTOBER 26, 2004

and examined and filed NOVEMBER 17, 2004

Signed [Signature] P.L.S or R.C.E. No. 7128

Title COUNTY SURVEYOR

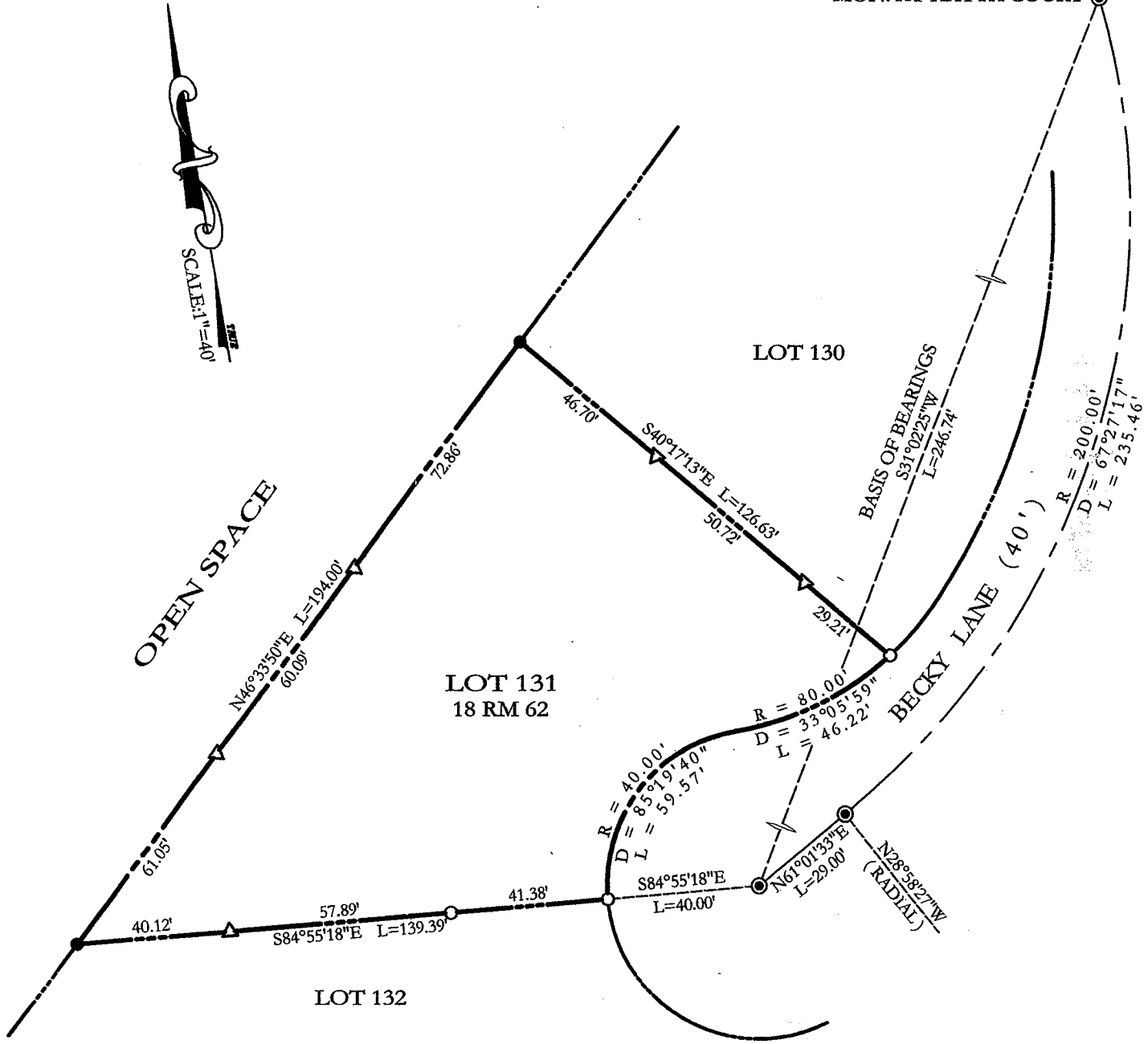


County Surveyor's Comment _____

Prepared by
DO SCRANTON SURVEYING
NOVATO CA

MON. AT KATYA COURT

SCALE: 1"=40'



ALL DISTANCES GIVEN IN FEET AND DECIMALS THEREOF
NO EASEMENTS ARE DEPICTED

LEGEND

- SET 1/2" REBAR/PLS 5379
- FOUND 3/4" IRON PIPE TAG JS 5316
- △ SET NAIL ON PROPERTY LINE

BASIS OF BEARINGS

TAKEN AS S31°02'25"W BETWEEN MONUMENTS AS SHOWN ON BECKY LANE

MAP OF HILLSIDE PARK UNIT 3

SITUS: APN 160-652-04