

CORNER RECORD

Document Number

160-642-08

City of Novato County of Marin, California

Brief Legal Description Lot 199 as shown in Volume 18 of Maps, at page 62

CORNER TYPE

**COORDINATES
(Optional)**

Government Corner Control North _____
 Meander Property East _____
 Rancho Other Zone _____ Datum _____
 Date of Survey November 16, 2004 Elev. _____

Corner _____ Left as found Found and tagged Established Reestablished Rebuilt

Identification and type of corner found: Evidence used to identify or procedure used to establish or reestablish the corner:

Found 3/4 " Iron Pipe Tagged L.S. 5316 at angle point along northerly line which fit well with calculated position, found curb cut in sidewalk at property line extended which also fit well with calculated position.

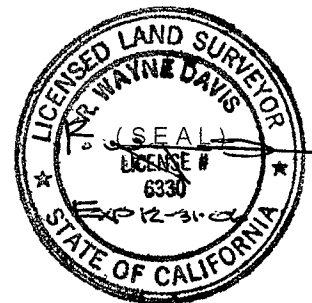
Set 6" ginnies on property line for fence construction. Used Monuments on Clair Court as basis of bearing

A description of the physical condition of the monument as found and as set or reset: _____

SURVEYOR'S STATEMENT

This Corner Record was prepared by me or under my direction in conformance with the Land Surveyors' Act on January 27, 2005

Signed _____ L.S. or R.C.E. Number L.S. 6330

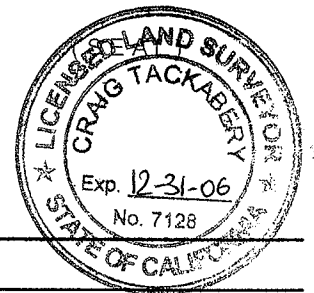


COUNTY SURVEYOR'S STATEMENT

This Corner Record was received FEBRUARY 10, 2005

and examined and filed APRIL 1, 2005

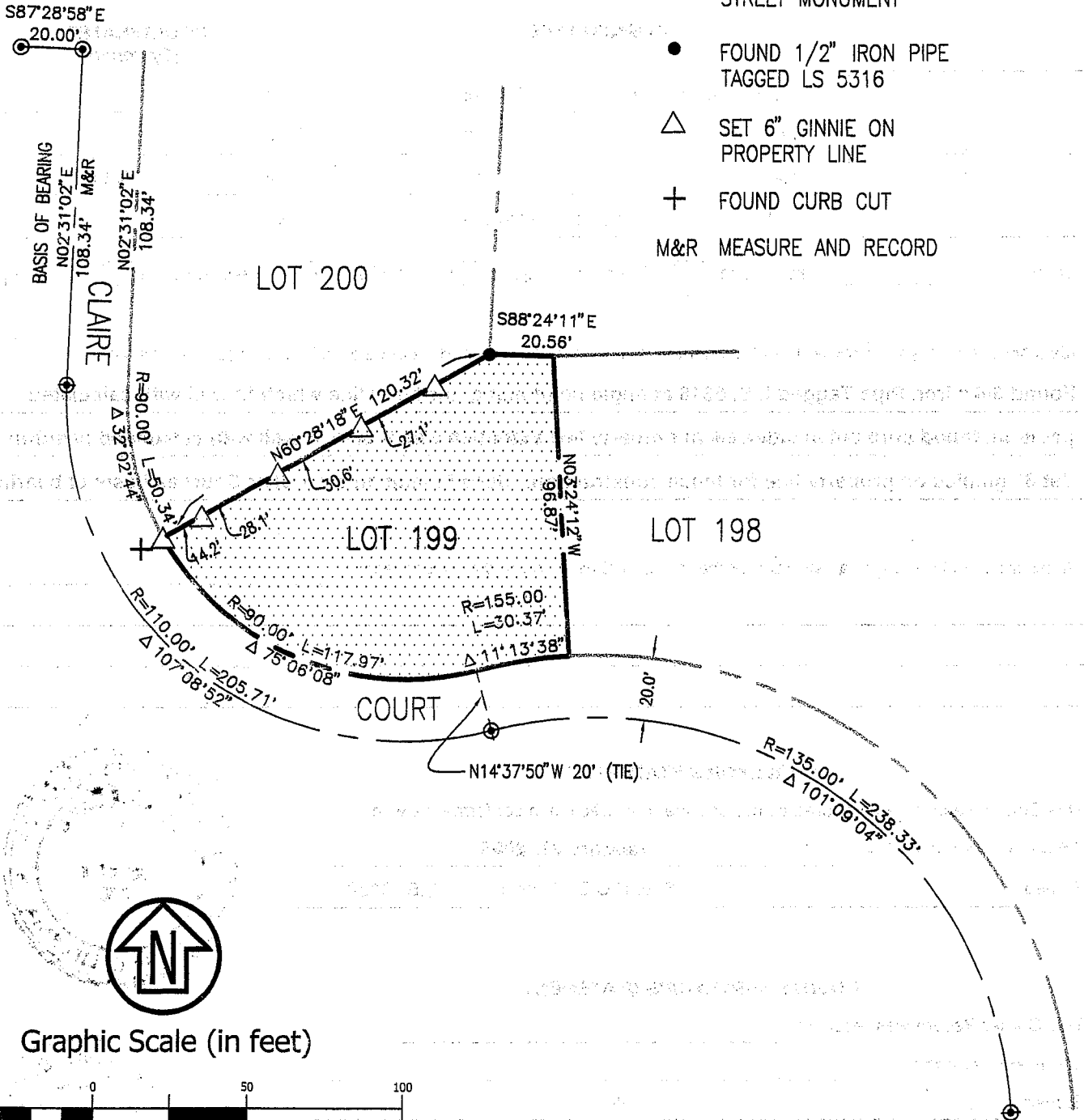
Signed [Signature] Title COUNTY SURVEYOR



County Surveyor's Comment _____

LEGEND:

- ⊙ FOUND STANDARD STREET MONUMENT
- FOUND 1/2" IRON PIPE TAGGED LS 5316
- △ SET 6" GINNIE ON PROPERTY LINE
- + FOUND CURB CUT
- M&R MEASURE AND RECORD



Graphic Scale (in feet)



1 inch = 50 ft.

APN# 160-642-08



R.W. DAVIS & ASSOCIATES
LAND SURVEYORS

790 DeLong Ave.
Suite 2
Novato CA 94945
L.S. 6330
© 2001

Tel. (415) 898-9099
Fax (415) 898-2499
Email:
RWD@CSWST2.COM

REV.

01/12/05
SCALE: 1"=50'

LOT 199
MAP OF HILLSIDE PARK, UNIT 3
VOLUME 18 OF MAPS, PAGE 62

NOVATO MARIN CALIFORNIA