



JERRICO ASSOCIATES

7555

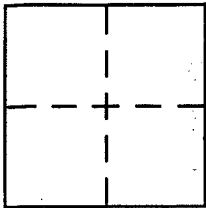
CORNER RECORD

SUITE 27
77 MARK DRIVE
SAN RAFAEL, CA 94903

Document Number 160-631-03

City of Novato County of Marin, California

Brief Legal Description Lot 455 Marin Country Club Estates 18 RM 54



CORNER TYPE

Government Corner Control
 Meander Property
 Rancho Other
 Date of Survey June 28, 2005

COORDINATES (Optional)

N. _____
 E. _____
 Zone _____ NAD27 NAD83
 NAD83 Epoch _____
 Elev. _____
 Vert. Datum: NGVD29 NAVD88
 Meas. Units: Metric Imperial

Corner - Left as found Found and tagged Established Reestablished Rebuilt

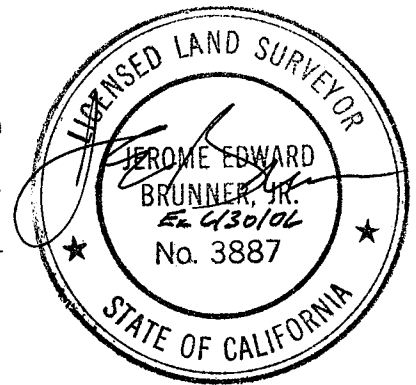
Identification and type of corner found: Evidence used to identify or procedure used to establish or reestablish the corner:
Found standard subdivision monuments at Northerly end of St. Andrews Drive.

A description of the physical condition of the monument as found and as set or reset:
The physical condition of the monuments as found ~~seem to be~~ ^{ARE} in good condition. See map in back.

SURVEYOR'S STATEMENT

This Corner Record was prepared by me or under my direction in conformance with the Land Surveyor's Act on June 28 2005

Signed [Signature] P.L.S or R.C.E. No. LS 3887



COUNTY SURVEYOR'S STATEMENT

This Corner Record was received July 7, 2005

and examined and filed AUGUST 9, 2005

Signed [Signature] P.L.S or R.C.E. No. 7128

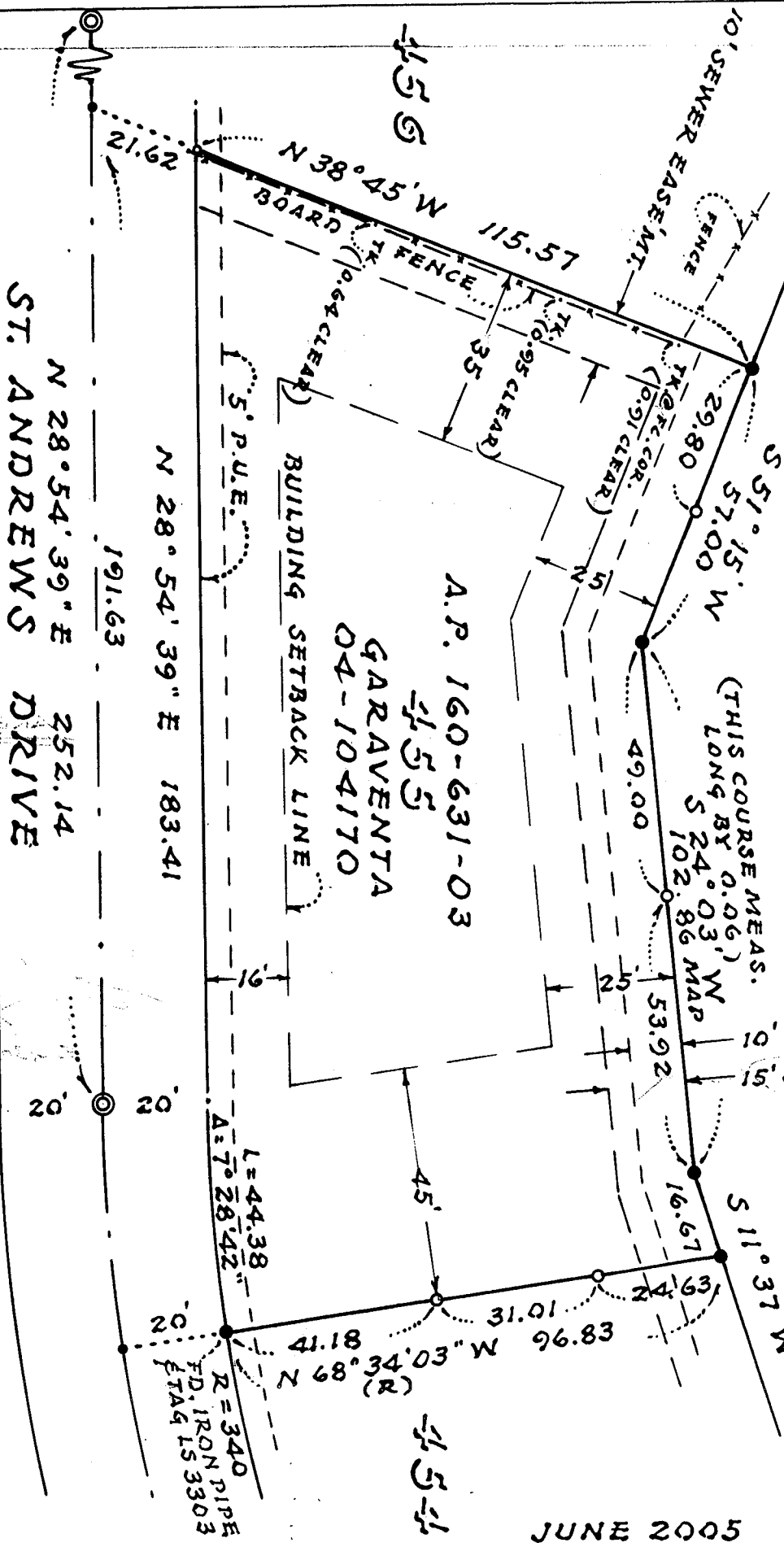
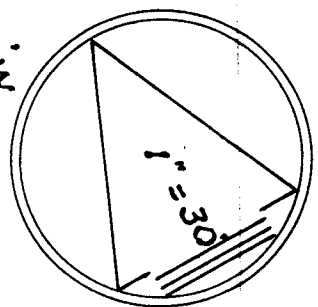
Title COUNTY SURVEYOR

County Surveyor's Comment _____



NOTE: DIMENSIONS ARE IN FEET AND DECIMALS.

- ◎ = STANDARD MONUMENT.
 - = FOUND IRON PIPE & PLUG RCE 18221.
 - = SET #5 REBAR & CAP LS 3887.
 - = SET NAIL & TAG LS 3887 IN & @ P/L PROD.
 - = SET NAIL & TAG @ OUT EDGE OF TOP FC. RUNNER.
 - = SET TACK IN FENCE POST (W'LY SIDE).
- ALL FOUND MONUMENTS & EASEMENTS ARE PER 18 R.M. 54



SURVEY OF LOT 455 MARIN COUNTRY CLUB ESTATES
 18 R.M. 54
 NOVATO CALIFORNIA

JUNE 2005

JERRICO ASSOCIATES 77 MARK DR., SAN RAFAEL, CA.

S - 7555