

CORNER RECORD

COUNTY OF Marin T. 2N(Projected) R. 6W(Projected) MDB MERIDIAN CALIFORNIA

CORNER TYPE: GOV'T. CORNER MEANDER RANCHO CONTROL OTHER
CORNER IDENTIFICATION — DATE OF VISIT July 30, 19 86



Point on line between Lots 34 & 35, Map of Pacheco Creek Subdivision (17RM15)

CORNER — LEFT AS FOUND FOUND AND TAGGED REESTABLISHED OBLITERATED CORNER REBUILT

PHYSICAL DESCRIPTION OF CORNER FOUND, EVIDENCE AND METHOD USED TO IDENTIFY OR REESTABLISH

Found Standard Street Monuments at centerline of Pacheco Creek Drive were used to establish the location of the line between Lots 34 & 35, holding record dimensions per 17RM15 (see sketch below)

PHYSICAL DESCRIPTION OF MONUMENTS REBUILT OR PERPETUATED

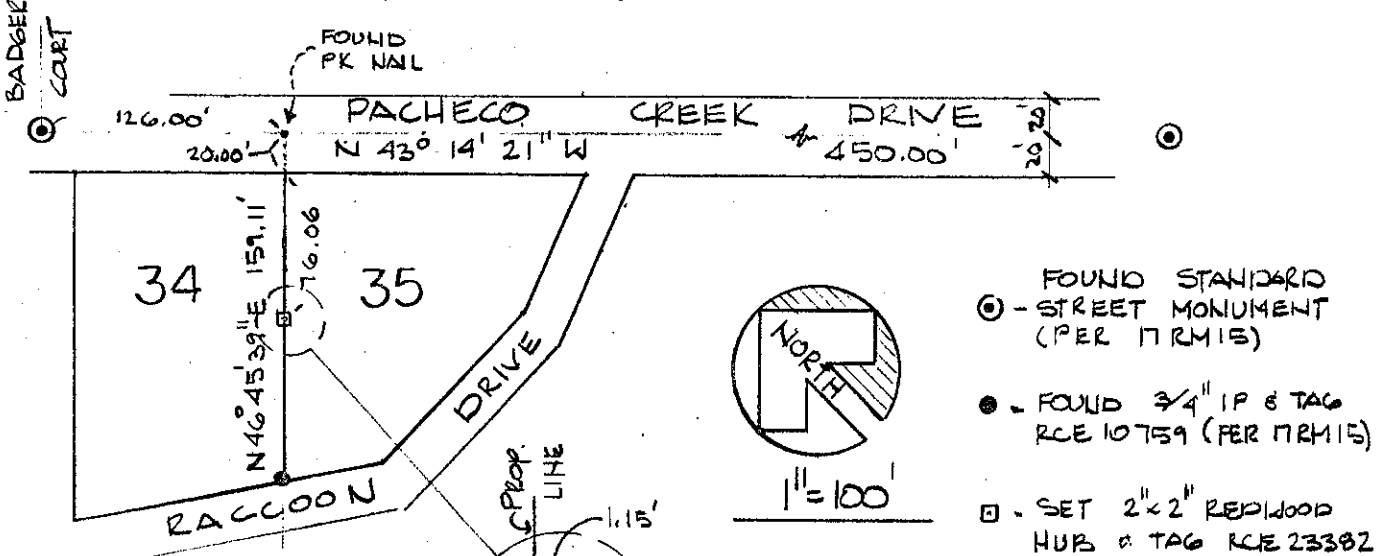
A 2"x2" redwood hub monument was set and tagged RCE23382

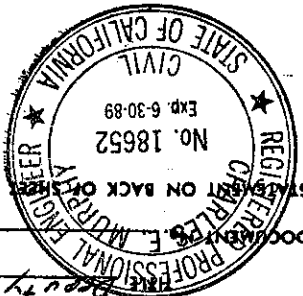
AP# 160-561-34 & 35

CALIFORNIA COORDINATE SYSTEM ORDER: FIRST SECOND THIRD
STATIONS USED: NGS (USC & GS) STATE COUNTY OTHER STATION _____
ZONE _____ ELEVATION _____ NORTHINGS (Y) _____ EASTINGS (X) _____

(Fold)

SKETCH: (Include reference tie or witness points, remarks and topo of area)





YES NO

REGISTERED PROFESSIONAL ENGINEER CHARLES E. MORIARTY
DOCUMENT NO. 23382
STATEMENT ON BACK OF THIS
No. 18652
Exp. 6-30-89
STATE OF CALIFORNIA
CIVIL ENGINEER

SURVEYOR'S CERTIFICATE
THIS CORNER RECORD WAS PREPARED BY ME OR UNDER MY
DIRECTION IN CONFORMANCE WITH THE LAND SURVEYORS ACT
ON August 1 19 86
SIGNED: *[Signature]*
RCE 23382
L.S. or R.C.E. No. 23382

COUNTY SURVEYOR'S CERTIFICATE
THE CORNER RECORD WAS RECEIVED
Aug. 6 19 86
AND EXAMINED AND FILLED
Aug 11 19 86
BY *[Signature]*
County Surveyor

