

CORNER RECORD

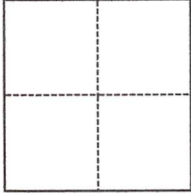
Agency Index DPW#21-076

Document Number APN 160-561-17

City of Novato County of Marin, California

Brief Legal Description Lot 17 of 17 RM 15, Marin County Records

CORNER TYPE



- Government Corner
- Meander
- Rancho
- Control
- Property
- Other

Date of Survey May 20, 2021

COORDINATES (Optional)

N. _____ E. _____

Elevation _____

Units Metric U.S. Survey Foot

Horizontal Datum _____

Zone _____ Epoch Date _____

Vertical Datum _____

Complies with Public Resources Code §§8801-8819

Complies with Public Resources Code §§8890-8902

PLS Act Ref.: 8765(d) 8771 8773 Other:

Corner/Monument: Left as found Established Rebuilt Pre-Construction
 Found and tagged Reestablished Referenced Post-Construction

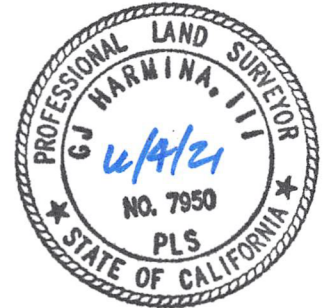
Narrative of corner identified and monument as found, set, reset, replaced, or removed:

See sheet #2 for description(s):

Found and held centerline monuments per map. Found iron pipes at rear corners in good condition. Set southwest corner, brass nail & tag, at flowline in concrete curb. Southeast corner falls in utility box, nothing set; found chiseled line in top of curb on lot line extended. Set rebar & yellow cap on each side line at grade change, as shown on sheet 2.

SURVEYOR'S STATEMENT

This Corner Record was prepared by me or under my direction in conformance with the Professional Land Surveyors' Act on May 21, 2021.
 Signed [Signature] P.L.S. or R.C.E. No. 7950



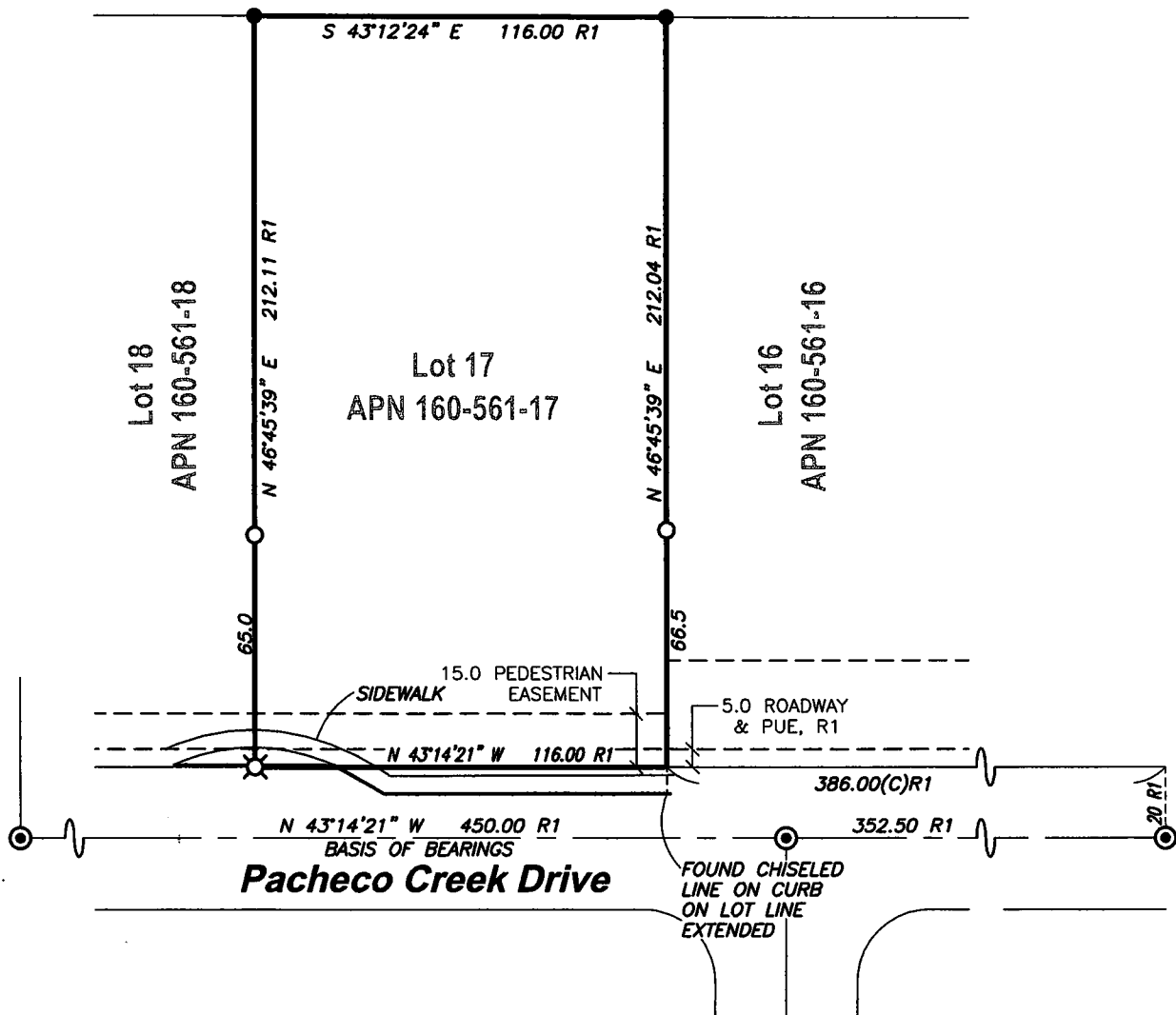
COUNTY SURVEYOR'S STATEMENT

This Corner Record was received MAY 21, 2021 and examined and filed JUNE 16, 2021.
 Signed T. W. Park P.L.S. or R.C.E. No. 8176
 Title COUNTY SURVEYOR



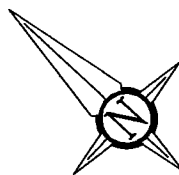
County Surveyor's Comment

APN 160-561-63
Parcel A



LEGEND

- FOUND 3/4-INCH IRON PIPE, BRASS NAIL & TAG, RCE 10759
- ⊙ FOUND 2-INCH BRASS DISK, PUNCH, RCE 10759
- ⊗ SET BRASS NAIL & TAG, PLS 7950
- SET 5/8-INCH REBAR, YELLOW CAP, PLS 7950
- R1 MAP OF PACHECO CREEK SUBDIVISION, 17 RM 15, MARIN COUNTY RECORDS
- (C) CALCUALTED
- PUE PUBLIC UTILITY EASEMENT



1031Survey, Inc.

HighDefinitionSurveying
1857 Rainier Circle, Petaluma, California, 94954
415-827-6370