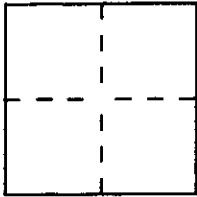


**CORNER RECORD**

Document Number 160-52  
County of MARIN, California

City of IGNACIO

Brief Legal Description PL 1 10 PM 80



**CORNER TYPE**

Government Corner  Control   
Meander  Property   
Rancho  Other   
Date of Survey 8/2/95

**COORDINATES (Optional)**

N. \_\_\_\_\_  
E. \_\_\_\_\_  
Zone \_\_\_\_\_ Datum \_\_\_\_\_  
Elev. \_\_\_\_\_

Corner — Left as found  Found and tagged  Established  Reestablished  Rebuilt

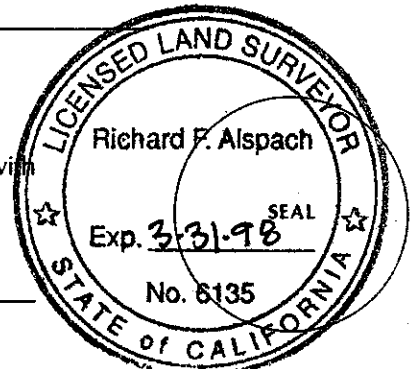
Identification and type of corner found: Evidence used to identify or procedure used to establish or reestablish the corner:  
MONUMENTS PER 10 PM 80 NOT FOUND AT CORNERS; REPLACED MONUMENTS PER RECORD DIMENSIONS USING MONUMENTS FOUND ON IGNACIO BLVD. (SEE SKETCH SHEET 2)

A description of the physical condition of the monument as found and as set or reset:  
SET 1/2" REBAR W/ CAP "LS 6135"

**SURVEYOR'S STATEMENT**

This Corner Record was prepared by me or under my direction in conformance with the Land Surveyors' Act on AUGUST 8 1995.

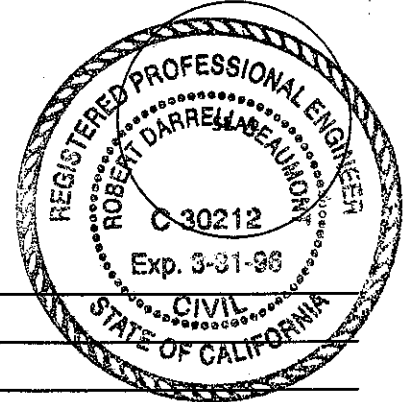
Signed Richard F. Alspach L.S. or R.C.E. Number LS 6135



**COUNTY SURVEYOR'S STATEMENT**

This Corner Record was received 8-11 1995 and examined and filed 8-11 1995.

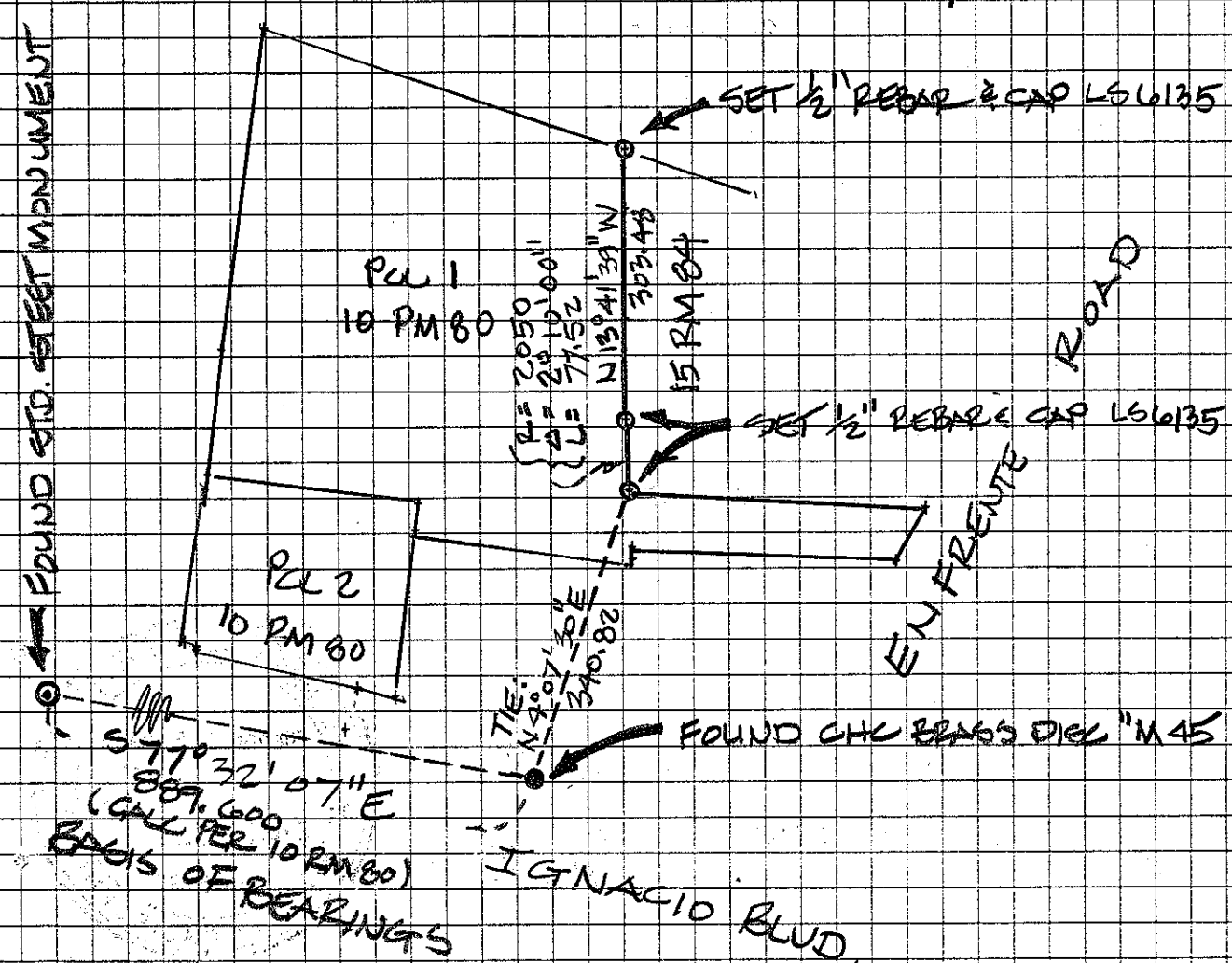
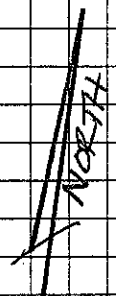
Signed [Signature] Title DES



County Surveyor's Comment \_\_\_\_\_

CC-PLOT output, date: 08-03-1995, time: 5:01:15 PM, FILE: IHA251.CCO

PLOT SCALE: 1 inch = 200 feet  
NORTH IS ROTATED 13.42 DEGREES CLOCKWISE.



NOTE: MONUMENTED ELY LINE OF PCL 1 10 PM 80  
PER FOUND MONUMENTS & RECORD DIMENSIONS  
FOUND ON 10 PM 80

POINTS OFF PAPER: NONE