

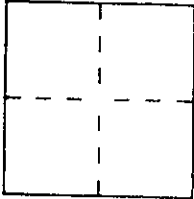
CORNER RECORD

City of Novato

Document Number A.P. # 160-511-26

County of Marin, California

Brief Legal Description Lot 180, 15 R.M. 92



CORNER TYPE

Government Corner Control
 Meander Property
 Rancho Other
 Date of Survey 12-02-93

COORDINATES (Optional)

N. _____
 E. _____
 Zone _____ Datum _____
 Elev. _____

Corner — Left as found Found and tagged Established Reestablished Rebuilt

Identification and type of corner found: Evidence used to identify or procedure used to establish or reestablish the corner:

Held monuments as per record map.

A description of the physical condition of the monument as found and as set or reset:

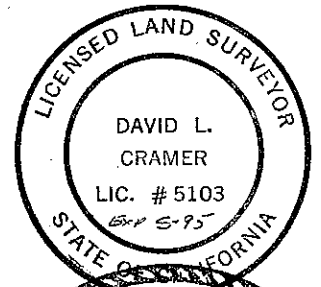
Found monuments as per record map. Checked angle and distance between monuments.

Monuments checked well and corners set fit well with lines of possession.

SURVEYOR'S STATEMENT

This Corner Record was prepared by me or under my direction in conformance with the Land Surveyors' Act on December 9, 1993

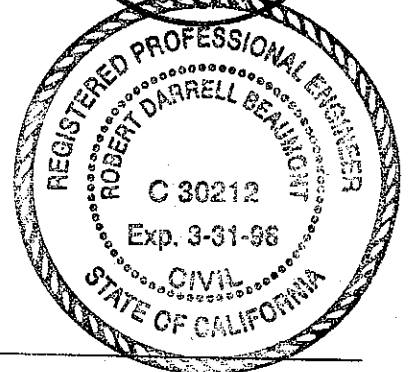
Signed [Signature] L.S. or R.C.E. Number 5103



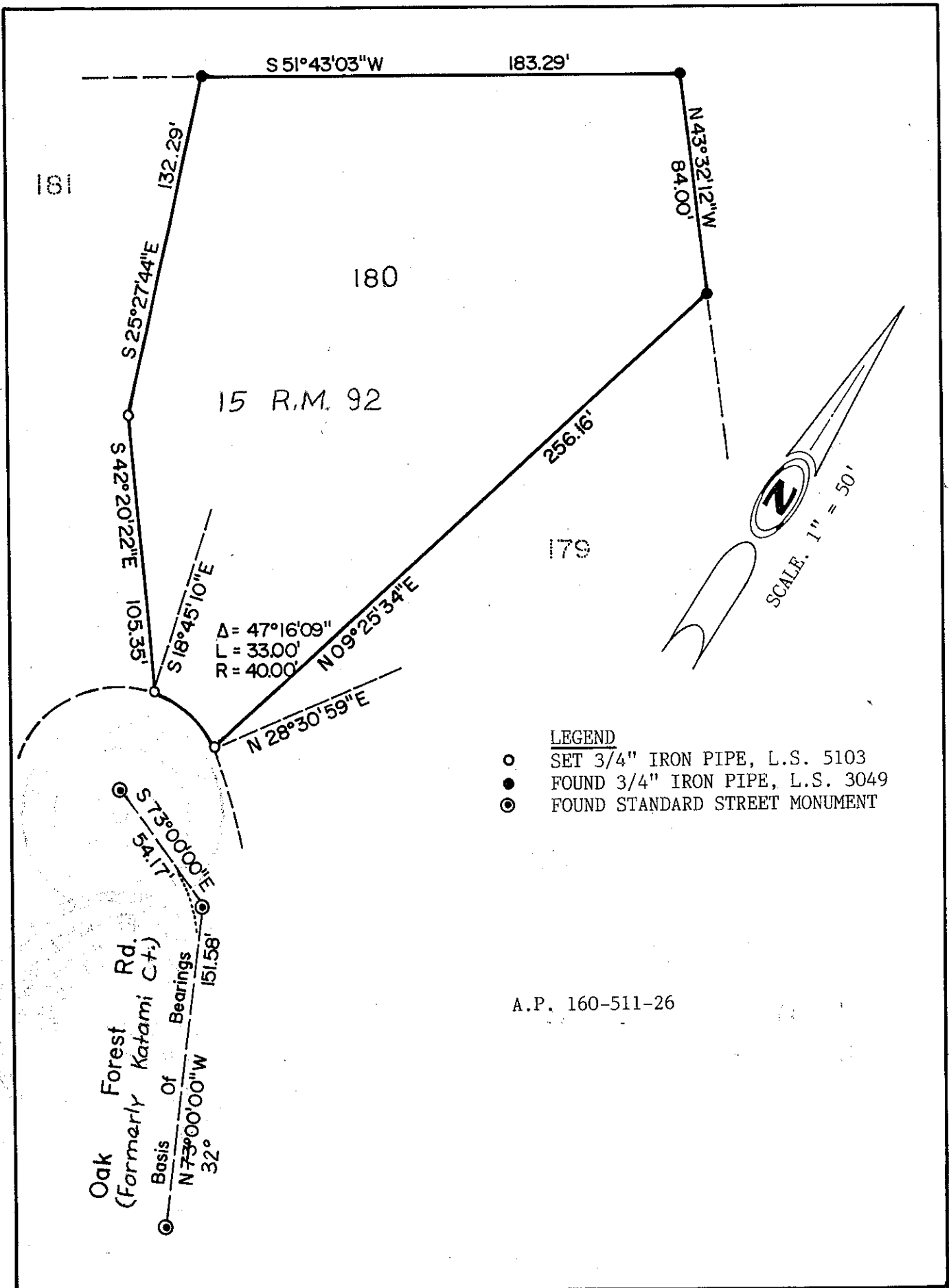
COUNTY SURVEYOR'S STATEMENT

This Corner Record was received December 14 1993 and examined and filed 12-17 1993.

Signed [Signature] Title DCS



County Surveyor's Comment _____



181

S 51°43'03"W

183.29'

132.29'

S 25°27'44"E

180

15 R.M. 92

S 42°20'22"E

105.35'

S 18°45'10"E

Δ = 47°16'09"
L = 33.00'
R = 40.00'

N 09°25'34"E

N 28°30'59"E

256.16'

179

N 43°32'12"W
84.00'

SCALE. 1" = 50'

LEGEND

- SET 3/4" IRON PIPE, L.S. 5103
- FOUND 3/4" IRON PIPE, L.S. 3049
- ⊙ FOUND STANDARD STREET MONUMENT

A.P. 160-511-26

Oak Forest Rd.
(Formerly Katami Ct.)
Basis Of Bearings
N 73°00'00"W
32°
S 73°00'00"E
54.17'
151.58'