

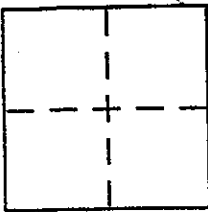
CORNER RECORD

Document Number APN 160-451-13

City of NOVATO

County of MARIN, California

Brief Legal Description LOT 341, MARIN GOLF & COUNTRY CLUB ESTATES, UNIT #5 (14RM21)



CORNER TYPE

Government Corner Control
Meander Property
Rancho Other
Date of Survey _____

COORDINATES (Optional)

N. _____
E. _____
Zone _____ NAD27 NAD83
NAD83 Epoch _____
Elev. _____
Vert. Datum: NGVD29 NAVD88
Meas. Units: Metric Imperial

Corner - Left as found Found and tagged Established Reestablished Rebuilt

Identification and type of corner found: Evidence used to identify or procedure used to establish or reestablish the corner:

FOUND STANDARD STREET MONUMENTS AS PER RECORD MAP (14 RM 21)

A description of the physical condition of the monument as found and as set or reset: SET 3/4" I.P. PLASTIC PLUG, RCE 30465

SURVEYOR'S STATEMENT

This Corner Record was prepared by me or under my direction in conformance with the Land Surveyor's Act on OUT 31

Signed Jay T. H P.L.S or R.C.E. No. RCE 30465



COUNTY SURVEYOR'S STATEMENT

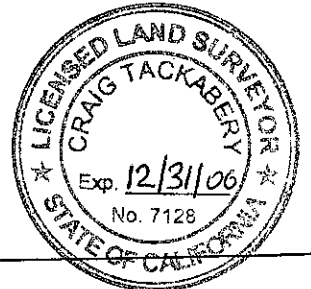
This Corner Record was received NOVEMBER 12, 2003

and examined and filed NOVEMBER 20, 2003

Signed C P.L.S or R.C.E. No. 7128

Title COUNTY SURVEYOR

County Surveyor's Comment _____

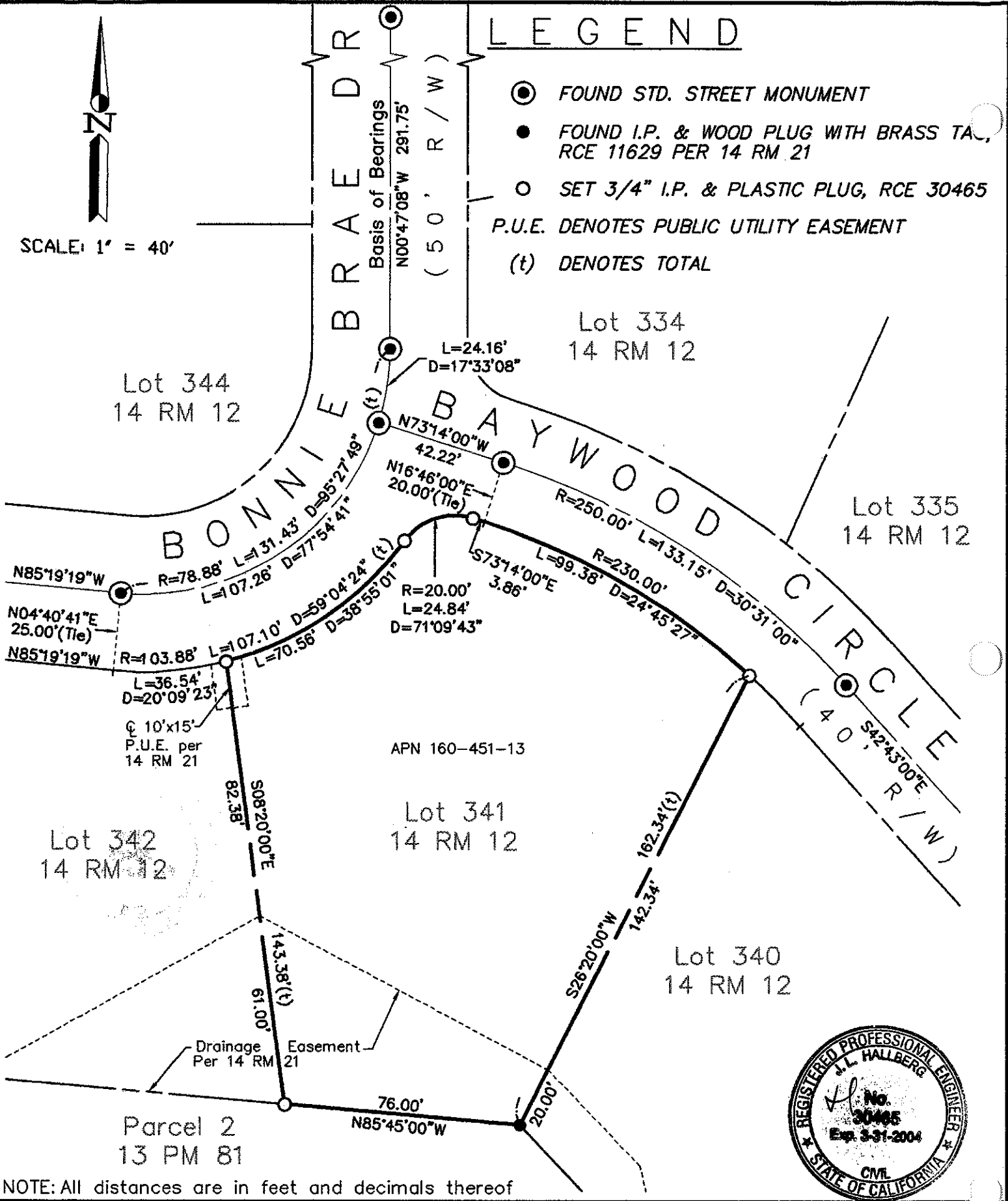




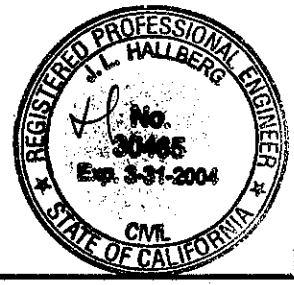
SCALE: 1" = 40'

LEGEND

- FOUND STD. STREET MONUMENT
- FOUND I.P. & WOOD PLUG WITH BRASS TA, RCE 11629 PER 14 RM 21
- SET 3/4" I.P. & PLASTIC PLUG, RCE 30465
- P.U.E. DENOTES PUBLIC UTILITY EASEMENT
- (t) DENOTES TOTAL



NOTE: All distances are in feet and decimals thereof



SHEET	1	OF	1
SCALE:	1" = 40'	DESIGN:	KMT
DATE:	10/28/03	DRAWN:	MDH
FILE:	03-186	CHECKED:	J.L.H

G:\Drawings\2003\2003-186\Cor-Rec.dwg

J.L. ENGINEERING
CIVIL ENGINEERS—LAND SURVEYORS
 1539 4th ST., SAN RAFAEL, CA. 94901 (415) 457-8647

Corner Record
 20 Baywood Circle
 APN 160-451-13, Novato, Marin County, CA