

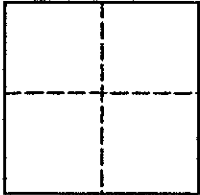
L. A. Stevens & Associates, Inc.
Professional Land Surveyors
Novato, California

CORNER RECORD

Document Number 160-441-05

City of Novato County of Marin California

Brief Legal Description Lot 309, 14 RM 21, Map of Marin Golf & Country Club Estates, Unit 5



CORNER TYPE

Government Corner Control
Meander Property
Rancho Other
Date of Survey April 2001

COORDINATES (Optional)

N _____
Zone _____ NAD27 NAD83
NAD 83 Epoch
Elev. _____
Vert. Datum: NGVD29 NAVD88
Meas. Units: Metric Imperial

Corner - Left as found Found and tagged Established Reestablished Rebuilt

Identification and type of corner found: Evidence used to identify or procedure used to establish or reestablish the corner:
See page 2 of 2

A description of the physical condition of the monument as found and as set or reset:
See page 2 of 2

SURVEYOR'S STATEMENT

This Corner Record was prepared by me or under my direction in conformance with
The Land Surveyor's Act in April 2001.
Signed [Signature] P.L.S 6649



COUNTY SURVEYOR'S STATEMENT

This Corner Record was received JUNE 19, 2001
and examined and filed JUNE 21, 2001
Signed [Signature] P.L.S. or R.G.E. No. 7128
DEPUTY
County Surveyors' Comment _____

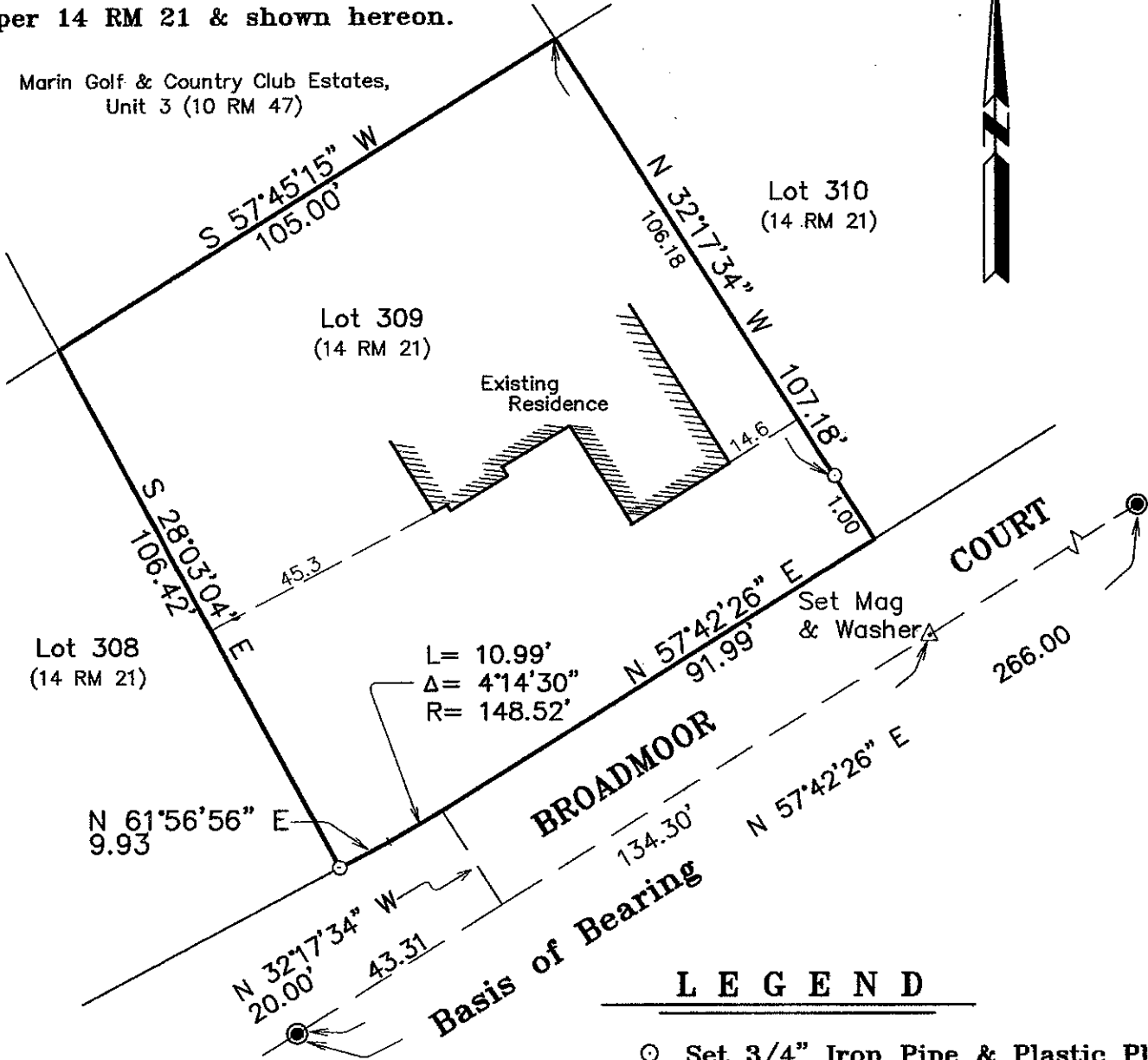


All distances shown are in feet and decimals thereof

BASIS OF BEARINGS

The Basis of Bearings for this survey is N 57°42'26" E between found centerline monuments in Broadmoor Court per 14 RM 21 & shown hereon.

Marin Golf & Country Club Estates,
Unit 3 (10 RM 47)



LEGEND

- ⊙ Set 3/4" Iron Pipe & Plastic Plug, Stamped LS 6649



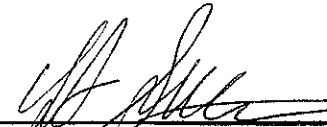
Lands of Delucchi

(Lot 309, 14 RM 21)

Novato Marin County California
Scale: 1" = 30' April 2001

L.A. Stevens & Associates, Inc.

Professional Land Surveyors * (415) 382-8321
1132 Bel Marin Keys Blvd. * Novato, CA 94947


Lawrence A. Stevens, PLS 6649
my license expires 12/31/03