

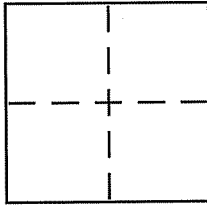
CORNER RECORD

Document Number APN 160-392-12

City of NOVATO

County of MARIN, California

Brief Legal Description LOT 103 OF 12 RM 99, MCR



CORNER TYPE

Government Corner Control
Meander Property
Rancho Other
Date of Survey SEPT 2007

COORDINATES (Optional)

N. _____
E. _____
Zone _____ NAD27 NAD83
NAD83 Epoch _____
Elev. _____
Vert. Datum: NGVD29 NAVD88
Meas. Units: Metric Imperial

Corner - Left as found Found and tagged Established Reestablished Rebuilt

Identification and type of corner found: Evidence used to identify or procedure used to establish or reestablish the corner:

FOUND CENTERLINE MONUMENTS ON MARIN OAKS DRIVE,
AS SHOWN ON PAGE 2

A description of the physical condition of the monument as found and as set or reset:

SET REBAR AT LOT CORNERS, NOTHING FOUND

SURVEYOR'S STATEMENT

This Corner Record was prepared by me or under my direction in conformance with the Land Surveyor's Act on NOVEMBER 30 2007

Signed [Signature] P.L.S. or R.C.E. No. 7950



COUNTY SURVEYOR'S STATEMENT

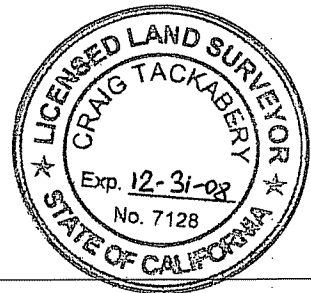
This Corner Record was received DECEMBER 6, 2007

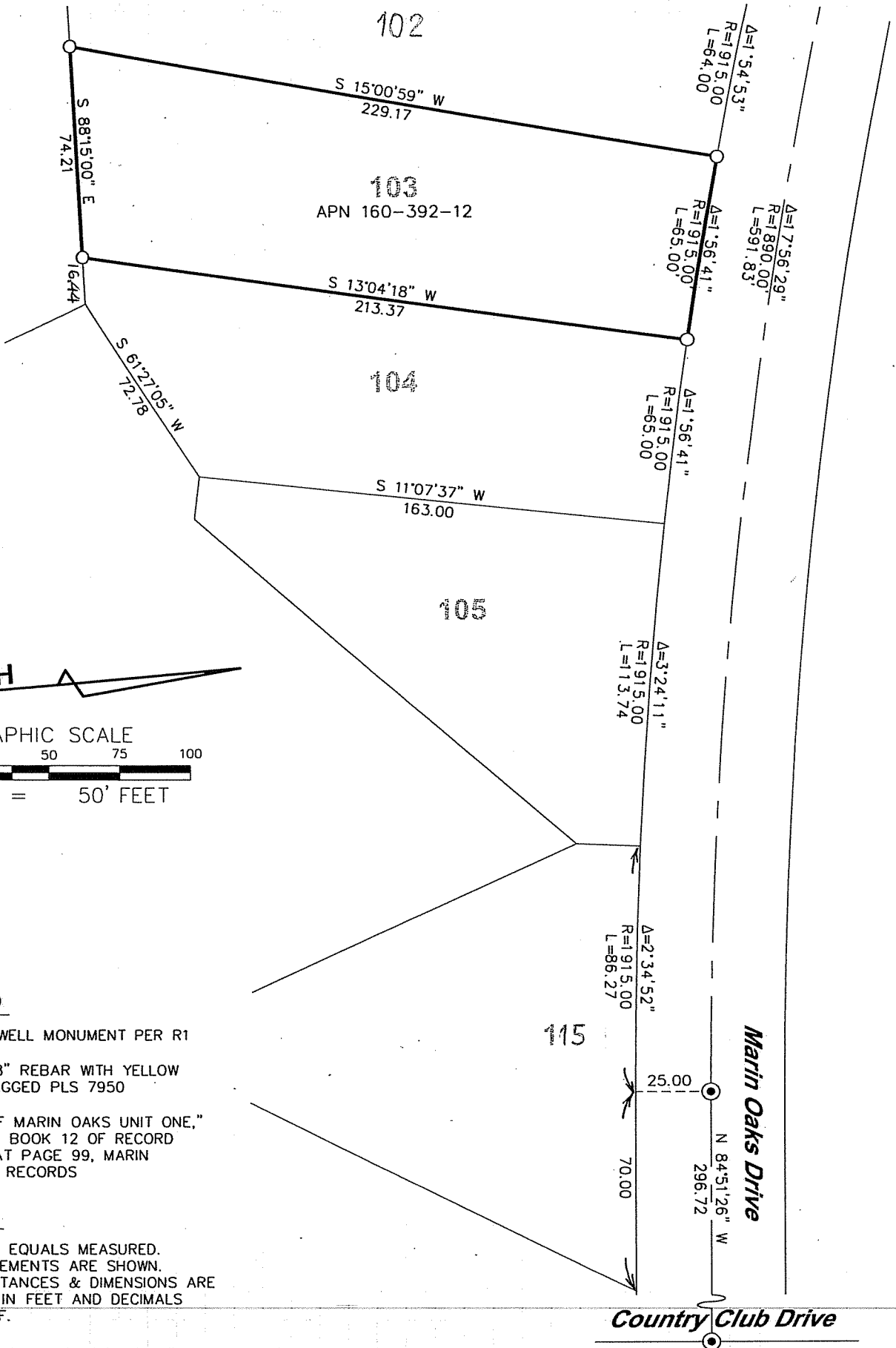
and examined and filed JANUARY 9, 2008

Signed [Signature] P.L.S. or R.C.E. No. 7128

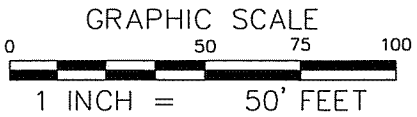
Title COUNTY SURVEYOR

County Surveyor's Comment _____





NORTH



LEGEND

- FOUND WELL MONUMENT PER R1
- SET 5/8" REBAR WITH YELLOW CAP, TAGGED PLS 7950
- R1 "MAP OF MARIN OAKS UNIT ONE," FILED IN BOOK 12 OF RECORD MAPS, AT PAGE 99, MARIN COUNTY RECORDS

NOTES

1. RECORD EQUALS MEASURED.
2. NO EASEMENTS ARE SHOWN.
3. ALL DISTANCES & DIMENSIONS ARE SHOWN IN FEET AND DECIMALS THEREOF.