

CORNER RECORD

Assessor's Parcel No. 160-381-02

City of Novato County of Marin California

Brief Legal Description: Lot 265, 10 RM 48 Marin County Records

CORNER TYPE

COORDINATES
(Optional)

Lot in Existing Subdivision

None

Corners - None found. Calculated the lot corners and set points on the property line as shown on Page 2. Calculations were based on the street monuments in Prestwick Court as shown on the map.

Description of Monuments reset: Monuments set or referenced are shown on Page 2.

SURVEYOR'S STATEMENT

This Corner Record was prepared by me or under my direction in conformance with the Land Surveyor's Act on November 20, 2014.

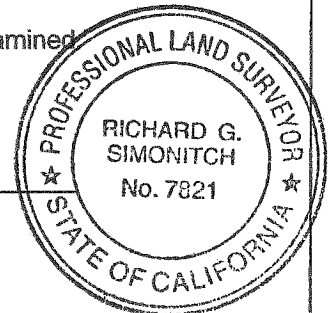


Signed Dale White LS 4397

COUNTY SURVEYOR'S STATEMENT

This Corner Record was received 1/2/2015, 20____, and examined
and filed JANUARY 6, 20 15.

Signed Richard G. Simonitch Title DEPUTY



County Surveyor's Comments _____

Corner Record

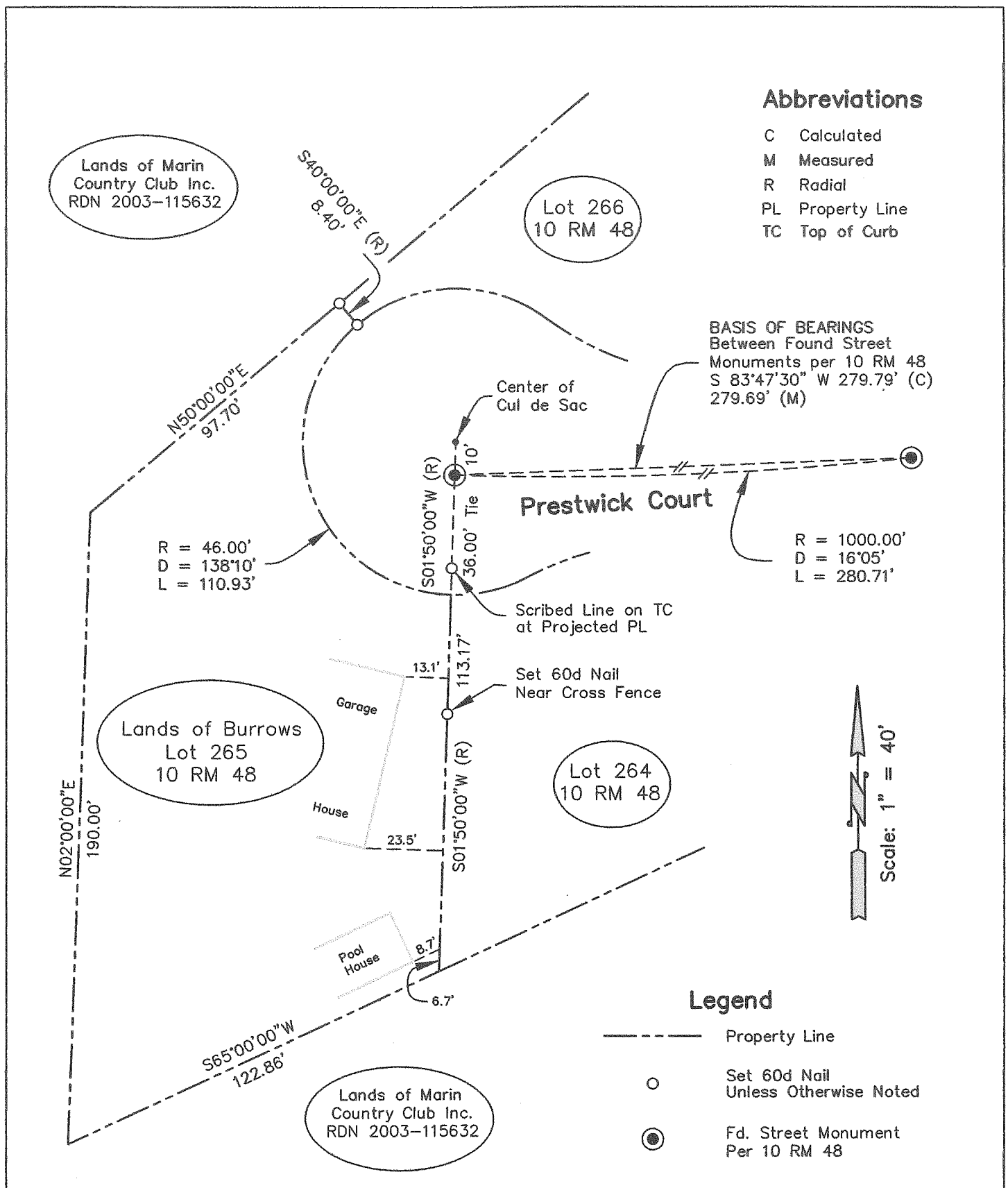
Abbreviations

- C Calculated
- M Measured
- R Radial
- PL Property Line
- TC Top of Curb

BASIS OF BEARINGS
 Between Found Street
 Monuments per 10 RM 48
 S 83°47'30" W 279.79' (C)
 279.69' (M)

R = 1000.00'
 D = 16°05'
 L = 280.71'

R = 46.00'
 D = 138°10'
 L = 110.93'



Legend

- Property Line
- Set 60d Nail Unless Otherwise Noted
- Fd. Street Monument Per 10 RM 48

33 Prestwick Ct.
 Novato, CA
 APN 160-381-02

Corner Record

Property Survey
 Lot 265, 10 RM 48
 Marin County Records