

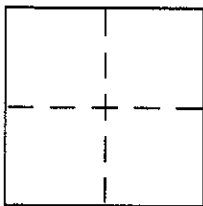
**CORNER RECORD**

Document Number A.P.N. 160-365-01

City of NOVATO

County of MARIN, California

Brief Legal Description LOT 218 PER 10 R.M. 48



**CORNER TYPE**

Government Corner  Control   
Meander  Property   
Rancho  Other   
Date of Survey 10-14-03

**COORDINATES (Optional)**

N. \_\_\_\_\_  
E. \_\_\_\_\_  
Zone \_\_\_\_\_ NAD27  NAD83   
NAD83 Epoch \_\_\_\_\_  
Elev. \_\_\_\_\_  
Vert. Datum: NGVD29  NAVD88   
Meas. Units: Metric  Imperial

Corner - Left as found  Found and tagged  Established  Reestablished  Rebuilt

Identification and type of corner found: Evidence used to identify or procedure used to establish or reestablish the corner:

= SEE OVER =

A description of the physical condition of the monument as found and as set or reset:

= SEE OVER =

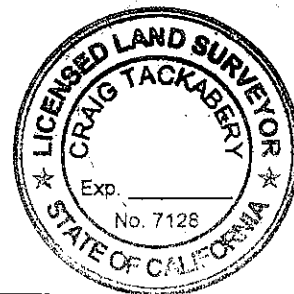
**SURVEYOR'S STATEMENT**

This Corner Record was prepared by me or under my direction in conformance with the Land Surveyor's Act on FEBRUARY 23 2004  
Signed David Contreras P.L.S. or R.C.E. No. 5065



**COUNTY SURVEYOR'S STATEMENT**

This Corner Record was received FEBRUARY 25, 2004  
and examined and filed MARCH 15, 2004  
Signed \_\_\_\_\_ P.L.S. or R.C.E. No. 7128  
Title COUNTY SURVEYOR

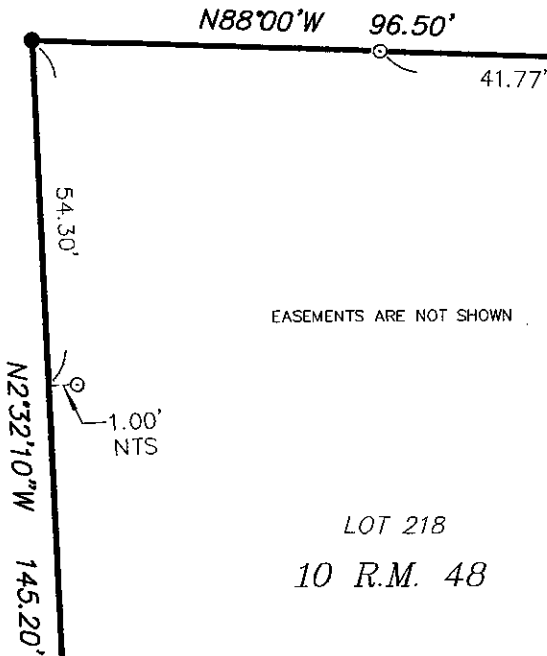


County Surveyor's Comment \_\_\_\_\_

**LEGEND**

- ⊙ = FOUND STANDARD STREET MONUMENT PER 10 R.M.48
- = FOUND 3/4" IRON PIPE & TAG, LS 3303 PER 18 R.M.54
- ⊘ = SET NAIL & TAG, L.S. 5065
- = SET 1/2" REBAR AND PLASTIC CAP, L.S. 5065
- NTS = NOT TO SCALE

LOT 445  
18 R.M. 54



THUNDERBIRD DRIVE  
(50' R.O.W.)

Curved boundary: R=180' Δ=53°20'00" L=167.55'

Point measurement: N80°40'W 25.00' (TIE)

R=100'  
Δ=11°27'30"  
L=20.00'

R=20'  
Δ=116°10'  
L=40.55'

THUNDERBIRD COURT  
(FORMERLY PIPING ROCK ROAD)  
(40' R.O.W.)

Boundary measurements for Thunderbird Court:  
Top: N54°30'W 117.00'  
Bottom: N9°20'E 148.00'

