

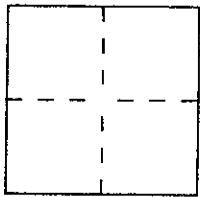
CORNER RECORD

Document Number _____

City of NOVATO

County of MARIN, California

Brief Legal Description LOT 215 10 RM 48 AP# 160-364-03



CORNER TYPE

Government Corner Control
 Meander Property
 Rancho Other
 Date of Survey JULY 16, 1997

COORDINATES (Optional)

N. _____
 E. _____
 Zone _____ Datum _____
 Elev. _____

Corner — Left as found Found and tagged Established Reestablished Rebuilt

Identification and type of corner found: Evidence used to identify or procedure used to establish or reestablish the corner:
FOUND STANDARD STREET MONUMENTS PER 10 RM 48 AS SHOWN
ON REVERSE. [BRASS PIN IN CONCRETE WITH ILLEGIBLE TAG
FOUND IN MONUMENT CASING]

A description of the physical condition of the monument as found and as set or reset: SET 3/4" IRON
PIPE TAGGED PLS 5296 AS SHOWN ON REVERSE. WITNESS
NOTES: WEST 4' TO JOINT POLE, NORTHEAST 1.3' TO 9" FIR,
7.8' WESTERLY TO FACE OF CURB.

SURVEYOR'S STATEMENT

This Corner Record was prepared by me or under my direction in conformance with
 the Land Surveyors' Act on REVISIED 8-31-97
JULY 22, 19 97.

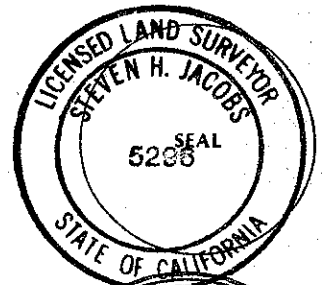
Signed [Signature] L.S. or R.C.E. Number PLS 5296

COUNTY SURVEYOR'S STATEMENT

This Corner Record was received September 9 19 97 and examined
 and filed September 9 19 97.

Signed [Signature] Title Deputy

County Surveyor's Comment _____



LEGEND

⊙ FOUND STANDARD STREET MONUMENT

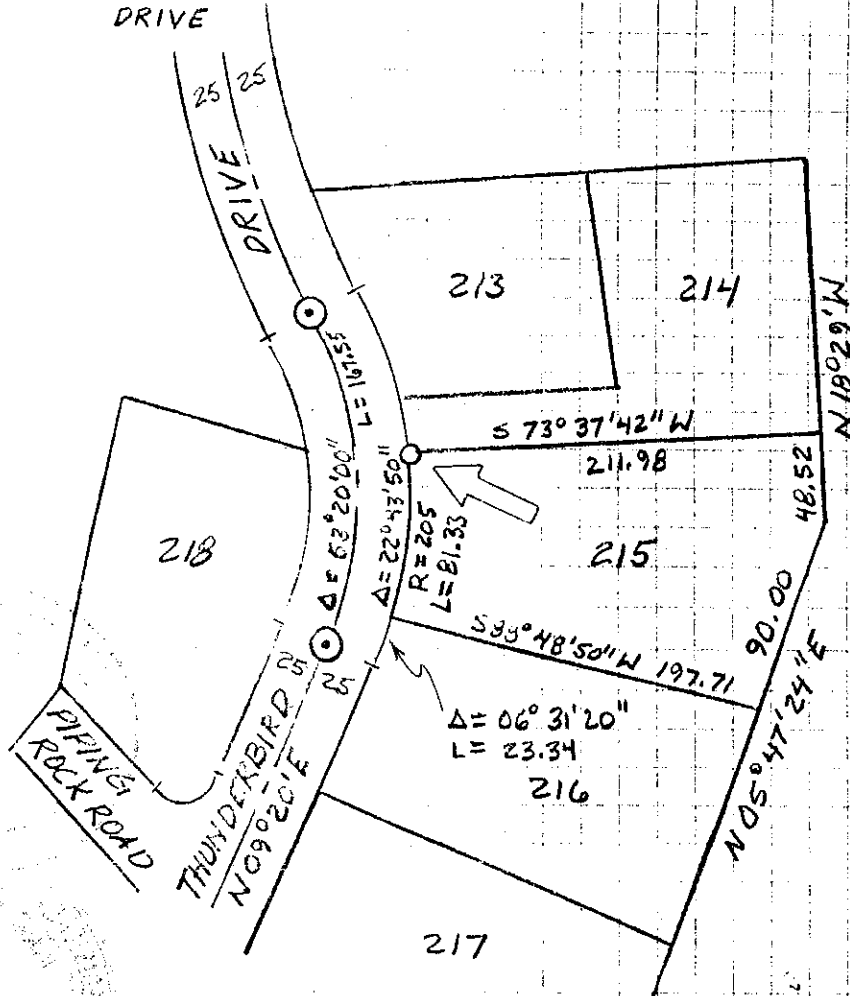
○ SET 3/4" IRON PIPE, PLS 5296

➔ LOOK

INVERSE SOUTHERLY MONUMENT
TO NORTHERLY MONUMENT
N 17°20'00"E 161.57

SCALE: 1" = 100'

TO FAIRWAY
DRIVE



MARIN GOLF & COUNTRY CLUB

ESTATES UNIT NO. 4

10 RM 48

APN 160-364-03

JACOBS LAND SURVEYING