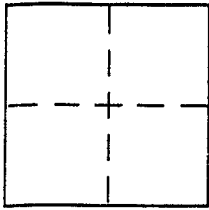


CORNER RECORD

Document Number APN 160-322-20
County of MARIN, California

City of NOVATO

Brief Legal Description _____



CORNER TYPE

- Government Corner Control
- Meander Property
- Rancho Other

Date of Survey MARCH 30, 2005

COORDINATES (Optional)

N. _____
 E. _____
 Zone _____ NAD27 NAD83
 NAD83 Epoch _____
 Elev. _____
 Vert. Datum: NGVD29 NAVD88
 Meas. Units: Metric Imperial

Corner - Left as found Found and tagged Established Reestablished Rebuilt

Identification and type of corner found: Evidence used to identify or procedure used to establish or reestablish the corner:

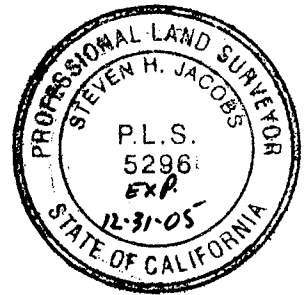
FOUND STANDARD STREET WELL MONUMENTS WITH BRASS PIN IN CONCRETE DISK AS SHOWN ON "MARIN GOLF AND COUNTRY CLUB ESTATES, UNIT No. 3, RECORDED IN BOOK 10 OF RECORD MAPS AT PAGE 47, ON AS SHOWN ON REVERSE SIDE OF THIS SHEET.

A description of the physical condition of the monument as found and as set or reset: SET 3/4" IRON PIPES TAGGED PLS 5296 AND SET CUT '+' IN BRICK BORDER OF CONCRETE DRIVEWAY AS SHOWN ON REVERSE SIDE OF THIS SHEET.

SURVEYOR'S STATEMENT

This Corner Record was prepared by me or under my direction in conformance with the Land Surveyor's Act on APRIL 2, 2005

Signed [Signature] P.L.S. or R.C.E. No. P.L.S. 5296



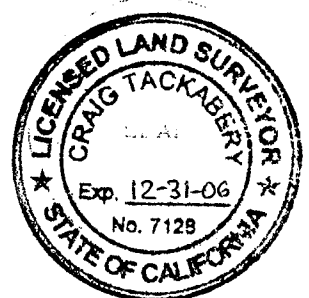
COUNTY SURVEYOR'S STATEMENT

This Corner Record was received SEPTEMBER 27, 2005

and examined and filed OCTOBER 25, 2005

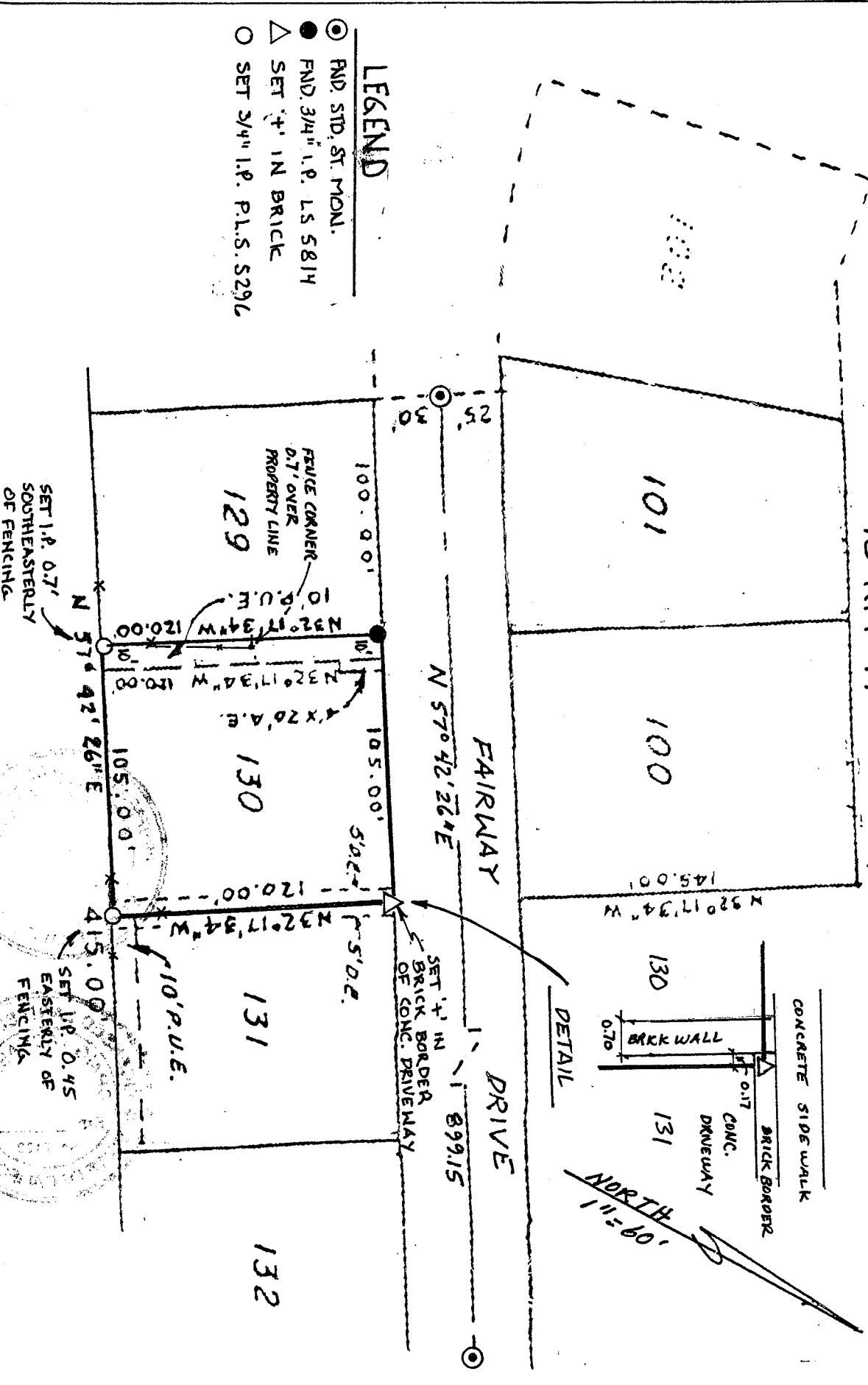
Signed [Signature] P.L.S. or R.C.E. No. 7128

Title COUNTY SURVEYOR



County Surveyor's Comment _____

(SEE SHEET 2 OF 3)
 MARIN GOLF AND COUNTRY CLUB ESTATES
 UNIT N^o 3
 10 RM 47



LEGEND

- ⊙ FND. STD. ST. MON.
- FND. 3/4" I.P. L.S. 5814
- △ SET '4" IN BRICK
- SET 3/4" I.P. P.L.S. 5296

