

CORNER RECORD

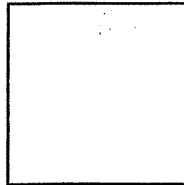
APN 160-311-05

Document No 10 RM 48

City of Novato

County of Marin, California

Brief Legal Description Lot 161, 10 RM 48



CORNER TYPE

COORDINATES (Optional)

Government Corner Control
Meander Property
Rancho Other
Date of Survey July 21, 2008

N. _____
E. _____
Zone _____ Datum _____
Elev. _____

Corner- Left as found Found and tagged Established Reestablished Rebuilt

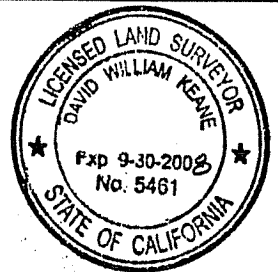
Identification and type of corner found: Evidence used to identify or procedure to establish or reestablish the corner:
Established property corners on Lot 161, 10 RM 48, per found monuments as shown on herein sht. 2.

A description of the physical condition of the monument as found and as set or reset:
Set monuments at locations shown on herein sheet 2. Found monuments, shown on herein sheet 2.

SURVEYOR'S STATEMENT

This Corner Record was prepared by me or under my direction in conformance with the Land Surveyors Act on August 4, 2008.

Signed [Signature] PLS Number 5461

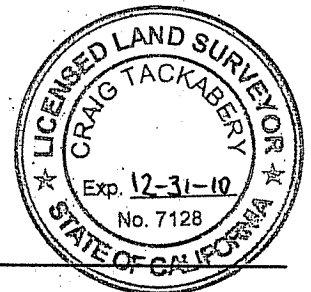


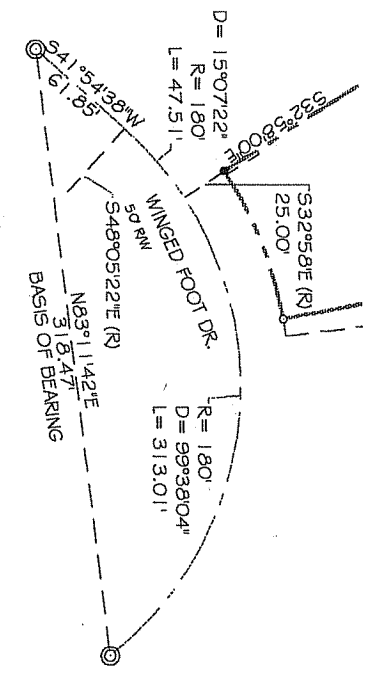
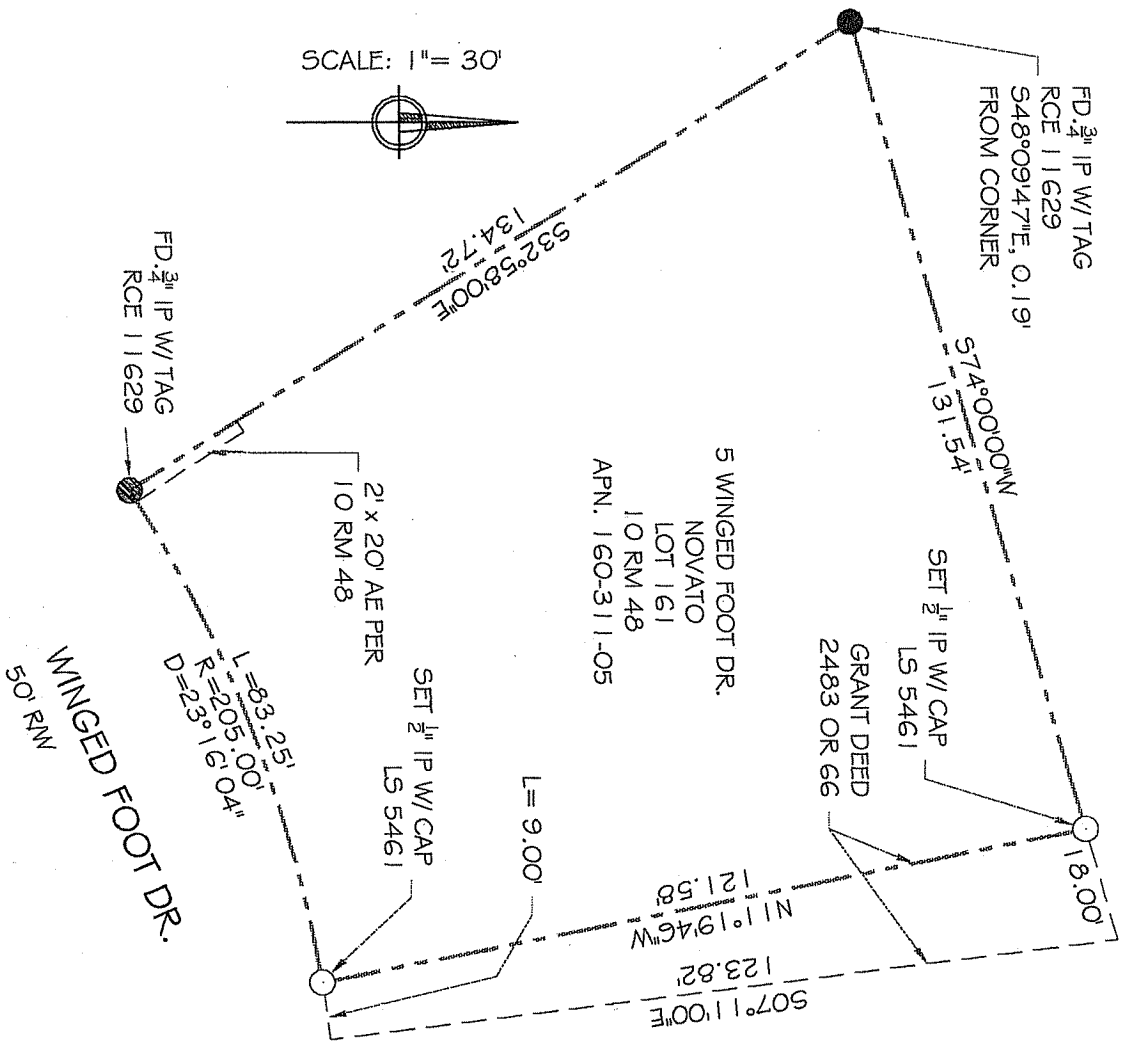
COUNTY SURVEYOR'S STATEMENT

This Corner Record was received AUGUST 6, 2008 and examined and filed JUNE 15, 2009.

Signed [Signature] Title COUNTY SURVEYOR

County Surveyor's Comments _____





BASIS OF BEARING & TIE

NOTE:

1. ALL DIMENSIONS SHOWN HEREIN ARE PER 10 RM 48 UNLESS OTHERWISE NOTED.
2. ALL DISTANCES AND DIMENSIONS ARE IN FEET AND DECIMALS THEREOF.
3. APN. 160-311-05

LEGEND:

- SET 1/2" IRON PIPE W/ PL. CAP LS 5461
- ⊙ FD. STD. STREET MONUMENT PER 10 RM 48
- FOUND 3/4" IP W/ TAG RCE 11629, NO RECORD

EXHIBIT "A"

DAVID KEANE
Professional Land Surveyors

tel: (415) 927-8801 fax: (415) 927-8802
5710 Paradise Drive, Ste. 8
Corte Madera, CA 94925

07-08-22 DATE: 7/29/08