

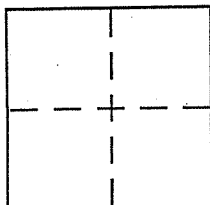
CORNER RECORD

Document Number 160-273-10

City of NOVATO

County of MARIN, California

Brief Legal Description Sub. Mon of "Map of Loma Verde No. 1" 8 R.M. 4 B



CORNER TYPE

Government Corner Control
Meander Property
Rancho Other
Date of Survey January 2010

COORDINATES (Optional)

N. _____
E. _____
Zone _____ NAD27 NAD83
NAD83 Epoch _____
Elev. _____
Vert. Datum: NGVD29 NAVD88
Meas. Units: Metric Imperial

Corner - Left as found Found and tagged Established Reestablished Rebuilt

Identification and type of corner found: Evidence used to identify or procedure used to establish or reestablish the corner:

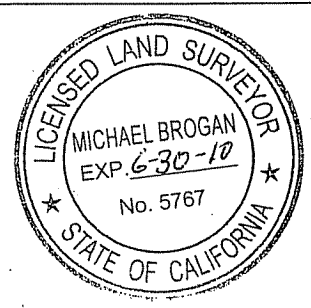
Monument will be destroyed by Road Construction
- See Back for location & Reference scheme

A description of the physical condition of the monument as found and as set or reset:

See Back

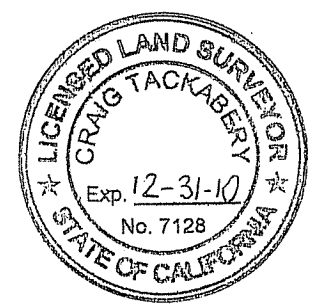
SURVEYOR'S STATEMENT

This Corner Record was prepared by me or under my direction in conformance with the Land Surveyor's Act on February 2, 2010
Signed Michael A. Brogan P.L.S or R.C.E. No. LS 5767
CHIEF OF SURVEYS - MARIN CO. DPW



COUNTY SURVEYOR'S STATEMENT

This Corner Record was received FEBRUARY 4, 2010
and examined and filed MARCH 1, 2010
Signed [Signature] P.L.S or R.C.E. No. 7128
Title COUNTY SURVEYOR



County Surveyor's Comment _____

MONUMENT REFERENCED PER 8 R.M. 48
 MAP OF LOMA VERDE NO. 1

SURVEY SECTION
 DEPT. OF PUBLIC WORKS
 MARIN COUNTY

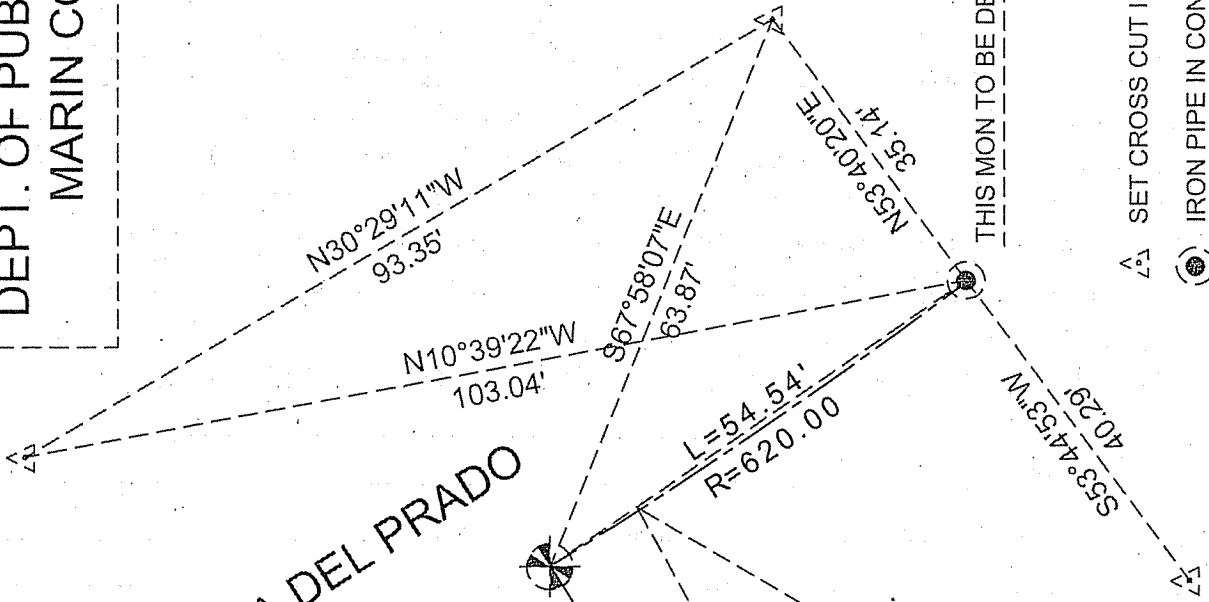
NOT TO SCALE

ALAMEDA DEL PRADO

CALLE ARBOLEDA
 BASIS OF BEARINGS
 N68°05'41"E RADIAL
 (120.11 MAP)
 120.10'

CHORD MEAS.
 S34°25'31"E
 54.52'
 CHORD MAP
 S34°36'25"E
 54.40'

L=54.54'
 R=620.00



THIS MON TO BE DESTROYED

- ▲ SET CROSS CUT IN WALK
- IRON PIPE IN CONCRETE MONUMENT
- ⊗ PIN IN CONCRETE MONUMENT

NEAREST PARCEL = APN 160-273-10