

CORNER RECORD

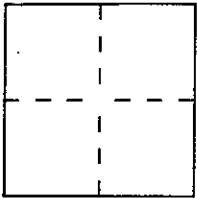
Document Number A.P.N. 160-273-06

City of VICINITY OF NOVATO

County of MARIN, California

Brief Legal Description LOT 352

Per 9 R.M. 14



CORNER TYPE

COORDINATES (Optional)

Government Corner Control
Meander Property
Rancho Other
Date of Survey 7-16-99

N. _____
E. _____
Zone _____ Datum _____
Elev. _____

Corner — Left as found Found and tagged Established Reestablished Rebuilt

Identification and type of corner found: Evidence used to identify or procedure used to establish or reestablish the corner:

= See Over =

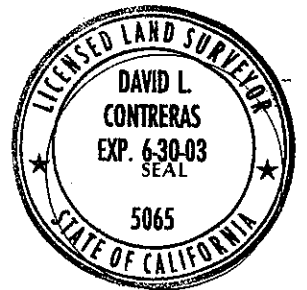
A description of the physical condition of the monument as found and as set or reset:

= See over =

SURVEYOR'S STATEMENT

This Corner Record was prepared by me or under my direction in conformance with the Land Surveyors' Act on December 29 19 99

Signed David Contreras L.S. or R.C.E. Number 5065

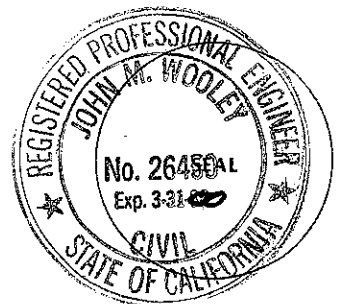


COUNTY SURVEYOR'S STATEMENT

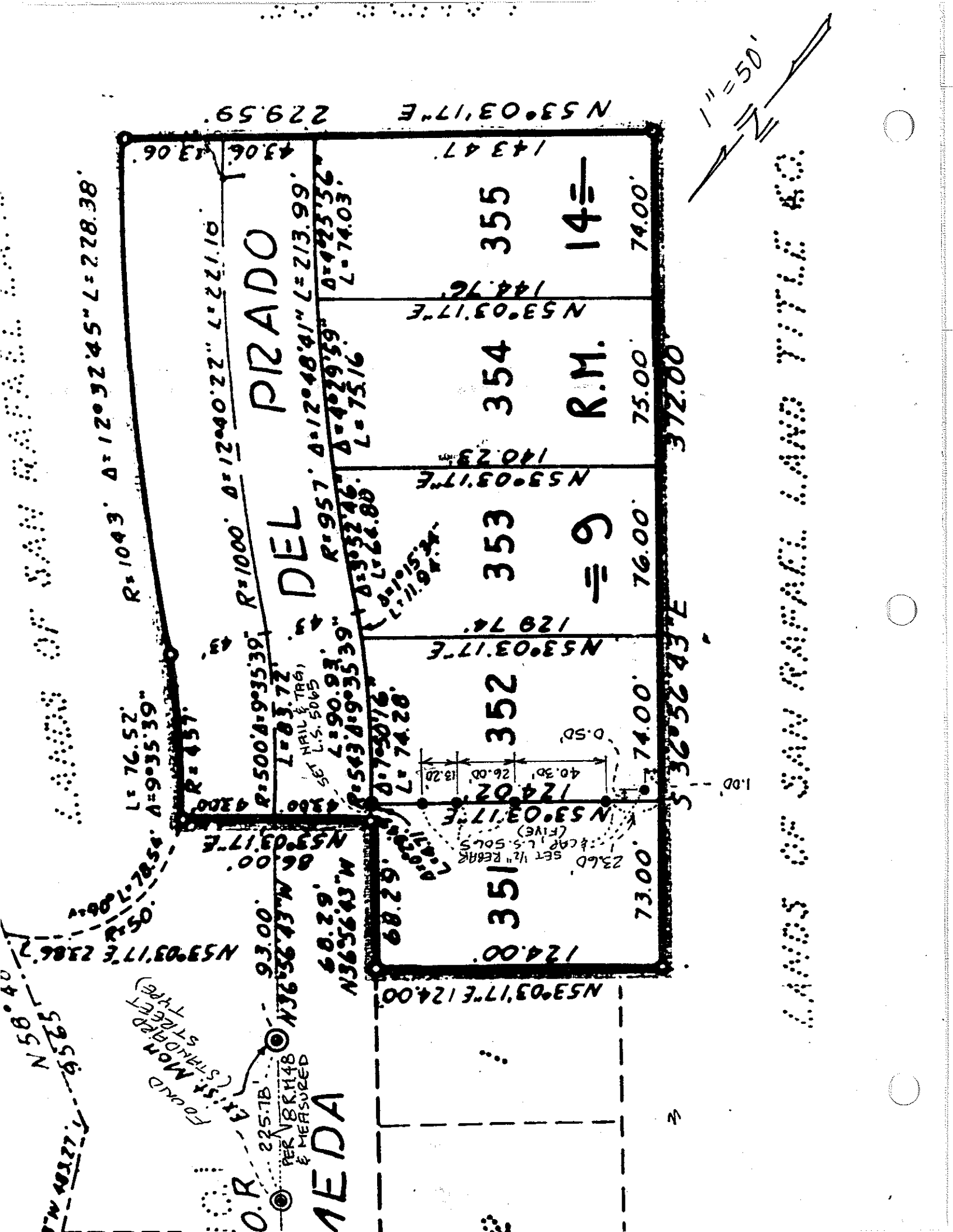
This Corner Record was received January 4 ²⁰⁰⁰ and examined

and filed January 6 19 2000

Signed John M. Woolley Title Deputy

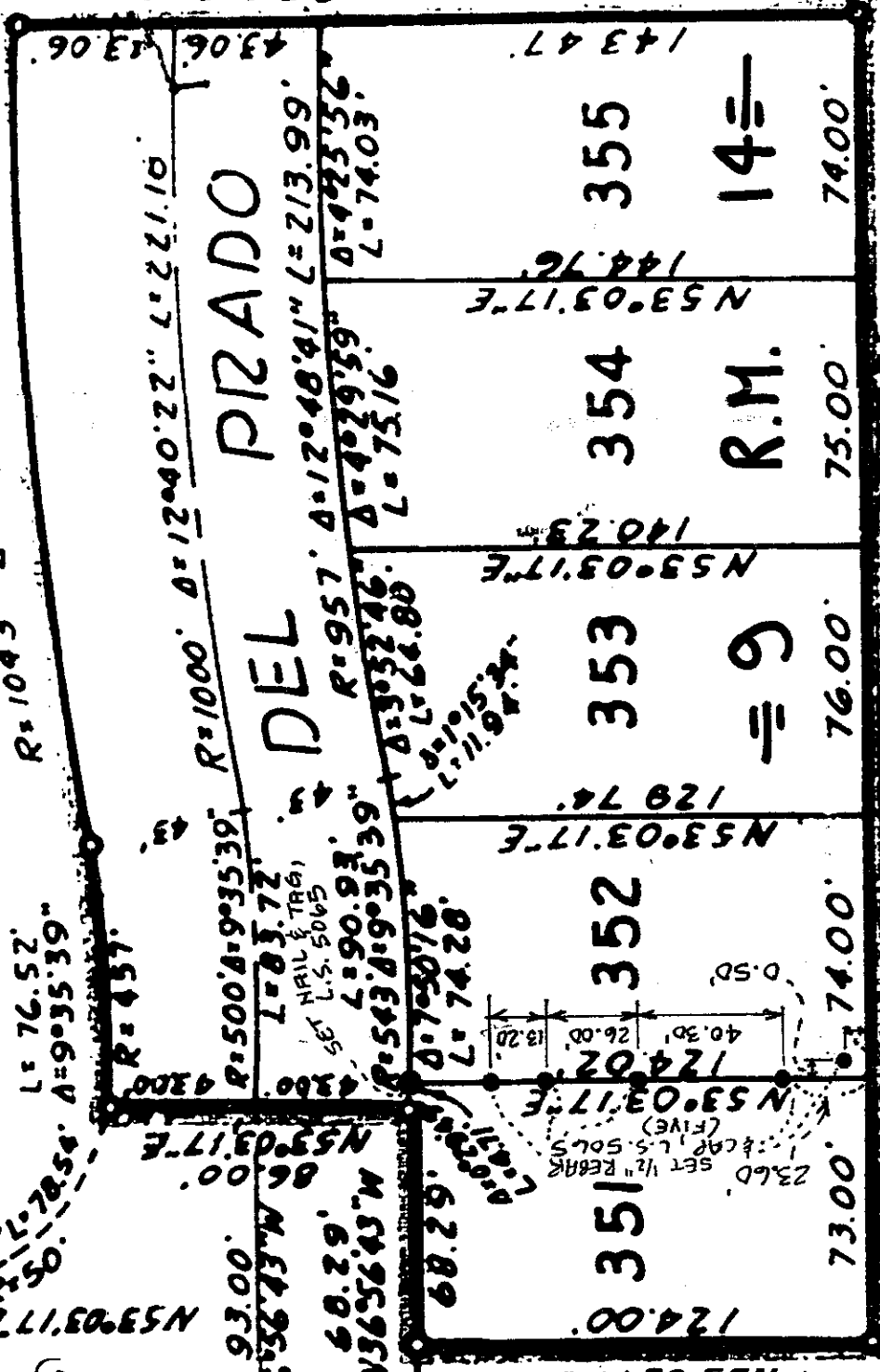


County Surveyor's Comment _____



1.00'

LINES OF SAN RAPHAEL AND TITUS RD



N 56° 40' E 525.75' L 483.77' L

L = 76.52' R = 1043' Δ = 120° 32' 45" L = 228.38'

R = 457' L = 83.72' R = 500' Δ = 9° 35' 39" A = 9° 35' 39" R = 1000' Δ = 12° 40' 22" L = 221.10'

R = 957' Δ = 12° 48' 41" L = 213.99'

Δ = 4° 29' 39" Δ = 4° 23' 36" L = 74.03' L = 75.16'

Δ = 3° 32' 46" Δ = 1° 15' 24" L = 26.80' L = 11.97' 24"

Δ = 7° 50' 16" L = 74.28'

23.60 SET 1/2" REBAR (FIVE) L.S. 5065

0.50'

124.00' 73.00' 74.00' 76.00' 75.00' 74.00'

372.00'

336.52' 43.7' E

FOUND MONUMENT (STANDARD TYPE)

O.R. 225.78' PER V.B.R. H. 48 & MEASURED

AEDA

68.29' N36° 56' 43" W

N53° 03' 17" E 124.00'

N53° 03' 17" E 124.02'

N53° 03' 17" E 120.74'

N53° 03' 17" E 140.23'

N53° 03' 17" E 144.76'

143.47'

229.59' N53° 03' 17" E

4306' 1306'