

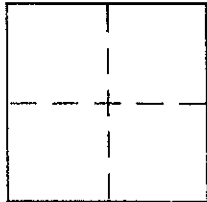
CORNER RECORD

Document Number 160-252-15

City of NOVATO

County of MARIN, California

Brief Legal Description LOT 384 MAP OF LOMA VERDE #3A 9 RM 23



CORNER TYPE

Government Corner Control
Meander Property
Rancho Other
Date of Survey Oct. 8, 2003

COORDINATES (Optional)

N. _____
E. _____
Zone _____ NAD27 NAD83
NAD83 Epoch _____
Elev. _____
Vert. Datum: NGVD29 NAVD88
Meas. Units: Metric Imperial

Corner - Left as found Found and tagged Established Reestablished Rebuilt

Identification and type of corner found: Evidence used to identify or procedure used to establish or reestablish the corner:

Reestablish a portion of the Easterly line of
LOT 384, MAP OF LOMA VERDE #3A, 9 RM 23 from existing
street monuments of record. See sketch on reverse
side for details

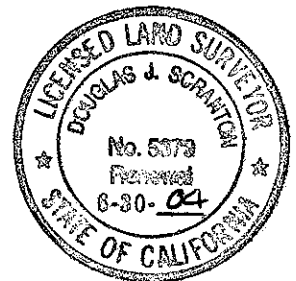
A description of the physical condition of the monument as found and as set or reset: set lead plug

E. TAG LS 5379 WITH BRASS NAIL IN CONCRETE ON
LOT LINE AS SHOWN IN SKETCH & ALSO SET LEAD PLUG
WITH TAG LS 5379 WITH BRASS NAIL ON TOP OF CURB
ON A SOUTHERLY PROJECTION OF THE EASTERLY LOT LINE

SURVEYOR'S STATEMENT

This Corner Record was prepared by me or under my direction in conformance with the Land Surveyor's Act on September 25, 2003

Signed Douglas J. Scranton P.L.S. or R.C.E. No. PLS 5379



COUNTY SURVEYOR'S STATEMENT

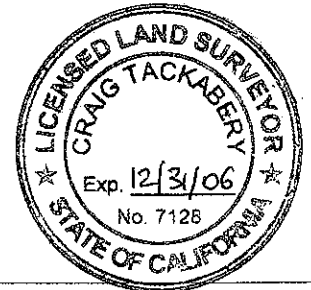
This Corner Record was received October 10, 2003

and examined and filed October 16, 2003

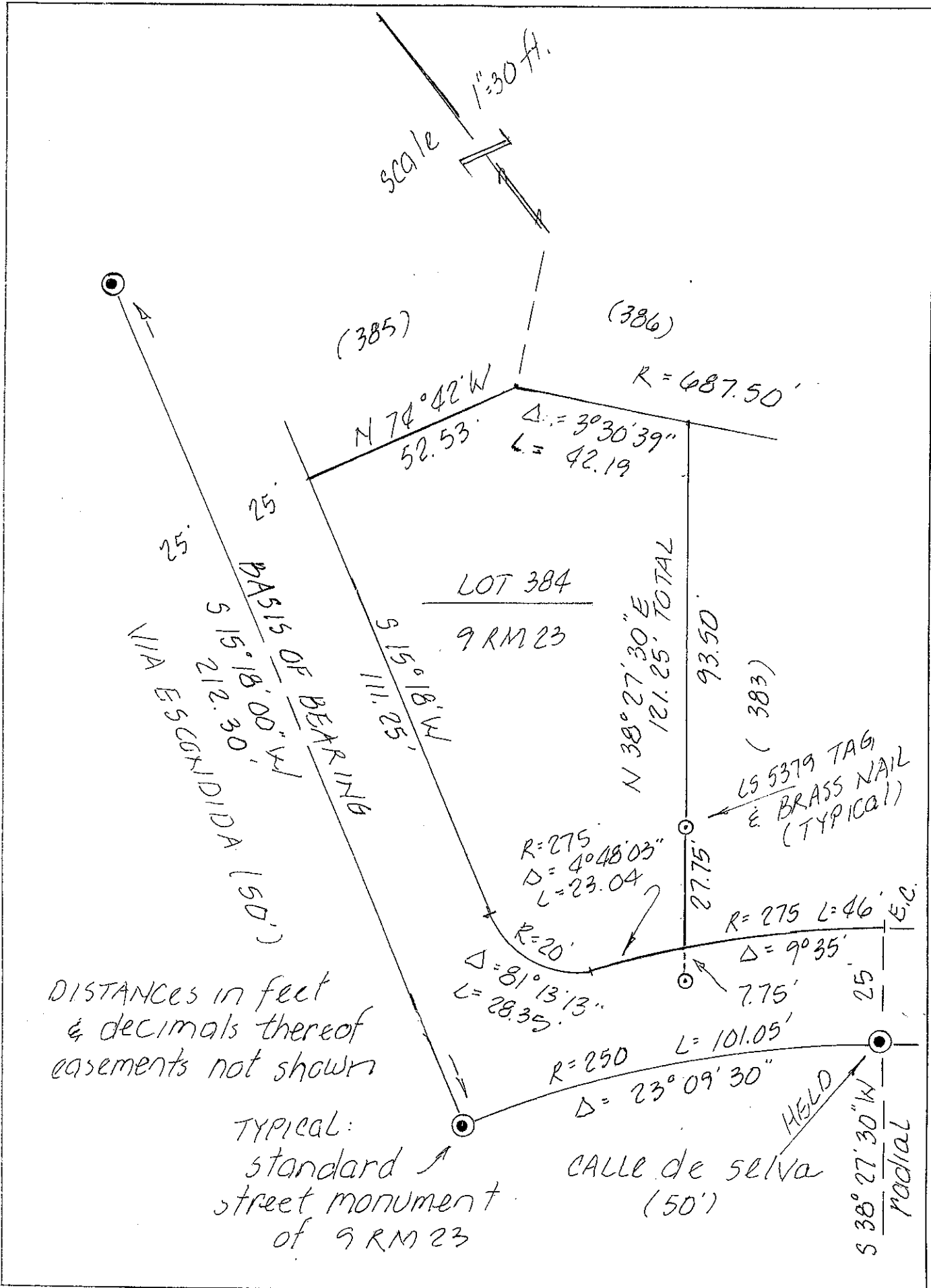
Signed Craig Tackabery P.L.S. or R.C.E. No. 7128

Title COUNTY SURVEYOR

County Surveyor's Comment _____



Prepared by
DJ SCRANTON SURVEYING
NOVATO, CA



DISTANCES in feet & decimals thereof easements not shown

TYPICAL: standard street monument of 9 RM 23