

SEP 24 1985

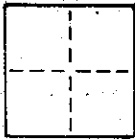
Marin County Public Works

CORNER RECORD

COUNTY OF MARIN T. _____ R. _____ MERIDIAN CALIFORNIA

CORNER TYPE: GOVT. CORNER MEANDER RANCHO CONTROL OTHER = SUBDIVISION

CORNER IDENTIFICATION - DATE OF VISIT SEPT. 20 1985



A.P. # ~~160-251-11~~
160-251-11

CORNER - LEFT AS FOUND FOUND AND TAGGED REESTABLISHED OBLITERATED CORNER REBUILT

PHYSICAL DESCRIPTION OF CORNER FOUND; EVIDENCE AND METHOD USED TO IDENTIFY OR REESTABLISH

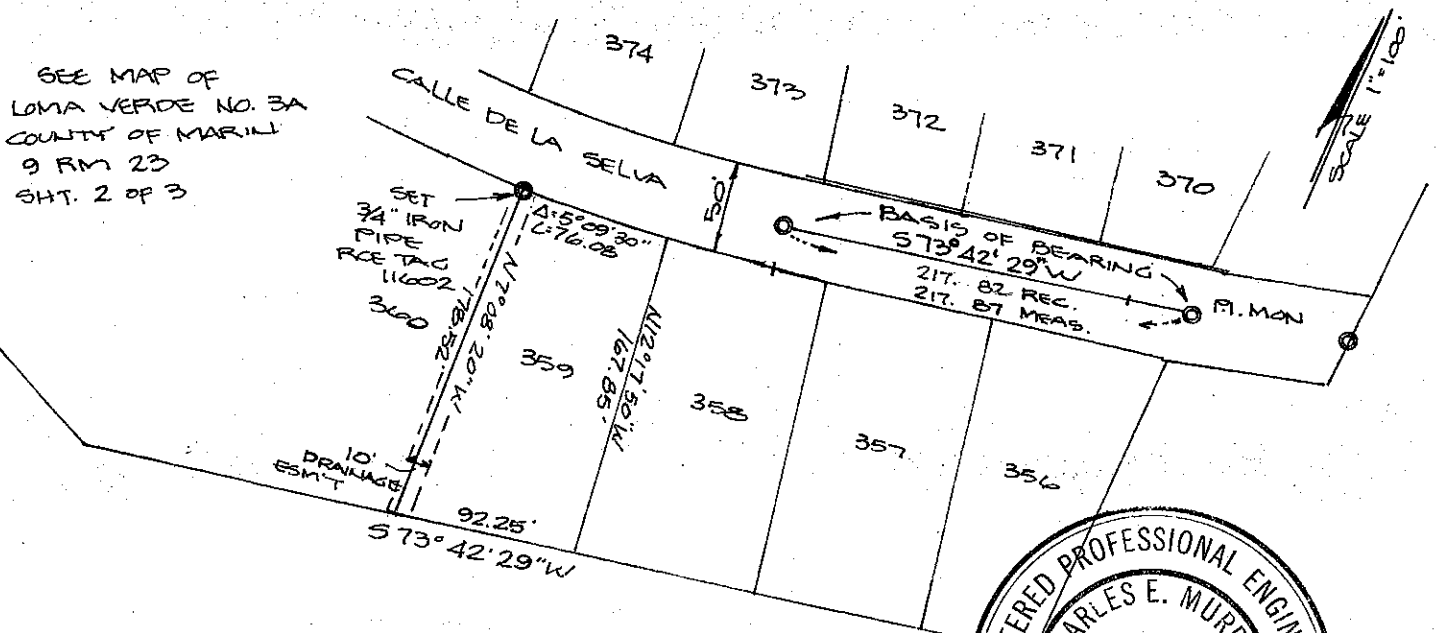
REESTABLISH NW CORNER OF LOT 359 AS SHOWN ON THE MAP OF LOMA VERDE NO. 3A (COUNTY OF MARIN), 9 RM 23, SHT 2 OF 3 MARIN CO. RECORDS. CORNER SET FROM RECORD MAP HOLDING TO EXISTING STREET MONUMENTS FOUND IN CALLE DE LA SELVA (SEE SKETCH BELOW)

PHYSICAL DESCRIPTION OF MONUMENTS, REBUILT OR PERPETUATED

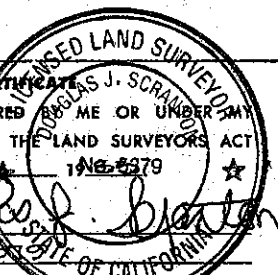
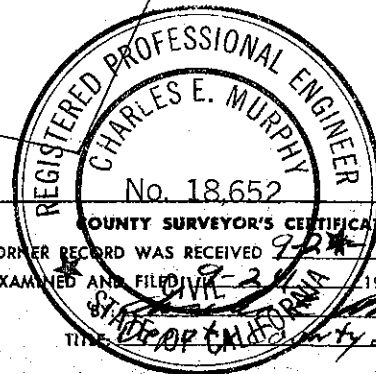
3/4" IRON PIPE WITH RCE TAG 11602 SET AT SAID NW CORNER OF LOT 359

CALIFORNIA COORDINATE SYSTEM ORDER: FIRST SECOND THIRD NOT APPLICABLE
STATIONS USED: NGS (USC & GS) STATE COUNTY OTHER STATION _____ STATION _____
ZONE _____ ELEVATION _____ NORTHINGS (Y) _____ EASTINGS (X) _____

SKETCH: (Include reference tie or witness points, remarks and topo of area)



SEE MAP OF LOMA VERDE NO. 3A COUNTY OF MARIN 9 RM 23 SHT. 2 OF 3



SURVEYOR'S CERTIFICATE
THIS CORNER RECORD WAS PREPARED BY ME OR UNDER MY DIRECTION IN CONFORMANCE WITH THE LAND SURVEYORS ACT ON SEPTEMBER 23 1985

SIGNED: Douglas J. Scrande
L.S. or R.C.E. No.: L.S. 18637

COUNTY SURVEYOR'S CERTIFICATE
THE CORNER RECORD WAS RECEIVED 9-23-85 1985 AND EXAMINED AND FILED IN 9-23-85 1985
TITLED DEPT. OF PUBLIC WORKS
COUNTY SURVEYOR

DOCUMENT No. _____
STATEMENT ON BACK OF SHEET YES NO