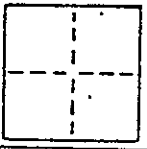


### CORNER RECORD

COUNTY OF MARIN T. \_\_\_\_\_ R. \_\_\_\_\_ MERIDIAN \_\_\_\_\_ CALIF.

CORNER TYPE: GOV'T. CORNER  MEANDER  RANCHO  CONTROL  OTHER

CORNER IDENTIFICATION — DATE OF VISIT JUNE 9, 1992



CORNER — LEFT AS FOUND  FOUND AND TAGGED  REESTABLISHED OBLITERATED CORNER  RESULT

PHYSICAL DESCRIPTION OF CORNER FOUND; EVIDENCE AND METHOD USED TO IDENTIFY OR REESTABLISH  
CENTERLINE STANDARD CITY MONUMENTS AS SHOWN ON  
9 RM 83, MARIN CO. RECORDS.

PHYSICAL DESCRIPTION OF MONUMENTS RESULT OR PERPETUATED

SET 3/4" IRON PIPES TAGGED P.L.S. 5296

AP No 160-184-12

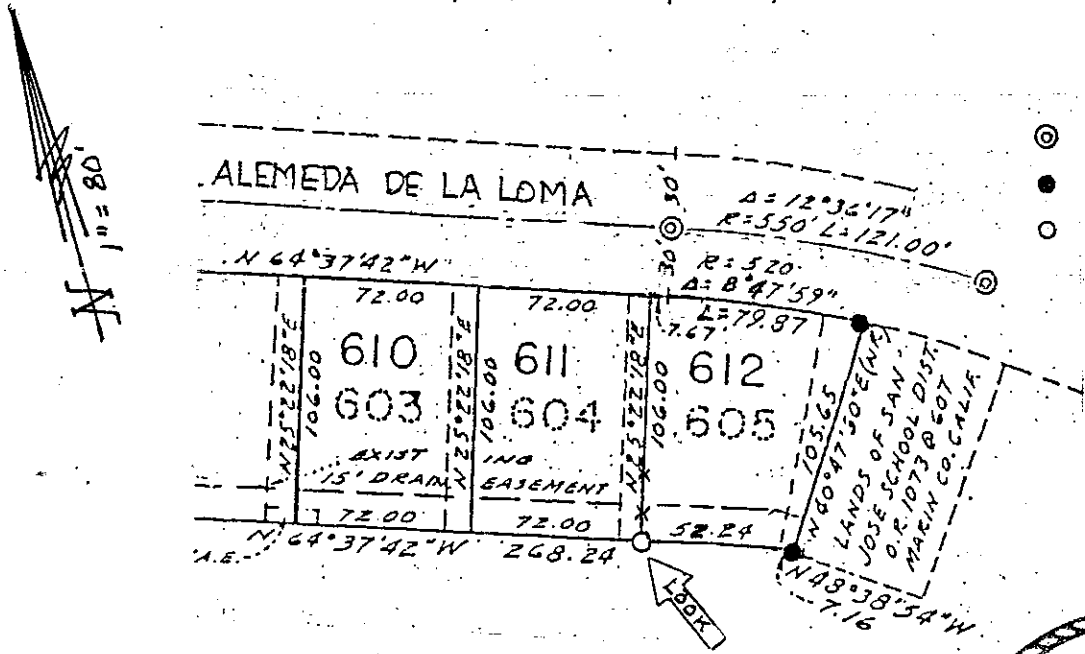
Novato

CALIFORNIA COORDINATE SYSTEM ORDER: FIRST  SECOND  THIRD

STATIONS USED: NGS (USC & OS)  STATE  COUNTY  OTHER  STATION \_\_\_\_\_ STATION \_\_\_\_\_

ZONE \_\_\_\_\_ ELEVATION \_\_\_\_\_ NORTHINGS (Y) \_\_\_\_\_ EASTINGS (X) \_\_\_\_\_

SKETCH: (Include reference tie or witness points, remarks and topo of area)



### LEGEND

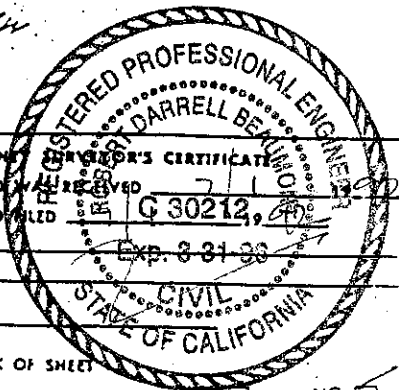
- ⊙ FND. STD. MON.
- FND. 3/4 I.P. LS 37.
- SET 3/4 I.P. P.L.S. 5296

**SURVEYOR'S CERTIFICATE**  
 THIS CORNER RECORD WAS PREPARED BY \_\_\_\_\_ UNDER MY  
 DIRECTION IN CONFORMANCE WITH THE LAND SURVEYORS ACT  
 ON JUNE 11, 1992 5296

SIGNED: [Signature]  
 L.S. or R.C.E. No. P.L.S. 5296

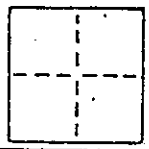


COUNTY \_\_\_\_\_ SURVEYOR'S CERTIFICATE NO. \_\_\_\_\_  
 THE CORNER RECORD WAS RECEIVED \_\_\_\_\_  
 AND EXAMINED AND FILED \_\_\_\_\_  
 BY: G 30212  
 TITLE: EXP. 3-31-93  
 DOCUMENT No. \_\_\_\_\_  
 STATEMENT ON BACK OF SHEET



# CORNER RECORD

COUNTY OF MARIN T. \_\_\_\_\_ R. \_\_\_\_\_ MERIDIAN \_\_\_\_\_ CALIFORNI  
 CORNER TYPE: GOV'T. CORNER  MEANDER  RANCHO  CONTROL  OTHER   
 CORNER IDENTIFICATION - DATE OF VISIT JUNE 9, 1992



CORNER - LEFT AS FOUND  FOUND AND TAGGED  REESTABLISHED OBLITERATED CORNER  REBUILT

PHYSICAL DESCRIPTION OF CORNER FOUND; EVIDENCE AND METHOD USED TO IDENTIFY OR REESTABLISH  
CENTERLINE STANDARD CITY MONUMENTS AS SHOWN ON  
9 RM 83, MARIN CO. RECORDS.

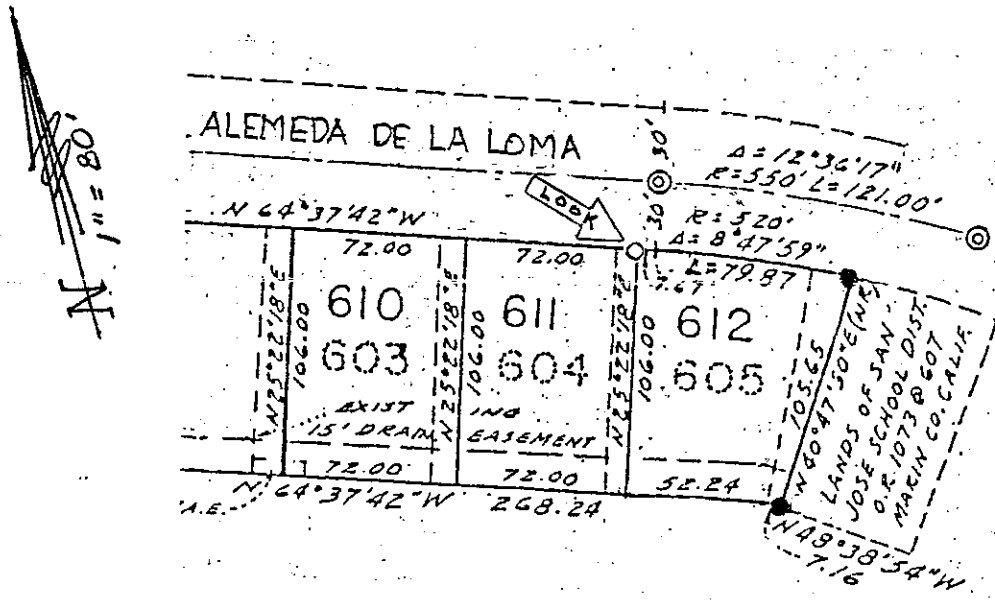
PHYSICAL DESCRIPTION OF MONUMENTS REBUILT OR PERPETUATED  
SET 3/4" IRON PIPES TAGGED P.L.S. 5296

APN# 160-184-12

Novato

CALIFORNIA COORDINATE SYSTEM ORDER: FIRST  SECOND  THIRD   
 STATIONS USED: NGS (USC & OS)  STATE  COUNTY  OTHER  STATION \_\_\_\_\_ STATION \_\_\_\_\_  
 ZONE \_\_\_\_\_ ELEVATION \_\_\_\_\_ NORTHINGS (Y) \_\_\_\_\_ EASTINGS (X) \_\_\_\_\_

SKETCH: (Include reference file or witness points, remarks and topo of area)



- ### LEGEND
- ⊙ FND. STD. MON.
  - FND. 3/4 I.P. L.S. 3T.
  - SET 3/4 I.P. P.L.S. 5296

**SURVEYOR'S CERTIFICATE**  
 THIS CORNER RECORD WAS PREPARED BY ME IN THE DIRECTION IN CONFORMANCE WITH THE LAWS OF THE STATE OF CALIFORNIA ON JUNE 11 1992.  
 SIGNED: [Signature] 5296  
 L.S. or R.C.E. No. P.L.S. 5296

**SEAL**  
 LICENSED LAND SURVEYOR  
 STATE OF CALIFORNIA

COUNTY SURVEYOR RECEIVED  
 THE CORNER RECORD WAS RECEIVED AND EXAMINED AND FILED IN THE PUBLIC RECORDS OFFICE OF THE COUNTY OF MARIN, CALIFORNIA, ON JUN 11 1992.  
 BY: [Signature]  
 TITLE: C 50212  
 DOCUMENT No. Exp. 3-31-98  
 STATEMENT ON BACK OF THIS RECORD IS TRUE AND CORRECT TO THE BEST OF MY KNOWLEDGE AND BELIEF.  
 STATE OF CALIFORNIA