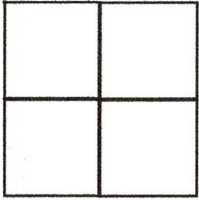


# CORNER RECORD

Agency Index CR22-129  
Document Number 160-123-02b  
County of Marin, California

City of Novato  
Brief Legal Description Lot 297, 10 RM 48



### CORNER TYPE

Government Corner  Control   
Meander  Property   
Rancho  Other

Date of Survey December 20, 2021

### COORDINATES (Optional)

N. \_\_\_\_\_ E. \_\_\_\_\_  
Elevation \_\_\_\_\_  
Units Metric  U.S. Survey Foot   
Horizontal Datum \_\_\_\_\_  
Zone \_\_\_\_\_ Epoch Date \_\_\_\_\_  
Vertical Datum \_\_\_\_\_

Complies with Public Resources Code §§8801-8819  
 Complies with Public Resources Code §§8890-8902

PLS Act Ref:  8765(d)  8771  8773  Other:

Corner/Monument:  Left as found  Established  Rebuilt  Pre-Construction  
 Found and tagged  Reestablished  Referenced  Post-Construction

Narrative of corner identified and monument as found, set, reset, replaced, or removed:  
 See sheet #2 for description (s):

### SURVEYOR'S STATEMENT

This Corner Record was prepared by me or under my direction in conformance with the Professional Land Surveyors' Act on January 3, 2022

Signed [Signature] P.L.S. or R.C.E. No. 6649



### COUNTY SURVEYOR'S STATEMENT

This Corner Record was received September 30, 2022

and examined and filed October 14, 2022

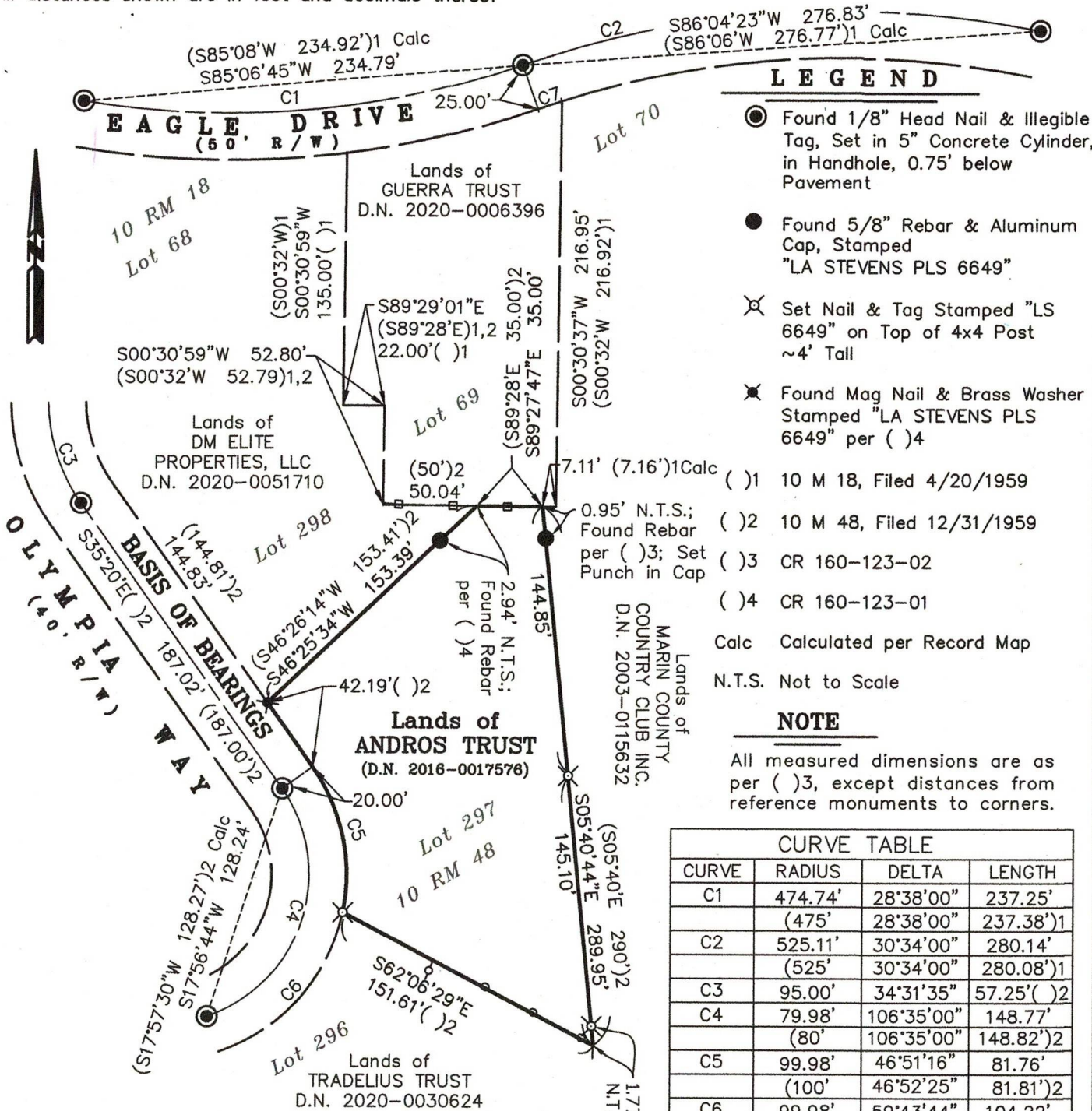
Signed T.W. Park P.L.S. [Redacted] No. 8176

Title County Surveyor



County Surveyor's Comment \_\_\_\_\_

All distances shown are in feet and decimals thereof



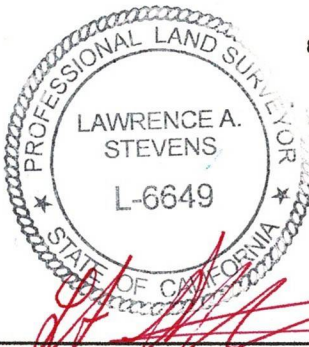
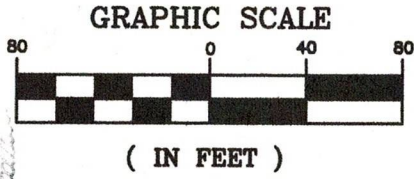
**LEGEND**

- Found 1/8" Head Nail & Illegible Tag, Set in 5" Concrete Cylinder, in Handhole, 0.75' below Pavement
  - Found 5/8" Rebar & Aluminum Cap, Stamped "LA STEVENS PLS 6649"
  - ⊗ Set Nail & Tag Stamped "LS 6649" on Top of 4x4 Post ~4' Tall
  - ⊗ Found Mag Nail & Brass Washer Stamped "LA STEVENS PLS 6649" per ( )<sup>4</sup>
- ( )<sup>1</sup> 10 M 18, Filed 4/20/1959  
 ( )<sup>2</sup> 10 M 48, Filed 12/31/1959  
 ( )<sup>3</sup> CR 160-123-02  
 ( )<sup>4</sup> CR 160-123-01
- Calc Calculated per Record Map  
 N.T.S. Not to Scale

**NOTE**

All measured dimensions are as per ( )<sup>3</sup>, except distances from reference monuments to corners.

CURVE TABLE			
CURVE	RADIUS	DELTA	LENGTH
C1	474.74'	28°38'00"	237.25'
	(475')	28°38'00"	237.38' <sup>1</sup>
C2	525.11'	30°34'00"	280.14'
	(525')	30°34'00"	280.08' <sup>1</sup>
C3	95.00'	34°31'35"	57.25' <sup>( )2</sup>
C4	79.98'	106°35'00"	148.77'
	(80')	106°35'00"	148.82' <sup>2</sup>
C5	99.98'	46°51'16"	81.76'
	(100')	46°52'25"	81.81' <sup>2</sup>
C6	99.98'	59°43'44"	104.22'
	(100')	59°42'35"	104.21' <sup>2</sup>
C7	500.11'	1°31'44"	13.35'
	(500')	1°31'44"	13.34' <sup>1</sup>



**Corner Record**  
**Lands of Andros Trust**  
 (Lot 297, 10 RM 48)  
 City of Novato

Marin County  
 Scale: 1" = 80'  
**L.A. Stevens & Associates, Inc.**  
 Professional Land Surveyors \* (415) 382-7713  
 7 Commercial Blvd., Suite 1 \* Novato, CA 94949

California  
 October 2016<sup>2022</sup>

Lawrence A. Stevens, PLS 6649