

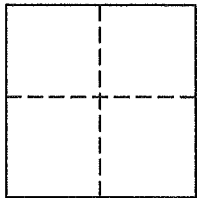
Lands of Andros Trust
Job #: 161778

CORNER RECORD

Document Number 160-123-02

City of Novato, County of Marin, California

Brief Legal Description: Lot 297, as shown upon that certain map entitled, "Marin Golf and Country Club Estates, Unit No. 4, Marin County, California", filed for record December 31, 1968, in Volume 10 of Maps, at Page 48, Marin County Records.



CORNER TYPE

COORDINATES (Optional)

Government Corner Control
Meander Property
Rancho Other

N _____
E _____
Zone _____ NAD27 NAD83
NAD 83 Epoch _____
Elev. _____
Vert. Datum: NGVD29 NAVD88
Meas. Units: Metric Imperial

Date of Survey August 9, 2016

Corner - Left as found Found and tagged Established Reestablished Rebuilt

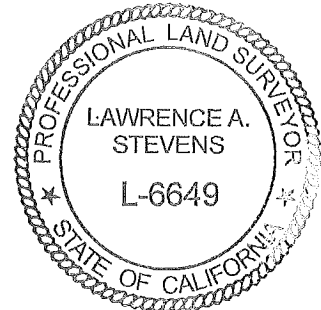
Identification and type of corner found: Evidence used to identify or procedure used to establish or reestablish the corner:
See Page 2 of 2 for information

A description of the physical condition of the monument as found and as set or reset:
See Page 2 of 2 for information

SURVEYOR'S STATEMENT

This Corner Record was prepared by me or under my direction in conformance with
The Land Surveyor's Act on October 13, 2016.

Signed [Signature] P.L.S. 6649



COUNTY SURVEYOR'S STATEMENT

This Corner Record was received OCTOBER 25, 2016

and examined and filed 1/18/2017

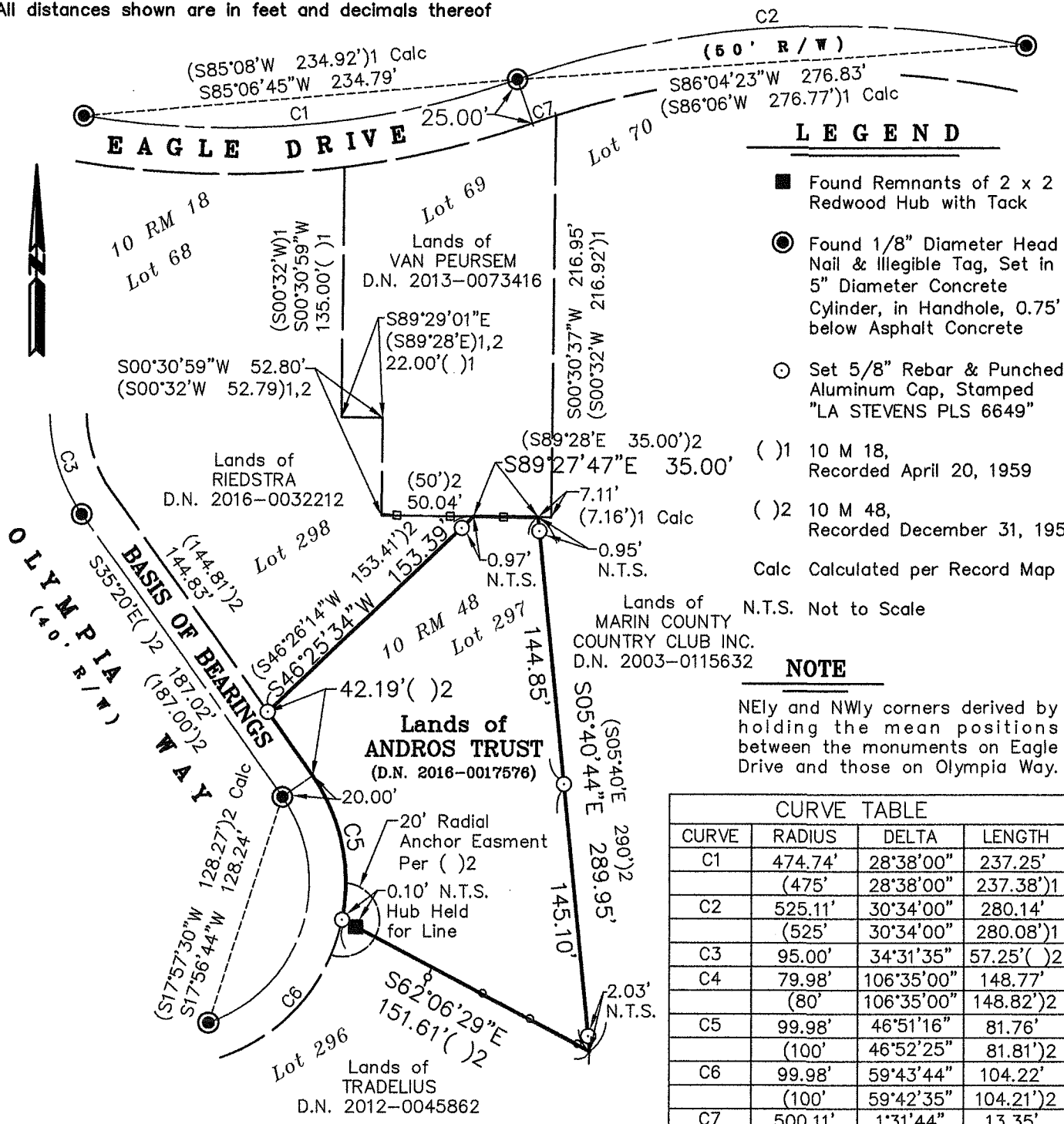
Signed T.W. Park P.L.S. or R.C.E. No. 8176

Title COUNTY SURVEYOR

County Surveyors' Comment _____



All distances shown are in feet and decimals thereof



LEGEND

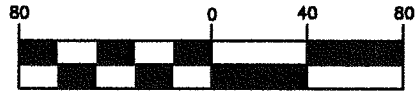
- Found Remnants of 2 x 2 Redwood Hub with Tack
 - Found 1/8" Diameter Head Nail & Illegible Tag, Set in 5" Diameter Concrete Cylinder, in Handhole, 0.75' below Asphalt Concrete
 - Set 5/8" Rebar & Punched Aluminum Cap, Stamped "LA STEVENS PLS 6649"
- () 1 10 M 18, Recorded April 20, 1959
 () 2 10 M 48, Recorded December 31, 1959
 Calc Calculated per Record Map
 N.T.S. Not to Scale

NOTE

NEly and NWly corners derived by holding the mean positions between the monuments on Eagle Drive and those on Olympia Way.

CURVE TABLE			
CURVE	RADIUS	DELTA	LENGTH
C1	474.74'	28°38'00"	237.25'
	(475')	28°38'00"	237.38')1
C2	525.11'	30°34'00"	280.14'
	(525')	30°34'00"	280.08')1
C3	95.00'	34°31'35"	57.25' () 2
C4	79.98'	106°35'00"	148.77'
	(80')	106°35'00"	148.82')2
C5	99.98'	46°51'16"	81.76'
	(100')	46°52'25"	81.81')2
C6	99.98'	59°43'44"	104.22'
	(100')	59°42'35"	104.21')2
C7	500.11'	1°31'44"	13.35'
	(500')	1°31'44"	13.34')1

GRAPHIC SCALE



(IN FEET)



**Corner Record
Lands of Andros**

(Lot 297, 10 RM 48)

Novato Marin County California
 Scale: 1" = 80' October 2016

L.A. Stevens & Associates, Inc.

Professional Land Surveyors * (415) 382-7713
 7 Commercial Blvd., Suite 1 * Novato, CA 94949

Lawrence A. Stevens, PLS 6649