

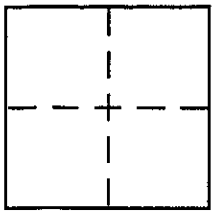
CORNER RECORD

Document Number 160-112-20

City of NOVATO

County of MARIN, California

Brief Legal Description LOT 93 MARIN GOLF & CC ESTATES (10 RM 18)



CORNER TYPE

Government Corner  Control   
Meander  Property   
Rancho  Other   
Date of Survey 2/14/2001

COORDINATES (Optional)

N. \_\_\_\_\_  
E. \_\_\_\_\_  
Zone \_\_\_\_\_ NAD27  NAD83   
NAD83 Epoch \_\_\_\_\_  
Elev. \_\_\_\_\_  
Vert. Datum: NGVD29  NAVD88   
Meas. Units: Metric  Imperial

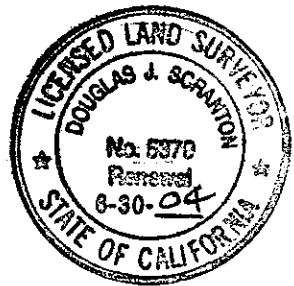
Corner - Left as found  Found and tagged  Established  Reestablished  Rebuilt

Identification and type of corner found: Evidence used to identify or procedure used to establish or reestablish the corner:  
SET EXTERIOR CORNERS TO LOT 93 OF MARIN GOLF & CC ESTATES (10 RM 18). POINTS WERE ESTABLISHED FROM EXISTING STANDARD STREET MONUMENT ON BOGEY LANE AS SHOWN UPON THE MAP OF RECORD. SEE SKETCH ON REVERSE SIDE FOR DETAILS.

A description of the physical condition of the monument as found and as set or reset:  
SET 3/4" IRON PIPE WITH US TAG 5379 AFFIXED TO TOP. PIPE DRIVEN FLUSH WITH SURROUNDING NATURAL GROUND GRADE. ALSO SET LEAD PLUG IN CONCRETE WITH BRASS US TAG 5379 & NAIL ON THE COURSE N 23° 33' W, 80.61' FROM THE FRONT LOT CORNER. SEE SKETCH FOR DETAILS

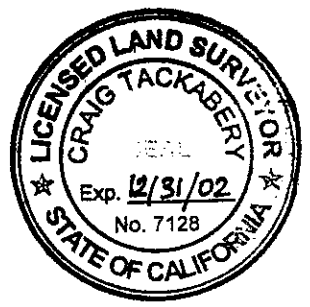
SURVEYOR'S STATEMENT

This Corner Record was prepared by me or under my direction in conformance with the Land Surveyor's Act on MARCH 1 2001  
Signed [Signature] P.L.S or R.C.E. No. PLS 5379  
Renewal 6.30.04



COUNTY SURVEYOR'S STATEMENT

This Corner Record was received MARCH 5, 2001  
and examined and filed MARCH 8, 2001  
Signed [Signature] P.L.S or R.C.E. No. 7128  
Title Deputy



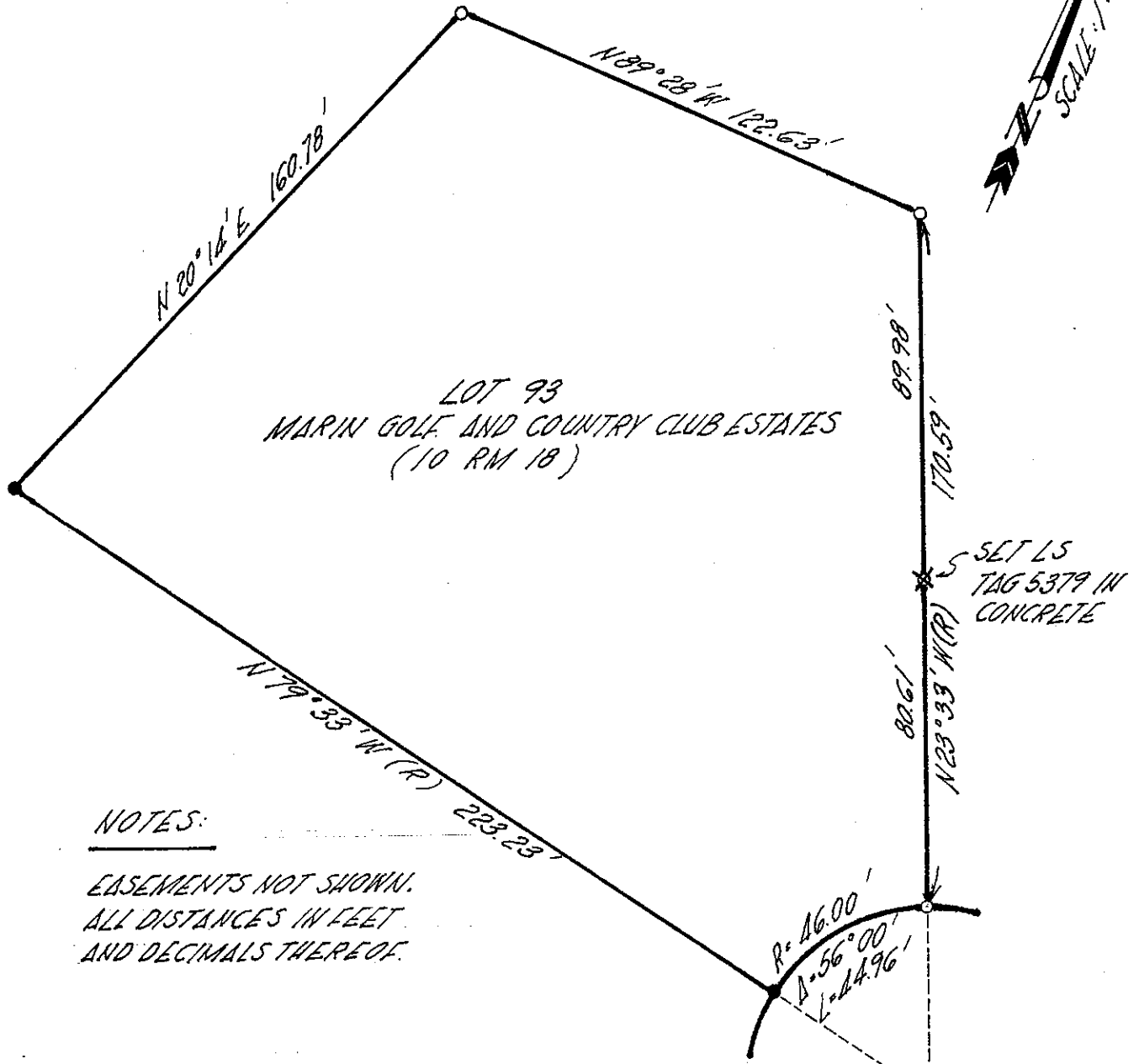
County Surveyor's Comment \_\_\_\_\_

845 OLIVE AVE NOVATO, CA  
DJ SCRANTON SURVEYING

JN 10110

**BASIS OF BEARING**

TAKEN AS SOUTH 76°55'56" WEST BETWEEN EXISTING MONUMENTS ON THE CENTERLINE OF COUNTRY CLUB DRIVE AS DEPICTED UPON THE MAP OF MARIN GOLF AND COUNTRY CLUB ESTATES UNIT ONE, 10 RM 6, OPPOSITE LOTS 34 & 36, ON SHEET THREE OF THREE, WITH A MONUMENT DISTANCE OF 242.00 FEET BETWEEN THE TWO SAID RECORD MONUMENTS.



**NOTES:**

EASEMENTS NOT SHOWN.  
ALL DISTANCES IN FEET  
AND DECIMALS THEREOF.

**LEGEND**

- SET 3/4" IRON PIPE  
LS 5379 TAG
- FOUND 1/2" REBAR LS 5379  
TAG PER PREVIOUS CORNER  
RECORD.
- (R) RADIAL BEARING