

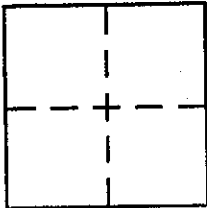
**CORNER RECORD**

Document Number APN. 160-112-15

City of NOVATO

County of MARIN, California

Brief Legal Description LOT 88, MAP OF MARIN GOLF & COUNTRY CLUB ESTATES, UNIT #2  
10 RM 18



**CORNER TYPE**

- Government Corner  Control
- Meander  Property
- Rancho  Other
- Date of Survey \_\_\_\_\_

**COORDINATES (Optional)**

- N. \_\_\_\_\_
- E. \_\_\_\_\_
- Zone \_\_\_\_\_ NAD27  NAD83
- NAD83 Epoch \_\_\_\_\_
- Elev. \_\_\_\_\_
- Vert. Datum: NGVD29  NAVD88
- Meas. Units: Metric  Imperial

Corner - Left as found  Found and tagged  Established  Reestablished  Rebuilt

Identification and type of corner found: Evidence used to identify or procedure used to establish or reestablish the corner:  
FOUND STREET MONUMENTS AS PER RECORD MAP  
(10 RM 18)

A description of the physical condition of the monument as found and as set or reset:  
SET 3/4" IRON PIPES W/ PLASTIC CAPS, RCE 30465  
1/2 SET NAIL & TAG, RCE 30465

**SURVEYOR'S STATEMENT**

This Corner Record was prepared by me or under my direction in conformance with the Land Surveyor's Act on 5/21/03

Signed [Signature] P.L.S or R.C.E. No. 30465



**COUNTY SURVEYOR'S STATEMENT**

This Corner Record was received 5/27/03

and examined and filed 6/2/2003

Signed [Signature] P.L.S or R.C.E. No. 7128

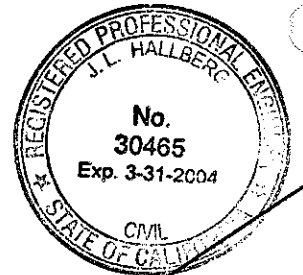
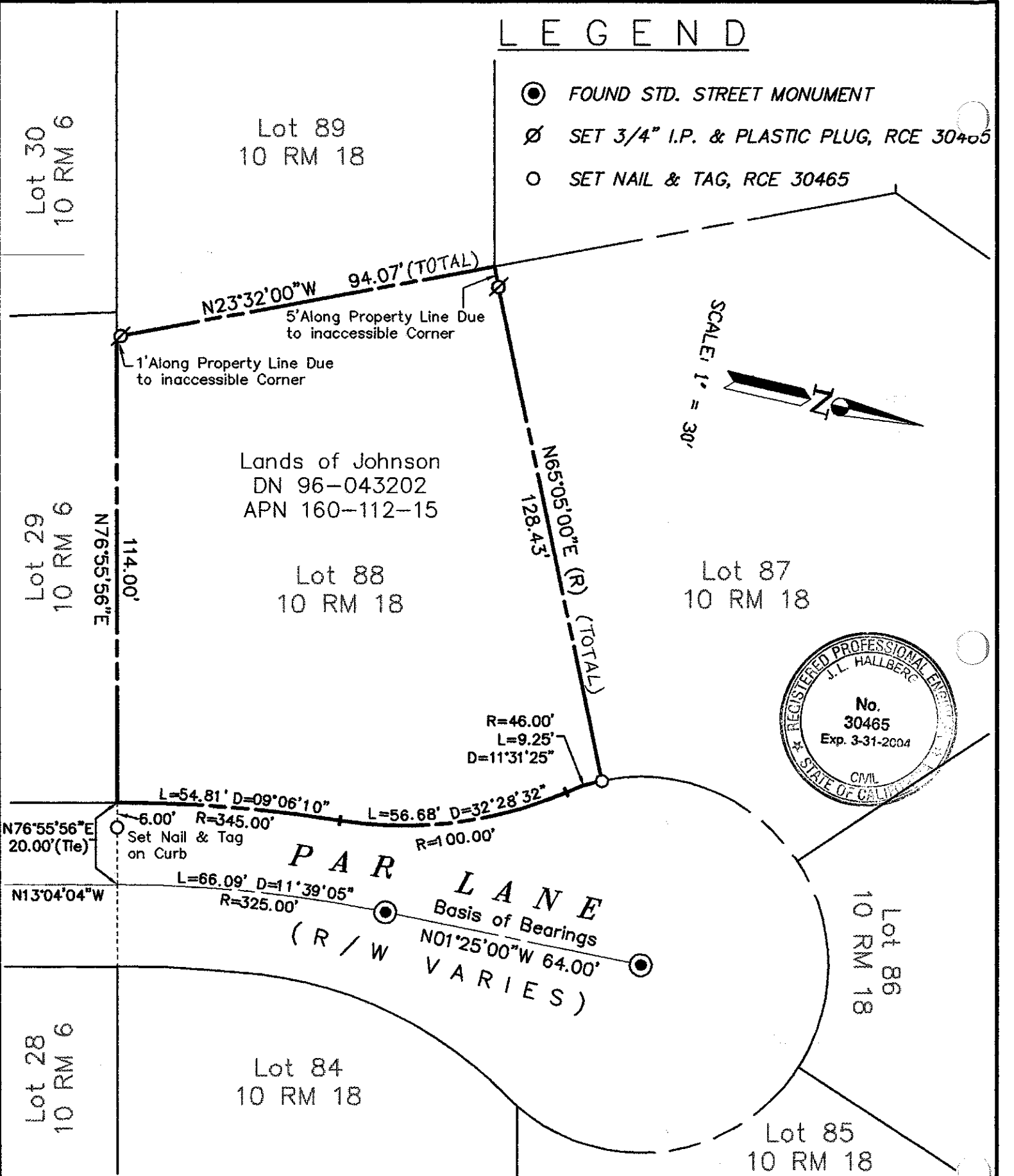
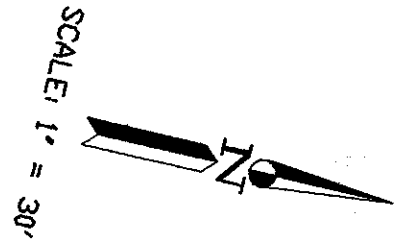
Title COUNTY SURVEYOR



County Surveyor's Comment \_\_\_\_\_

# LEGEND

- ⊙ FOUND STD. STREET MONUMENT
- ∅ SET 3/4" I.P. & PLASTIC PLUG, RCE 30405
- SET NAIL & TAG, RCE 30465



SHEET	1	OF	1
SCALE:	1" = 30'	DESIGN:	KMT
DATE:	05-21-03	DRAWN:	KMT
FILE:	2003-090	CHECKED:	J.L.H
G:\Drawings\2003\2003-090\CorRec.dwg			

**J.L. ENGINEERING**  
 CIVIL ENGINEERS—LAND SURVEYORS  
 1539 4th ST., SAN RAFAEL, CA. 94901 (415) 457-8647

## Corner Record

Lands of Johnson - 35 Par Lane  
 APN 160-112-18, Novato, Marin County, CA