

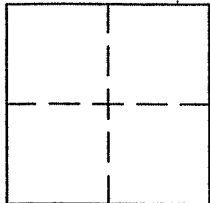
# CORNER RECORD

Document Number APN 160-111-08

City of NOVATO

County of MARIN, California

Brief Legal Description LOT 60, 10 RM 18



### CORNER TYPE

Government Corner  Control   
 Meander  Property   
 Rancho  Other   
 Date of Survey 5-21-10

### COORDINATES (Optional)

N. \_\_\_\_\_  
 E. \_\_\_\_\_  
 Zone \_\_\_\_\_ NAD27  NAD83   
 NAD83 Epoch \_\_\_\_\_  
 Elev. \_\_\_\_\_  
 Vert. Datum: NGVD29  NAVD88   
 Meas. Units: Metric  Imperial

Corner - Left as found  Found and tagged  Established  Reestablished  Rebuilt

Identification and type of corner found: Evidence used to identify or procedure used to establish or reestablish the corner:

FOUND STANDARD STREET MONUMENTS AS SHOWN ON 10 RM 18 AND ON REVERSE

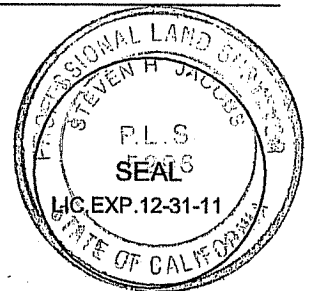
A description of the physical condition of the monument as found and as set or reset: \_\_\_\_\_

SET REBAR & CAPS, PLS 5296 AND SET HUB & TAG LINE POINT, PLS 5296, AS SHOWN ON EREVERSE

### SURVEYOR'S STATEMENT

This Corner record was prepared by me or under my direction in conformance with the Land Surveyor's Act of \_\_\_\_\_ JUNE 7, 2010 \_\_\_\_\_

Signed *Steven H. Jacobs* P.L.S. or R.C.E. No. PLS 5296



### COUNTY SURVEYOR'S STATEMENT

This Corner Record was received SEPTEMBER 13, 2010

and examined and filed NOVEMBER 3, 2010

Signed *Craig Tackabery* P.L.S. or R.C.E. No. 7128

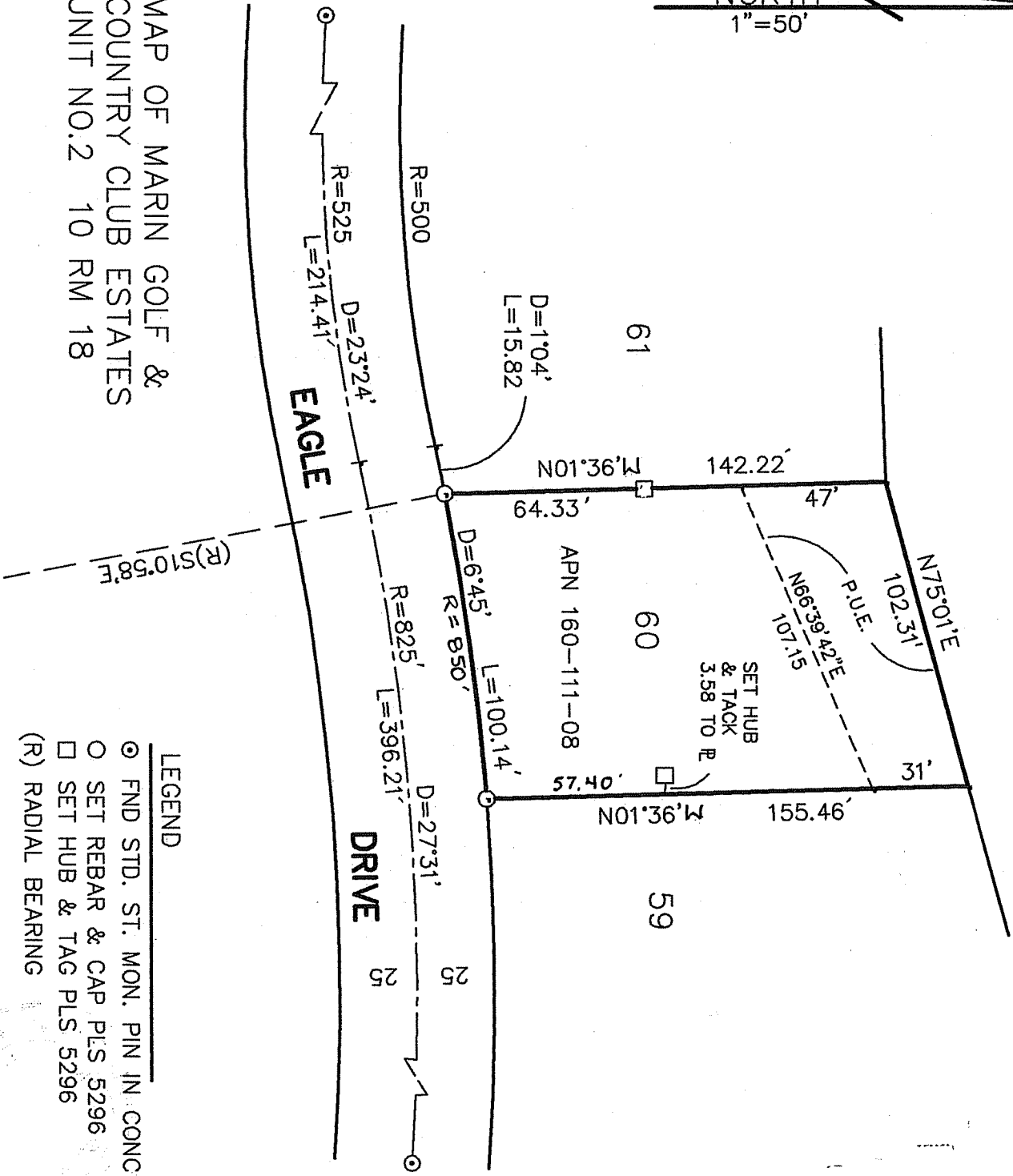
Title COUNTY SURVEYOR



County Surveyor's Comment \_\_\_\_\_

NORTH  
1"=50'

MAP OF MARIN GOLF &  
COUNTRY CLUB ESTATES  
UNIT NO.2 10 RM 18



- LEGEND
- FND STD. ST. MON. PIN IN CONC
  - SET REBAR & CAP PLS 5296
  - SET HUB & TAG PLS 5296
  - (R) RADIAL BEARING