

L. A. Stevens & Associates, Inc.
Professional Land Surveyors
Novato, California

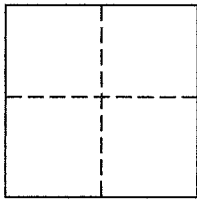
Lands of Morgenlaender
Job #: 151684

CORNER RECORD

Document Number 160-092-07

Town of Novato in County of Marin, California

Brief Legal Description: Being a Lot 6, per "Map of Marin Golf & Country Club Estates Unit No. One" filed in Volume 10 of Maps, at Page 6, Marin County Records.



CORNER TYPE

COORDINATES (Optional)

Government Corner Control

N _____

Meander Property

E _____

Zone _____ NAD27 NAD83

Rancho Other

NAD 83 Epoch _____

Elev. _____

Vert. Datum: NGVD29 NAVD88

Date of Survey August 25, 2015

Meas. Units: Metric Imperial

Corner - Left as found Found and tagged Established Reestablished Rebuilt

Identification and type of corner found: Evidence used to identify or procedure used to establish or reestablish the corner:
See Page 2 of 2 for additional information

A description of the physical condition of the monument as found and as set or reset:
See Page 2 of 2 for additional information

SURVEYOR'S STATEMENT

This Corner Record was prepared by me or under my direction in conformance with
The Land Surveyor's Act on January 6, 2016.

Signed [Signature] P.L.S. 6649



COUNTY SURVEYOR'S STATEMENT

This Corner Record was received NOVEMBER 19, 2015

and examined and filed MARCH 11, 2016

Signed [Signature] P.L.S. or-R.C.E. No. 7821

Title County Surveyor

County Surveyors' Comment _____

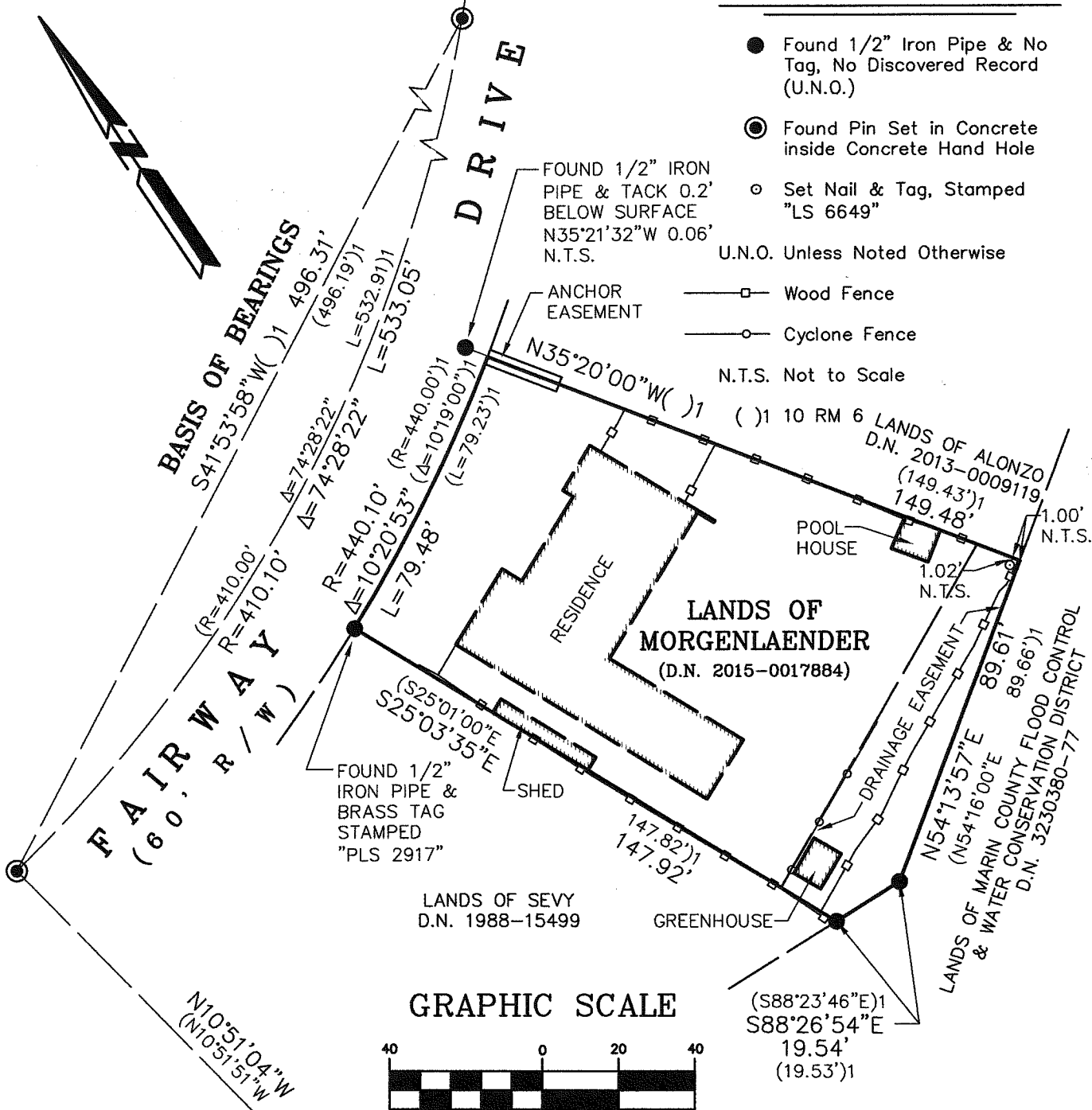


All distances shown are in feet and decimals thereof

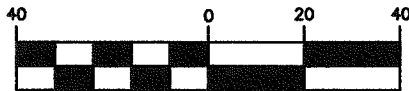
LEGEND

- Found 1/2" Iron Pipe & No Tag, No Discovered Record (U.N.O.)
- ⊙ Found Pin Set in Concrete inside Concrete Hand Hole
- Set Nail & Tag, Stamped "LS 6649"
- U.N.O. Unless Noted Otherwise

- Wood Fence
- Cyclone Fence
- N.T.S. Not to Scale



GRAPHIC SCALE



(IN FEET)

Corner Record Lands of Morgenlaender

(Lot 6, 10 RM 6)

Novato Marin County California
 Scale: 1" = 40' January 2016

L.A. Stevens & Associates, Inc.

Professional Land Surveyors * (415) 382-7713
 7 Commercial Blvd., Suite 1 * Novato, CA 94949



Lawrence A. Stevens, PLS 6649