

L. A. Stevens & Associates, Inc.  
Professional Land Surveyors  
Novato, California

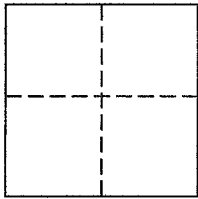
**Lands of Morganlaender**  
**Job #: 151684**

**CORNER RECORD**

Document Number 160-092-07

Town of Novato in County of Marin, California

Brief Legal Description: Being a Lot 6, per "Map of Marin Golf & Country Club Estates Unit No. One" filed in Volume 10 of Maps, at Page 6, Marin County Records.



**CORNER TYPE**

Government Corner  Control   
Meander  Property   
Rancho  Other

Date of Survey August 25, 2015

**COORDINATES (Optional)**

N \_\_\_\_\_  
E \_\_\_\_\_  
Zone \_\_\_\_\_ NAD27  NAD83   
NAD 83 Epoch \_\_\_\_\_  
Elev. \_\_\_\_\_  
Vert. Datum: NGVD29  NAVD88   
Meas. Units: Metric  Imperial

**Corner -** Left as found  Found and tagged  Established  Reestablished  Rebuilt

Identification and type of corner found: Evidence used to identify or procedure used to establish or reestablish the corner:  
See Page 2 of 2 for additional information

A description of the physical condition of the monument as found and as set or reset:  
See Page 2 of 2 for additional information

**SURVEYOR'S STATEMENT**

This Corner Record was prepared by me or under my direction in conformance with  
The Land Surveyor's Act on January 6, 2016.

Signed [Signature] P.L.S. 6649



**COUNTY SURVEYOR'S STATEMENT**

This Corner Record was received NOVEMBER 19, 2015

and examined and filed JANUARY 22, 2016

Signed [Signature] P.L.S. or R.C.E. No. 7821

Title County Surveyor

County Surveyors' Comment \_\_\_\_\_



All distances shown are in feet and decimals thereof

# LEGEND

● Found 1/2" Iron Pipe & No Tag, No Discovered Record (U.N.O.)

⊙ Found Pin Set in Concrete inside Concrete Hand Hole

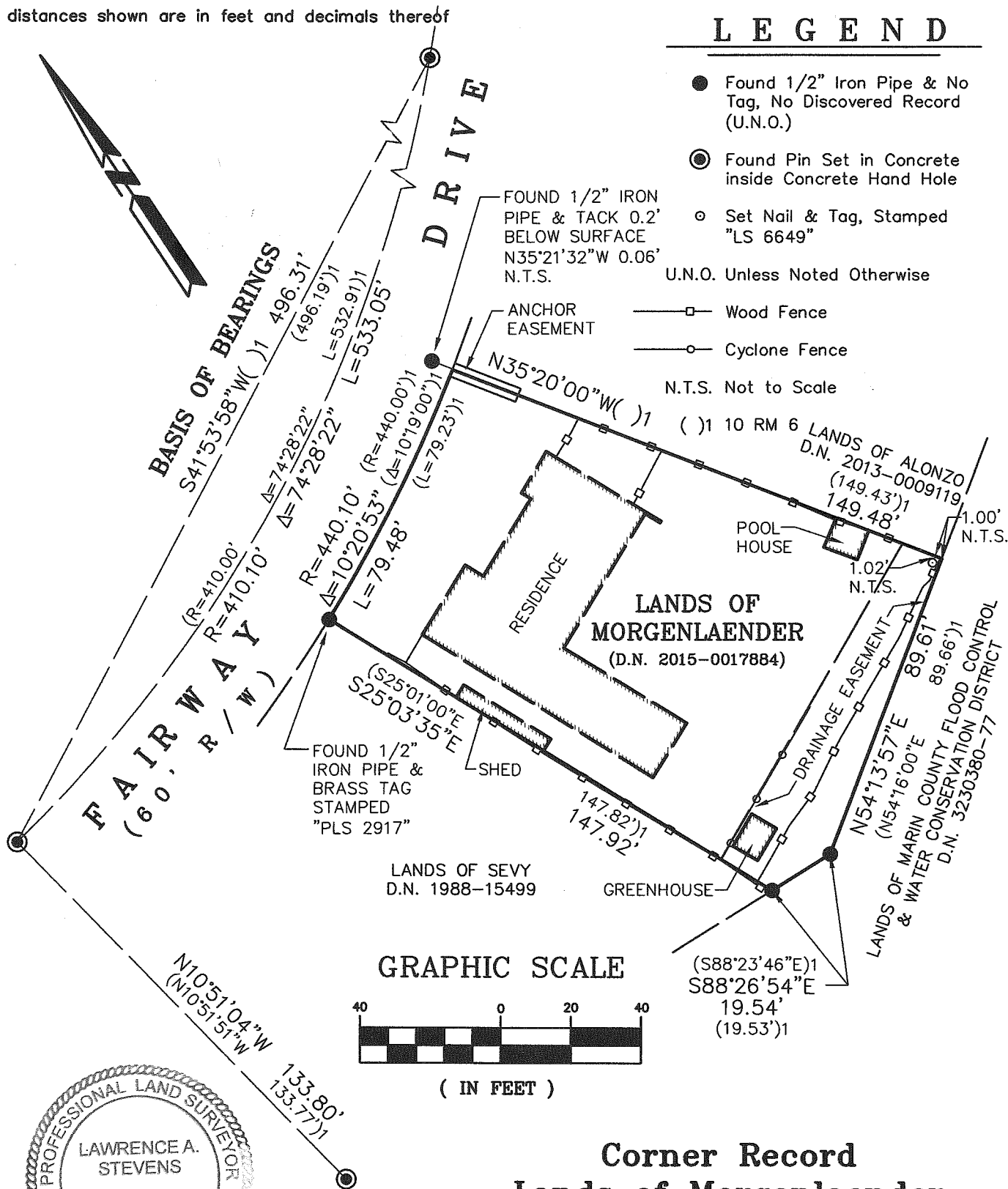
○ Set Nail & Tag, Stamped "LS 6649"

U.N.O. Unless Noted Otherwise

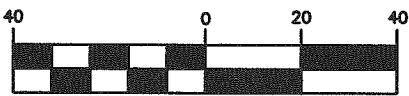
—□— Wood Fence

—○— Cyclone Fence

N.T.S. Not to Scale



## GRAPHIC SCALE



( IN FEET )



## Corner Record Lands of Morgenlaender

(Lot 6, 10 RM 6)

Novato Marin County California  
Scale: 1" = 40' January 2016

**L.A. Stevens & Associates, Inc.**

Professional Land Surveyors \* (415) 382-7713  
7 Commercial Blvd., Suite 1 \* Novato, CA 94949

Lawrence A. Stevens, PLS 6649