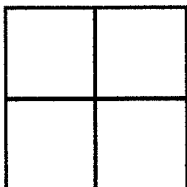


CORNER RECORD

Agency Index 21-114
Document Number 160-083-37

City of Unincorporated; Vicinity of Novato County of MARIN, California
Brief Legal Description N'y, E'y, & S'y lines of Lot 708 per 9 RM 93, "Map of Loma Verde No. 5", M.C.R.



CORNER TYPE

Government Corner Control
Meander Property
Rancho Other

Date of Survey 8/17/2021

COORDINATES (Optional)

N. _____ E. _____
Elevation _____
Units Metric U.S. Survey Foot
Horizontal Datum _____
Zone _____ Epoch Date _____
Vertical Datum _____

Complies with Public Resources Code §§8801-8819
 Complies with Public Resources Code §§8890-8902

PLS Act Ref: 8765(d) 8771 8773 Other:
Corner/Monument: Left as found Established Rebuilt Pre-Construction
 Found and tagged Reestablished Referenced Post-Construction

Narrative of corner identified and monument as found, set, reset, replaced, or removed:

Rear corners were established at the mean position of two resolutions. The first resolution was derived by holding Monuments A & B on Via Escondida. The second resolution was derived using Monuments C & D on Corte Colina. The difference between the two resolutions was S37°34'45"W 0.43' at the SW corner & S29°18'10"W 0.41' at the SE corner. The mean position of these two resolutions was used.

SURVEYOR'S STATEMENT

This Corner Record was prepared by me or under my direction in conformance with the Professional Land Surveyors' Act on August 27, 2021
Signed [Signature] P.L.S. or R.C.E. No. 6649



COUNTY SURVEYOR'S STATEMENT

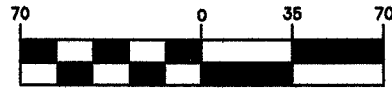
This Corner Record was received 9.8.21
and examined and filed NOV. 03, 2021
Signed [Signature] P.L.S. or R.C.E. No. 9292
Title DEPUTY



County Surveyor's Comment _____

All distances shown are in feet and decimals thereof.

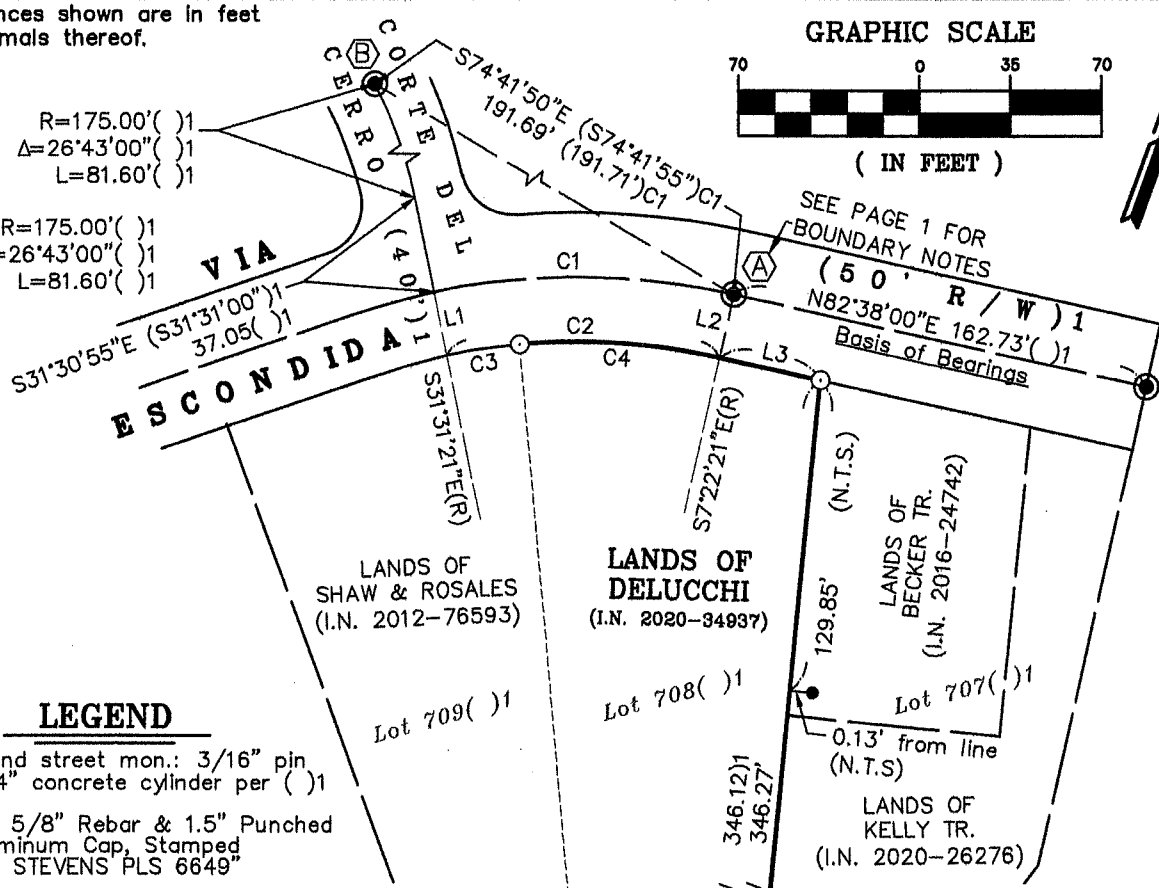
GRAPHIC SCALE



(IN FEET)

$R=175.00'$ () 1
 $\Delta=26^{\circ}43'00''$ () 1
 $L=81.60'$ () 1

 $R=175.00'$ () 1
 $\Delta=26^{\circ}43'00''$ () 1
 $L=81.60'$ () 1

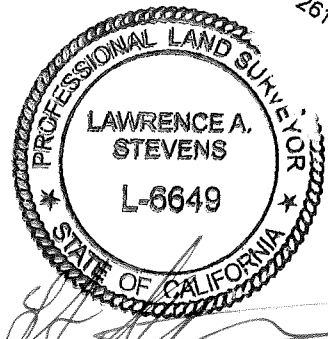


LEGEND

- Found street mon.: 3/16" pin in 4" concrete cylinder per () 1
- Set 5/8" Rebar & 1.5" Punched Aluminum Cap, Stamped "LA STEVENS PLS 6649"
- Found 1" iron pipe with wooden plug and tag stamped "RCE 9798", provenance unknown
- () 1 9 RM 93, "Map of Loma Verde No. 5", filed November 29, 1957
- C1 Calculated per () 1
- (R) Radial bearing

LINES AND CURVES

- L1 $S31^{\circ}31'21''E$ (S31'31'00"E)1 (R) 25.00' () 1
- L2 $S7^{\circ}22'21''E$ (S7'22'00"E)1 (R) 25.00' () 1
- L3 $S82^{\circ}38'00''W$ 39.79' () 1
- C1 $L=115.89'$ (115.91')1 $\Delta=24^{\circ}09'00''$ () 1
 $R=274.95'$ (275.00')1
- C2 $L=105.35'$ (105.37')1 $\Delta=24^{\circ}09'00''$ () 1
 $R=249.95'$ (250.00')1
- C3 $L=78.92'$ (78.94')1 $\Delta=17^{\circ}38'00''$ () 1
 $R=249.95'$ (250.00')1
- C4 $L=28.43'$ () C1 $\Delta=6^{\circ}31'00''$ () C1
 $R=249.95'$ (250.00')1



**CORNER RECORD
LANDS OF DELUCCHI**

(N'y, E'y, & S'y Lines of Lot 708, 9 RM 93)

NOVATO MARIN COUNTY CALIFORNIA
SCALE: 1" = 70' AUGUST 27, 2021

L.A. Stevens & Associates, Inc.
Professional Land Surveyors * (415) 382-7713
7 Commercial Blvd., Suite 1 * Novato, CA 94949

Lawrence A. Stevens, PLS 6649

Copyright © Lawrence A. Stevens 2021

Job # 212145