

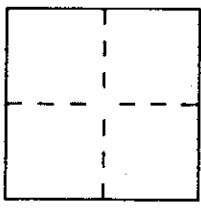
CORNER RECORD

Document Number A.P.N. 160-071-12

City of NOVATO

County of MARIN, California

Brief Legal Description LOT 74B, PER 9 R.M. 93



CORNER TYPE

Government Corner Control
Meander Property
Rancho Other
Date of Survey JUNE 16, 1997

COORDINATES (Optional)

N. _____
E. _____
Zone _____ Datum _____
Elev. _____

Corner — Left as found Found and tagged Established Reestablished Rebuilt

Identification and type of corner found: Evidence used to identify or procedure used to establish or reestablish the corner:

- SEE OVER -

A description of the physical condition of the monument as found and as set or reset:

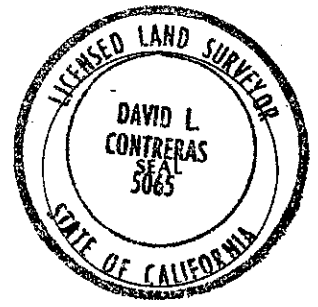
- SEE OVER -

SURVEYOR'S STATEMENT

This Corner Record was prepared by me or under my direction in conformance with

the Land Surveyors' Act on SEPT 28 1997

Signed David Contreras L.S. or R.C.E. Number LS 5065



COUNTY SURVEYOR'S STATEMENT

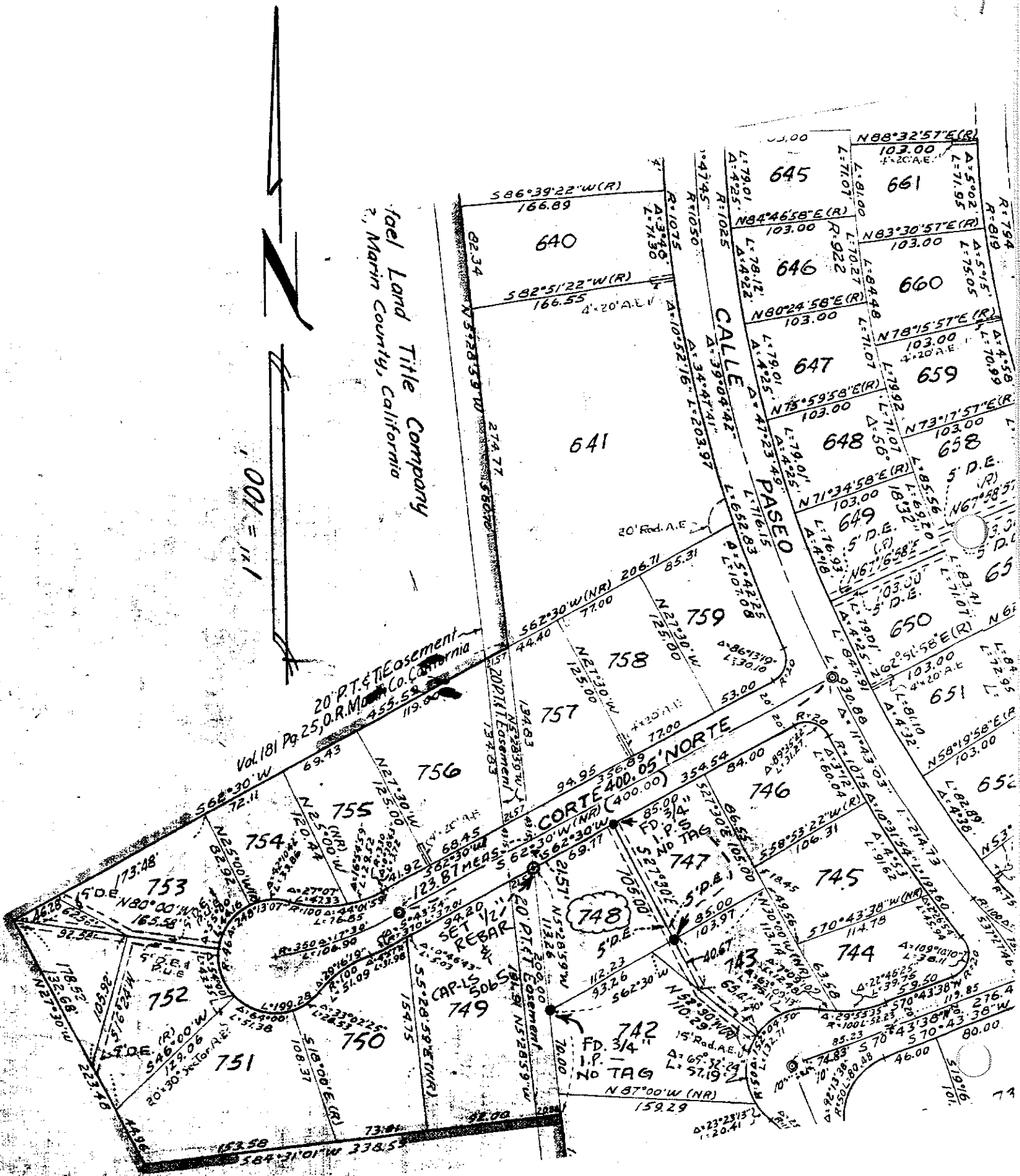
This Corner Record was received October 2 1997 and examined

and filed October 3 1997.

Signed John M. Wooley Title Deputy



County Surveyor's Comment _____



Real Land Title Company
 2, Martin County, California

1" = 100'

20 FT. EASEMENT
 Vol. 181 Pg. 25, D.R. M... Co. California
 455.52
 119.62

REBAR
 CAPLS
 5065
 749

CORTE NORTE
 400.05' (400.00)
 85.00
 103.97

PASADO
 CALLE

