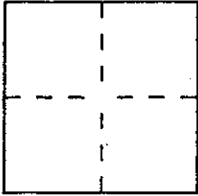


CORNER RECORD

Document Number _____

City of NOVATO AREA County of MARIN, California

Br: Legal Description LOT 757, LOMA VERDE NO. 5, 9 R.M. 93



CORNER TYPE

Government Corner Control
 Meander Property
 Rancho Other
 Date of Survey 8-29-94

COORDINATES (Optional)

N. _____
 E. _____
 Zone _____ Datum _____
 Elev. _____

Corner — Left as found Found and tagged Established Reestablished Rebuilt

Identification and type of corner found: Evidence used to identify or procedure used to establish or reestablish the corner:

OVER

A description of the physical condition of the monument as found and as set or reset:

OVER

SURVEYOR'S STATEMENT

This Corner Record was prepared by me or under my direction in conformance with the Land Surveyors' Act on SEPTEMBER 20 19 94.

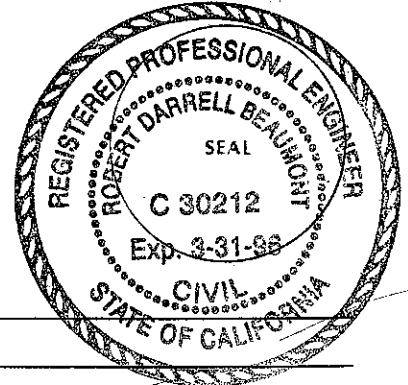
Signed David Contreras L.S. or R.C.E. Number 5065



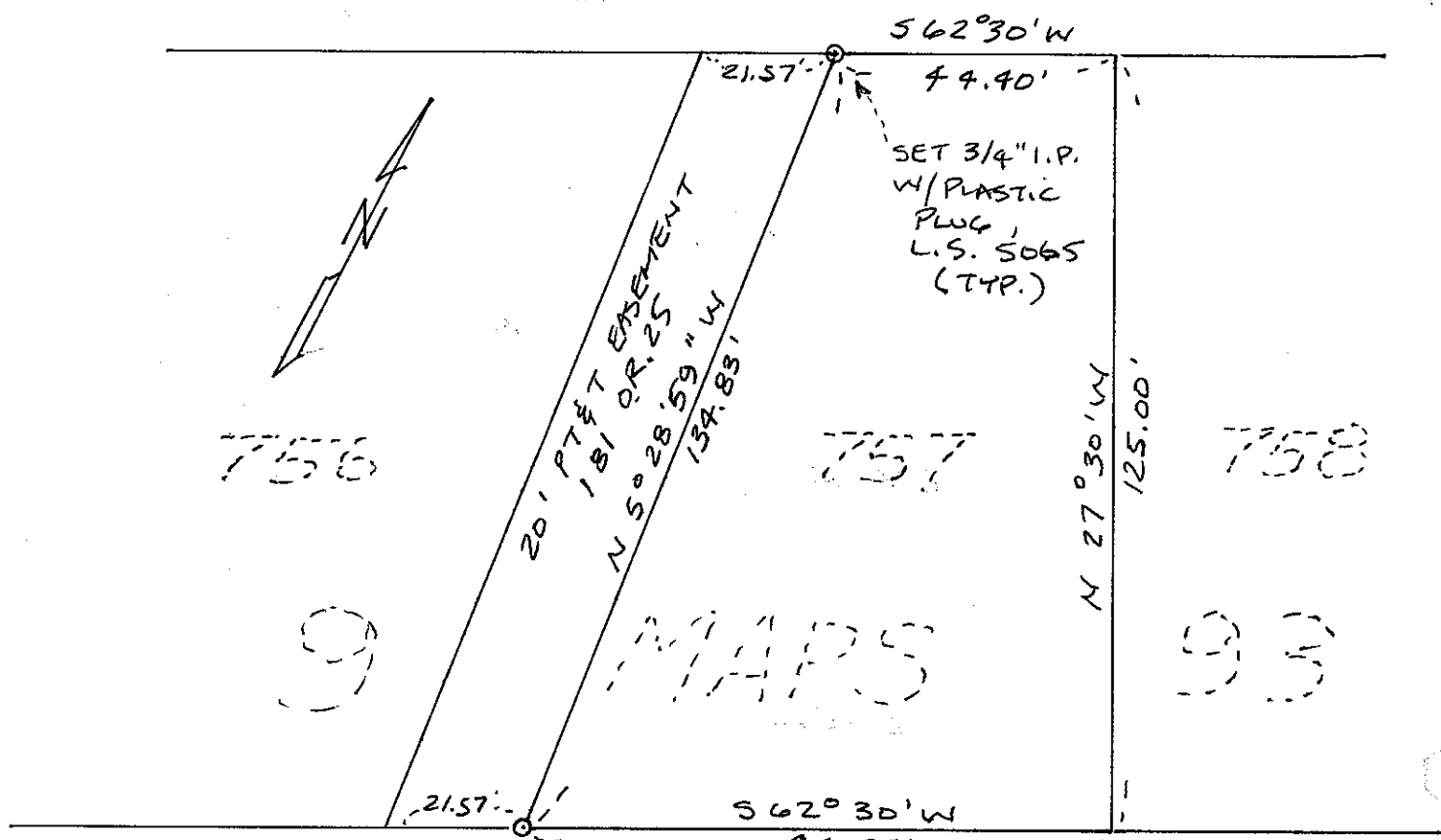
COUNTY SURVEYOR'S STATEMENT

This Corner Record was received SEPT. 27 19 94 and examined and filed 9-28 19 94

Signed Robert Darrell Beaumont Title CL



County Surveyor's Comment _____



562°30'W

44.40'

SET 3/4" I.P.
W/PLASTIC
PLUG,
L.S. 5065
(TYP.)

20' PT&T EASEMENT
181' R.O.W.
N 50°28'59" W
134.83'

N 27°30'W
125.00'

756

757

758

MARS

21.57'

562°30'W
94.95'

123.87' MEAS

SET NAIL &
TAG L.S. 5065

562°30'W

FD.
STANDARD
STREET
MONUMENT
(TYP.)

400.046' MEAS
(400.00' 9 R.M. 93)

CORTE NORTE
(40' R.O.W.)

SCALE 1" = 30'