

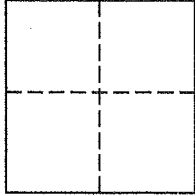
Lands of Bel Marin Keys Community Services District
Job #: 161732

CORNER RECORD

Assessor's Parcel Number 157-550-23

City of Novato in County of Marin, California

Brief Legal Description: Parcel G, as shown upon that certain map entitled, "Bel Marin Keys Unit 4", filed for record June 4, 1982 in Volume 18 of Maps at Page 72, Marin County Records.



CORNER TYPE

COORDINATES (Optional)

Government Corner Control N _____
Meander Property E _____
Rancho Other Zone _____ NAD27 NAD83
Date of Survey April 6, 2016 NAD 83 Epoch _____
Elev. _____
Vert. Datum: NGVD29 NAVD88
Meas. Units: Metric Imperial

Corner - Left as found Found and tagged Established Reestablished Rebuilt

Evidence used to identify or procedure used to establish or reestablish the corner:
See Page 2 of 2 for information

A description of the physical condition of the monument as found and as set or reset:
See Page 2 of 2 for information

SURVEYOR'S STATEMENT

This Corner Record was prepared by me or under my direction in conformance with
The Land Surveyor's Act on August 2, 2016.

Signed [Signature] P.L.S. 6649



COUNTY SURVEYOR'S STATEMENT

This Corner Record was received APRIL 21, 2016

and examined and filed AUGUST 25, 2016

Signed [Signature] P.L.S. or R.C.E. No. 7021

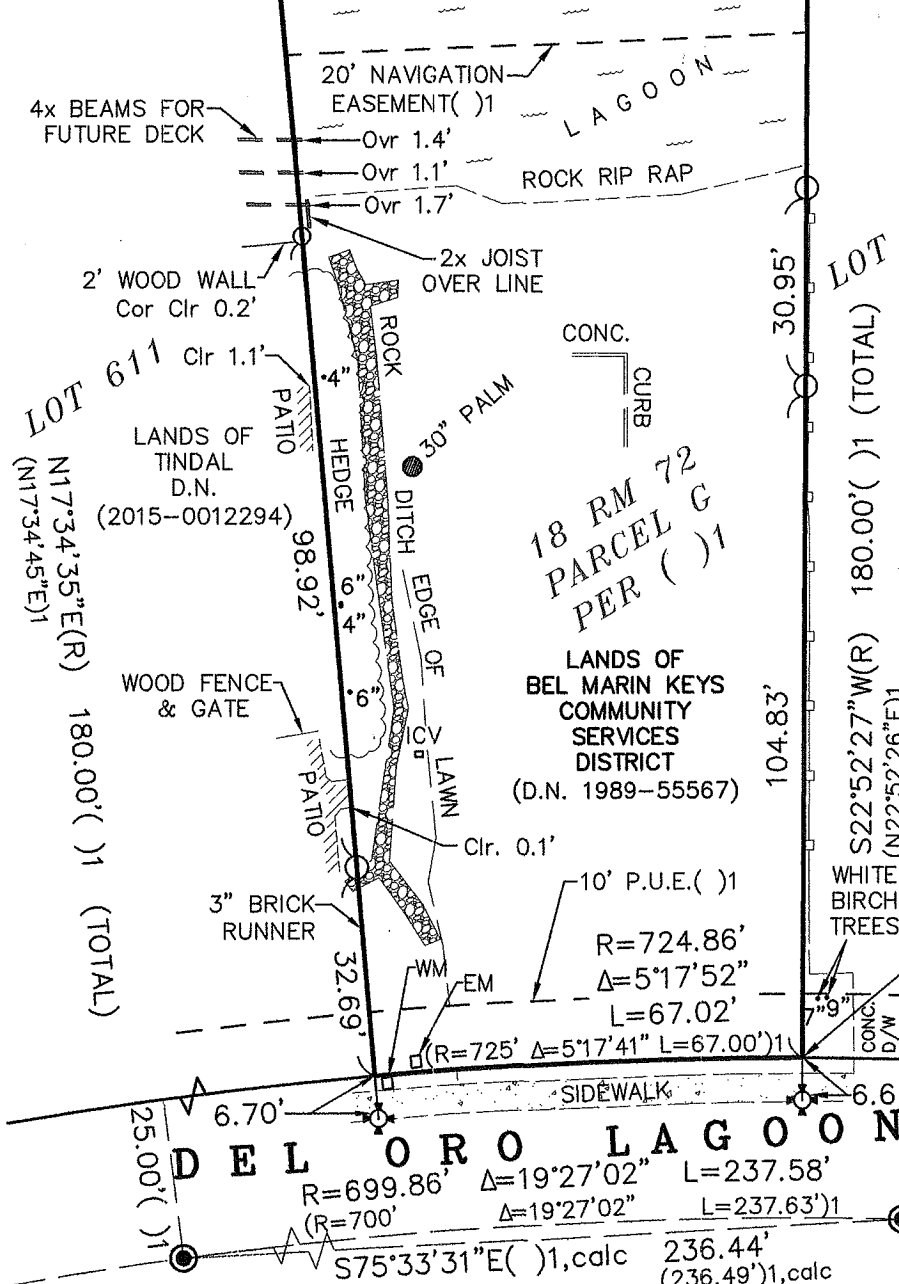
Title County Surveyor

County Surveyors' Comment _____



All distances shown are in feet and decimals thereof

LEGEND



- ⊙ Found 2" Brass Disk Set in 4" Concrete Cylinder, 0.5' below Surface
- ⊕ Found Curb Cut, Set Mag Nail & 1 1/2" Brass Washer, Stamped "LA Stevens PLS 6649"
- ⊙ Set Mag Nail & 1 1/2" Brass Washer, Stamped "LA Stevens PLS 6649"
- ⊙ Set 5/8" Rebar with Punched 1 1/2" Aluminum Cap, Stamped "LA Stevens PLS 6649"
- Utilities, as Noted
- Trunk of Vegetation, ∅ Noted
- Wood Fence
- N.T.S. Not to Scale
- ⚡ Not to Scale
- () 18 RM 72, Recorded June 24, 1982
- ICV Utility Box Stamped ICV
- (R) Radial

LOT 611
N17°34'35"E(R) 180.00'() 1 (TOTAL)
N17°34'45"E)1

LOT 610
S22°52'27"W(R) 180.00'() 1 (TOTAL)
S22°52'26"E)1

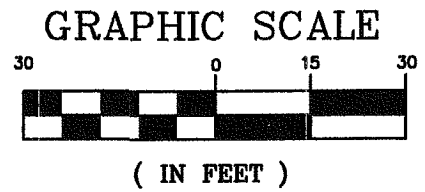
18 RM 72
PARCEL G
PER () 1

LANDS OF BEL MARIN KEYS
COMMUNITY SERVICES DISTRICT
(D.N. 1989-55567)

LANDS OF RAVINA TR.
(D.N. 2015-0039271)

DEL ORO LAGOON
N24°10'00"E 25.00'(R)
R=699.86' Δ=19°27'02" L=237.58'
(R=700' Δ=19°27'02" L=237.63')
S75°33'31"E() 1, calc 236.44'
(236.49')1, calc

BASIS OF BEARINGS
(50' R/W)



Corner Record Lands of Bel Marin Keys Community Services District

D.N. 1989-55567
Novato Marin County California
Scale: 1" = 30' April, 2016

L.A. Stevens & Associates, Inc.
Professional Land Surveyors * (415) 382-7713
7 Commercial Blvd., Suite 1 * Novato, CA 94949

Lawrence A. Stevens, PLS 6649