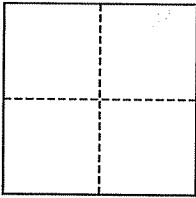


CORNER RECORD

City of Novato

Document Number APN 157-550-08
County of Marin, California

Brief Legal Description Lot 597, 18-RM-72



CORNER TYPE

Government Corner Control
Meander Property
Rancho Other
Date of Survey March 14, 2006

COORDINATES (Optional)

N. _____
E. _____
Zone _____ NAD27 NAD83
NAD83 Epoch _____
Elev. _____
Vert. Datum: NGVD29 NAVD88
Meas. Units: Metric Imperial

Corner- Left as found Found and tagged Established Reestablished Rebuilt

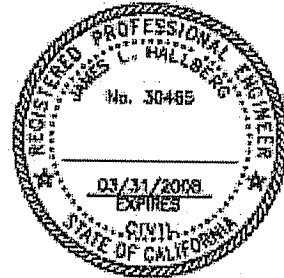
Identification and type of corner found: Evidence used to identify or procedure used to establish or reestablish the corner:
All points set per 18-RM-72.

A description of the physical condition of the monument as found and as set or reset: Set 3/4" Iron Pipe & Plug (RCE 30465), Nail & Tag (RCE 30465), and 2"x2" Wood Hub & Tack along Property Lines

SURVEYOR'S STATEMENT

This corner Record was prepared by me or under my direction in conformance with
the Land Surveyor's Act on March 15, 2006

Signed [Signature] P.L.S. or R.C.E. No. 30465

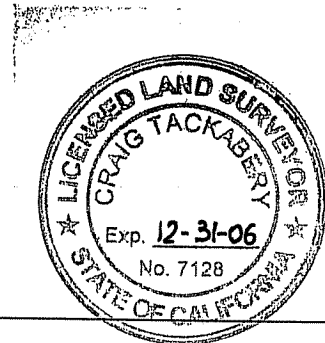


COUNTY SURVEYOR'S STATEMENT

This Corner Record was received MARCH 27, 2006
and examined and filed APRIL 27, 2006

Signed [Signature] P.L.S. or R.C.E. No. 7128

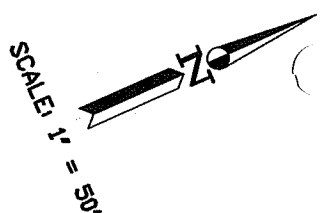
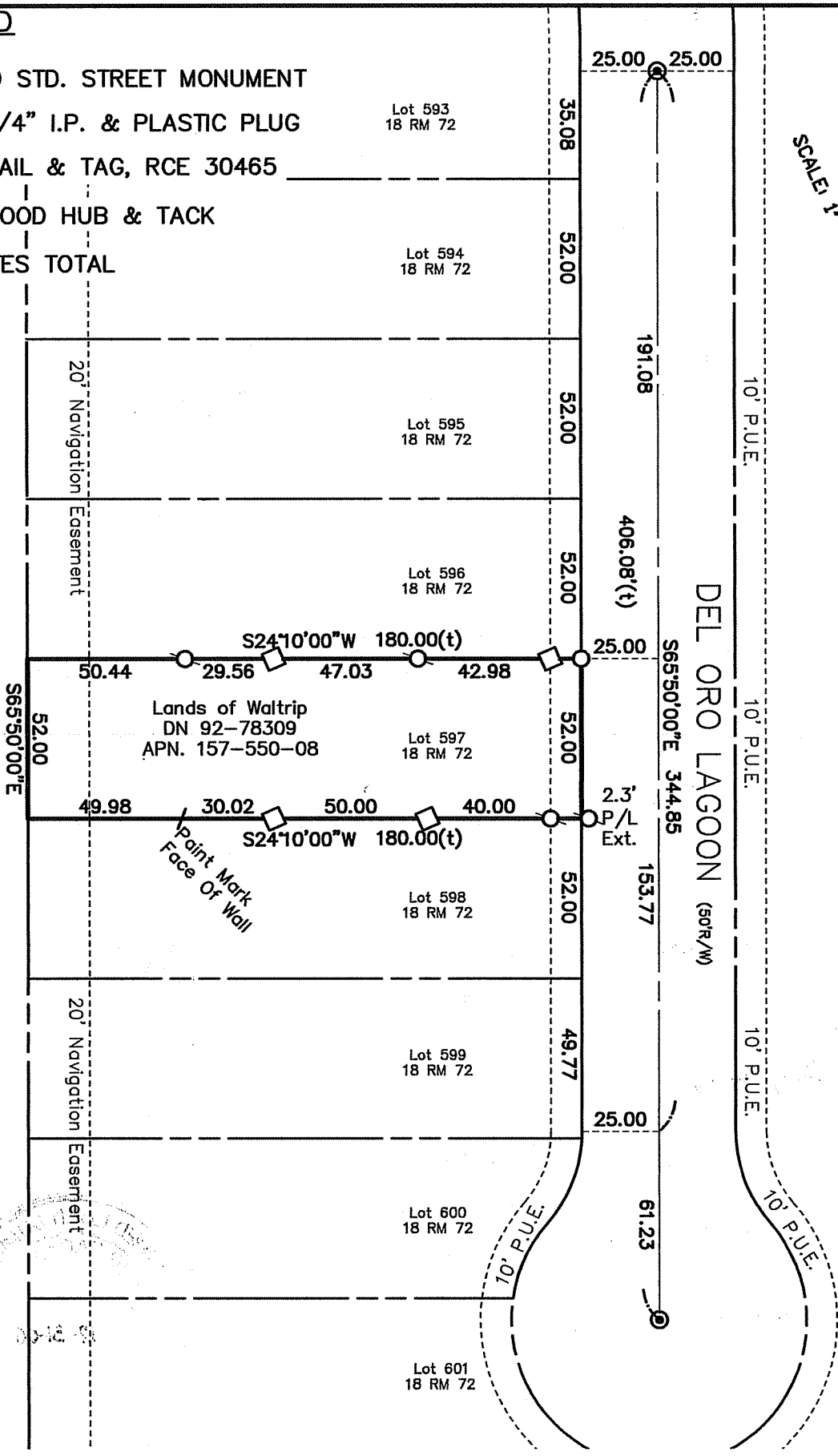
Title COUNTY SURVEYOR



County Surveyor's Comment _____

LEGEND

- FOUND STD. STREET MONUMENT
- SET 3/4" I.P. & PLASTIC PLUG
- ⊗ SET NAIL & TAG, RCE 30465
- SET WOOD HUB & TACK
- (t) DENOTES TOTAL



Note: All distances are in feet and decimals thereof.

SHEET	1	OF	1
SCALE:	1" = 30'	DESIGN:	PR
DATE:	03-14-06	DRAWN:	PR
FILE:	2006-032	CHECKED:	J.L.H

G:\Land Projects\2006-032\dwg\ROS.dwg

J.L. ENGINEERING
CIVIL ENGINEERS-LAND SURVEYORS
 1539 4th ST., SAN RAFAEL, CA. 94901 (415) 457-6647

Corner Record

Lands of Waltrip - 162 Del Oro Lagoon
 APN 157-550-08, Novato, Marin County, CA