

L. A. Stevens & Associates, Inc.
Professional Land Surveyors
Novato, California

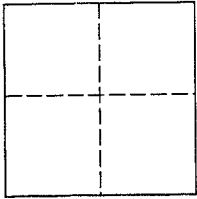
Lands of Gilardi
Job #: 05-849

CORNER RECORD

Document Number 157-421-09

City of Tiburon , County of Marin , California

Brief Legal Description: Being Lot 6 of that certain map entitled "Bel Marin Commerce Park", filed for record May 31, 1974 in Volume 16 of Maps at Page 2, Marin County Records.



CORNER TYPE

COORDINATES (Optional)

Government Corner Control
Meander Property
Rancho Other
Date of Survey March 29, 2004

N _____
E _____
Zone _____ NAD27 NAD83
NAD 83 Epoch _____
Elev. _____
Vert. Datum: NGVD29 NAVD88
Meas. Units: Metric Imperial

Corner - Left as found Found and tagged Established Reestablished Rebuilt

Identification and type of corner found: Evidence used to identify or procedure used to establish or reestablish the corner:
See Page 2 of 2

A description of the physical condition of the monument as found and as set or reset:
See Page 2 of 2

SURVEYOR'S STATEMENT

This Corner Record was prepared by me or under my direction in conformance with
The Land Surveyor's Act on April 26, 2005.

Signed [Signature] P.L.S 6649



COUNTY SURVEYOR'S STATEMENT

This Corner Record was received APRIL 29, 2005
and examined and filed MAY 9, 2005

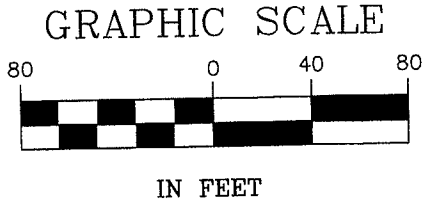
Signed [Signature] P.L.S. or R.C.E. No. 7128

Title COUNTY SURVEYOR

County Surveyors' Comment _____



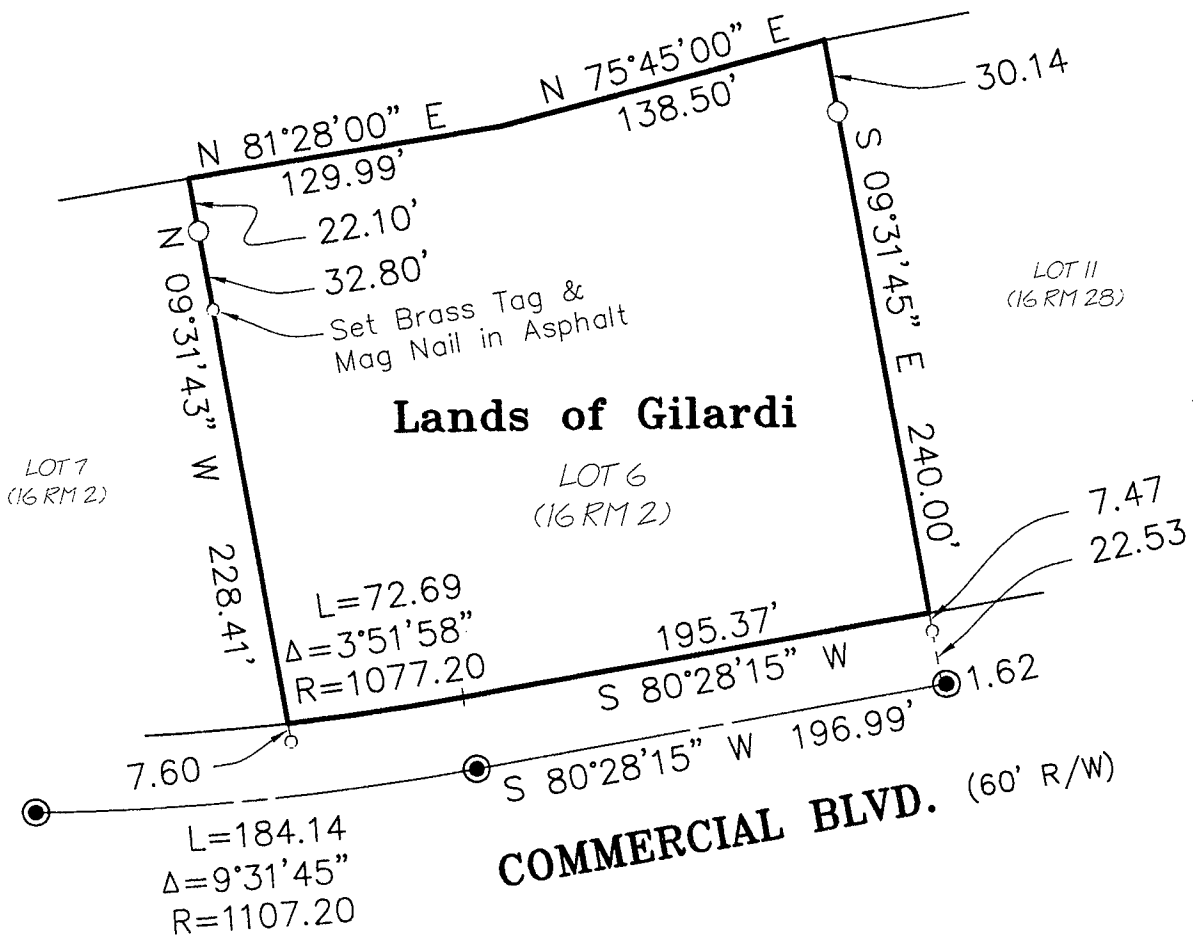
All distances shown are in feet and decimals thereof



LEGEND

- Found Standard Street Monument
- Set 3/4" Iron Pipe & Plastic Plug, Stamped "LS 6649"
- Set Rivet and Tag On Curb, Stamped "LS 6649", U.N.O.

U.N.O. Unless Noted Otherwise



Plat of Survey Lands of Gilardi

(Lot 6, 6 RM 2)

Novato Marin County California
Scale: 1" = 80' March, 2005

L.A. Stevens & Associates, Inc.

Professional Land Surveyors * (415) 382-7713
7 Commercial Blvd., Suite 1 * Novato, CA 94949

Job # 05-849

Page 2 Of 2

Lawrence A. Stevens, PLS 6649
my license expires 12/31/05

5/5/05