

CORNER RECORD

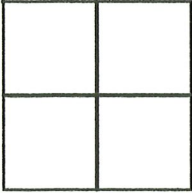
Agency Index DPW# 17-037

Document Number 157-391-23

City of Novato

County of Marin, California

Brief Legal Description Lot 389, Volume 13 of Maps at Page 29, Marin County Records



CORNER TYPE

Government Corner Control
Meander Property
Rancho Other

Date of Survey 3/23/2017

COORDINATES (Optional)

N. _____ E. _____

Elevation _____

Units Metric U.S. Survey Foot

Horizontal Datum _____

Zone _____ Epoch Date _____

Vertical Datum _____

Complies with Public Resources Code §§8801-8819

Complies with Public Resources Code §§8890-8902

PLS Act Ref: 8765(d) 8771 8773 Other:

Corner/Monument: Left as found Established Rebuilt Pre-Construction
 Found and tagged Reestablished Referenced Post-Construction

Narrative of corner identified and monument as found, set, reset, replaced, or removed:

See sheet #2 for description (s):

SURVEYOR'S STATEMENT

This Corner Record was prepared by me or under my direction in conformance with the Professional Land Surveyors' Act on 8/15/2017

Signed [Signature] P.L.S. 6649



COUNTY SURVEYOR'S STATEMENT

This Corner Record was received April 7, 2017

and examined and filed SEP. 07, 2017

Signed [Signature] P.L.S. or R.C.E. No. 9292

Title DEPUTY C.S.



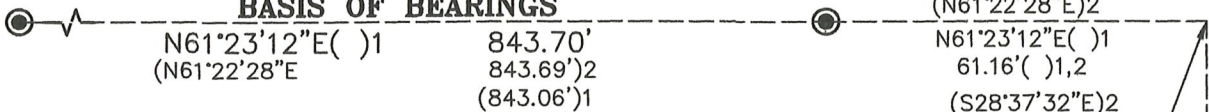
County Surveyor's Comment _____

All distances shown are in feet and decimals thereof

B A H A M A

R E E F (5 2 ' R / W)

BASIS OF BEARINGS



REFERENCES

() 1 13 RM 29

() 2 2012 ROS 145

L E G E N D

- Found 3/4" Iron Pipe & Wood Plug, N.D.R. (U.N.O.)
- ⊙ Found Standard Street Monument LANDS OF ROBINSON TRUST D.N. 2005-072573
- * Found Scribed Cross, N.D.R.
- Set Mag Nail & Brass Washer, Stamped "LA STEVENS PLS 6649"
- ⊙ Set 5/8" Rebar & Punched Aluminum Cap, Stamped "LA STEVENS PLS 6649", Perpendicular to Property Boundary

UNO Unless Noted Otherwise

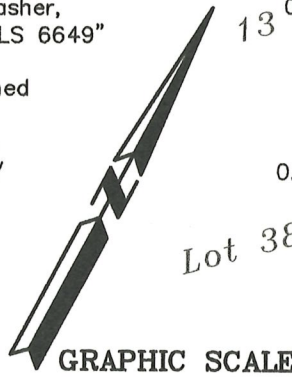
P.U.E. Public Utility Easement

□ Wood Fence

or N.T.S. Not To Scale

N.D.R. No Documented Record

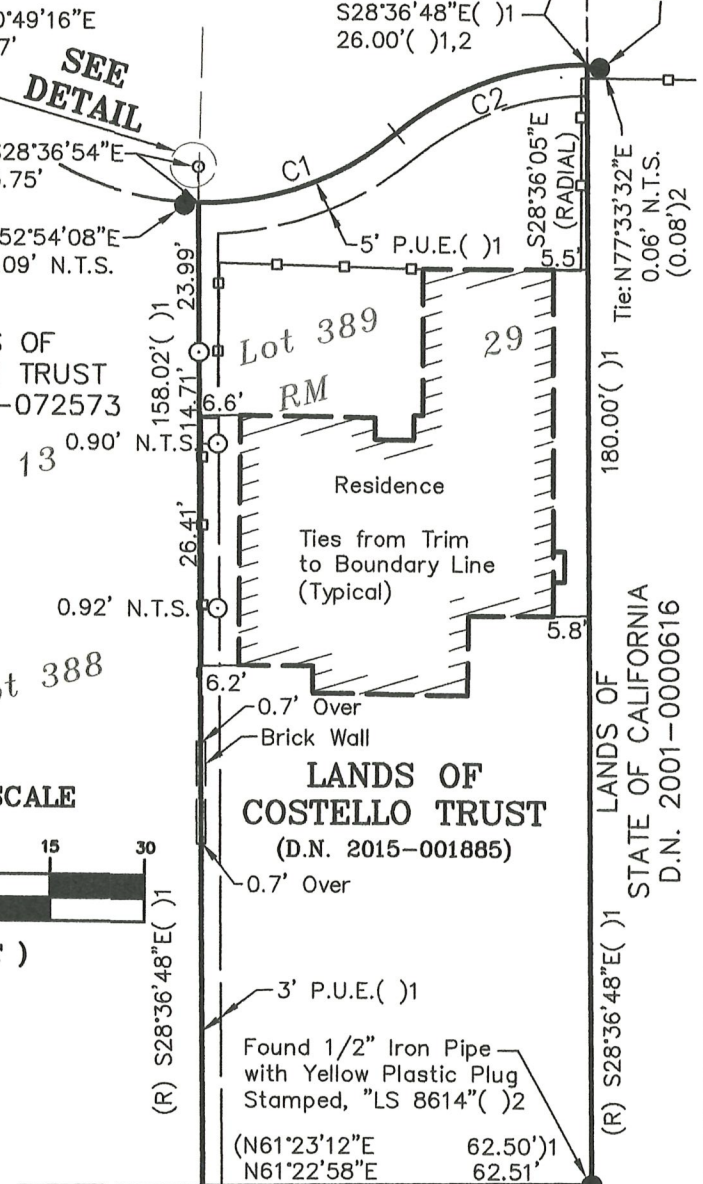
(R) Radial



GRAPHIC SCALE

(IN FEET)

Curve Table			
Curve #	Length	Radius	Delta
C1	34.49()1	48.00()1	41°10'14"()1
C2	33.16 (33.15)1	48.00()1	39°34'58" (39°34'15")1



LANDS OF
BEL MARIN KEYS COMMUNITY SERVICES
DISTRICT D.N. 2003-0078080

**Corner Record
Lands of
Costello Trust**
(Lot 389, 13 Maps 29)

Novato Marin County California
Scale: 1" = 30' August 2017

L.A. Stevens & Associates, Inc.

Professional Land Surveyors * (415) 382-7713
7 Commercial Blvd., Suite 1 * Novato, CA 94949

Job # 171800



Lawrence A. Stevens, PLS 6649

Copyright © Lawrence A. Stevens 2017