

L. A. Stevens & Associates, Inc.
Professional Land Surveyors
Novato, California

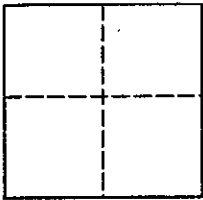
Lands of Arge
Job #: 01-571

CORNER RECORD

Document Number 157-381-19

Vicinity of Novato, County of Marin, California

Brief Legal Description: Lot 454, "Bel-Marin Keys Unit No. 3", 13 RM 29



CORNER TYPE

COORDINATES (Optional)

Government Corner Control

Meander Property

Rancho Other

Date of Survey November 19, 2002

N _____
E _____

Zone _____ NAD27 NAD83

NAD 83 Epoch

Elev.

Vert. Datum: NGVD29 NAVD88

Meas. Units: Metric Imperial

Corner - Left as found Found and tagged Established Reestablished Rebuilt

Identification and type of corner found: Evidence used to identify or procedure used to establish or reestablish the corner:
See Page 2 of 2, "Plat of Survey"

A description of the physical condition of the monument as found and as set or reset:
See Page 2 of 2, "Plat of Survey"

SURVEYOR'S STATEMENT

This Corner Record was prepared by me or under my direction in conformance with

The Land Surveyor's Act on December 6, 2002

Signed [Signature] P.L.S. 6649



COUNTY SURVEYOR'S STATEMENT

This Corner Record was received DECEMBER 16, 2002

and examined and filed DECEMBER 27, 2002

Signed [Signature] P.L.S. or R.C.E. No. 30212

Title DEPUTY

County Surveyors' Comment _____

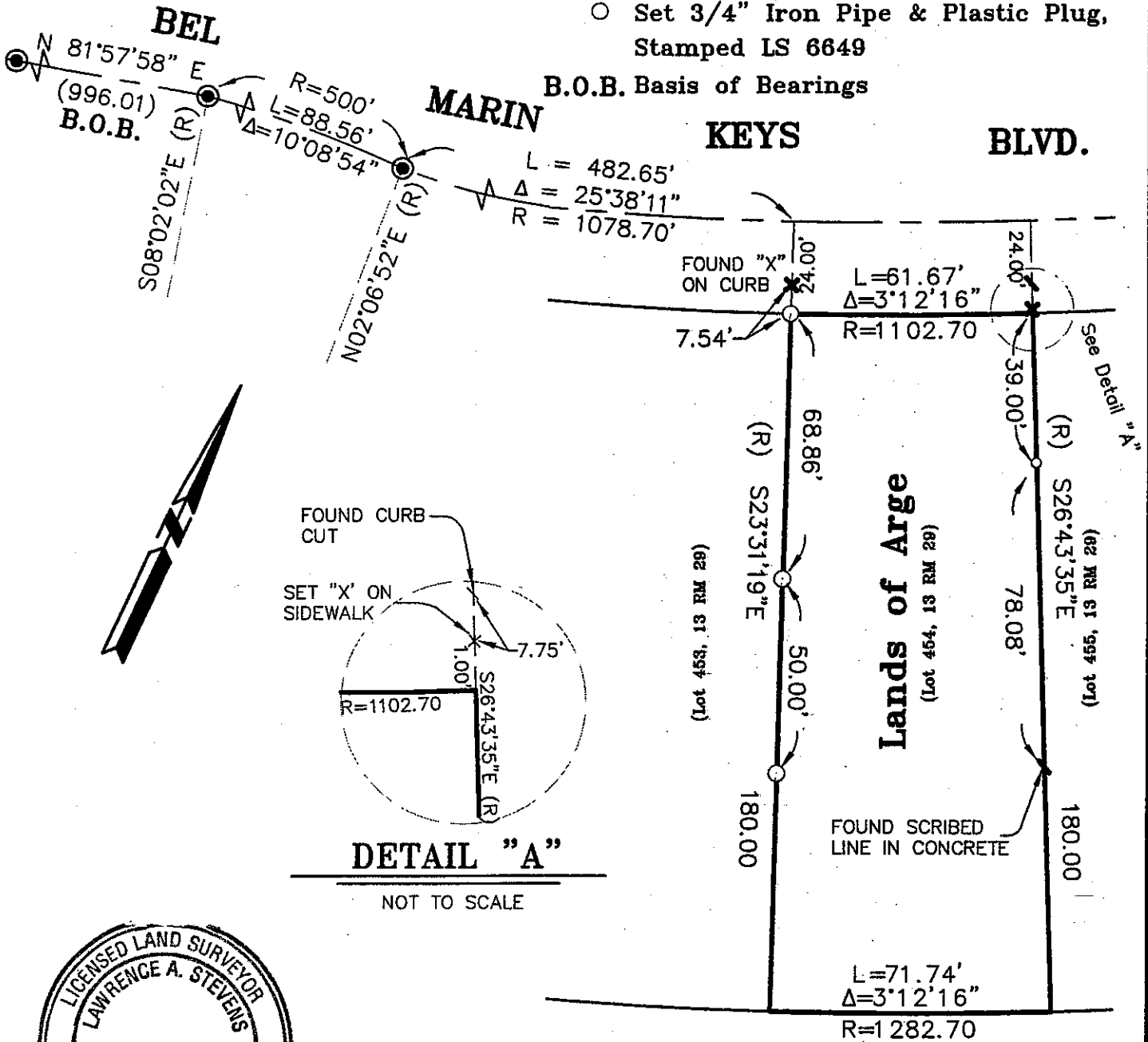


All distances shown are in feet and decimals thereof

LEGEND

- Found Standard Street Monument
- Set Nail & Tag, Stamped LS 6649
- Set 3/4" Iron Pipe & Plastic Plug, Stamped LS 6649

B.O.B. Basis of Bearings



Plat of Survey Lands of Arge

(Lot 454, 13 RM 29)

Novato Marin County California
 Scale: 1" = 40' November 2002

L.A. Stevens & Associates, Inc.

Professional Land Surveyors • (415) 382-8321
 1132 Bel Marin Keys Blvd. • Novato, CA 94949

Lawrence A. Stevens
 Lawrence A. Stevens, PLS 6649
 my license expires 12/31/03