

CORNER RECORD

Document Number

157-381-16

City of Novato

County of Marin

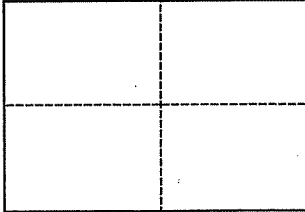
California

Brief Legal Description

APN 157-381-16, Lot 451 of 13 RM 29

CORNER TYPE

**COORDINATES
(Optional)**



Government Corner Control
 Meander Property
 Rancho Other
 Date of Survey May 24, 2012

North _____
 East _____
 Zone _____ Datum _____
 Elev. _____

Corner _____ Left as found Found and tagged Established Reestablished Rebuilt

Identification and type of corner found: Evidence used to identify or procedure used to establish or reestablish the corner:

Found and held Standard Street Monuments per 13 RM 29

A description of the physical condition of the monument as found and as set or reset:

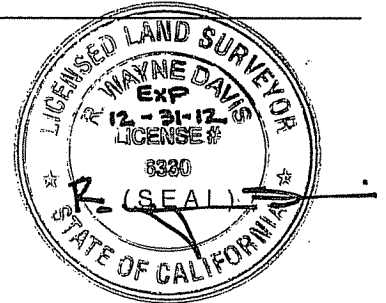
Set X in Top of Curb at Westerly Property Line Extension and Point on Line. Set 1/2" Rebar Tagged

L.S. 6330 along Easterly Line (see attached exhibit).

SURVEYOR'S STATEMENT

This Corner Record was prepared by me or under my direction in conformance with the Land Surveyors' Act on July 8, 2012

Signed [Signature] L.S. or R.C.E. Number L.S. 6330



COUNTY SURVEYOR'S STATEMENT

This Corner Record was received JULY 16, 2012

and examined and filed AUGUST 20, 2012

Signed [Signature] Title COUNTY SURVEYOR



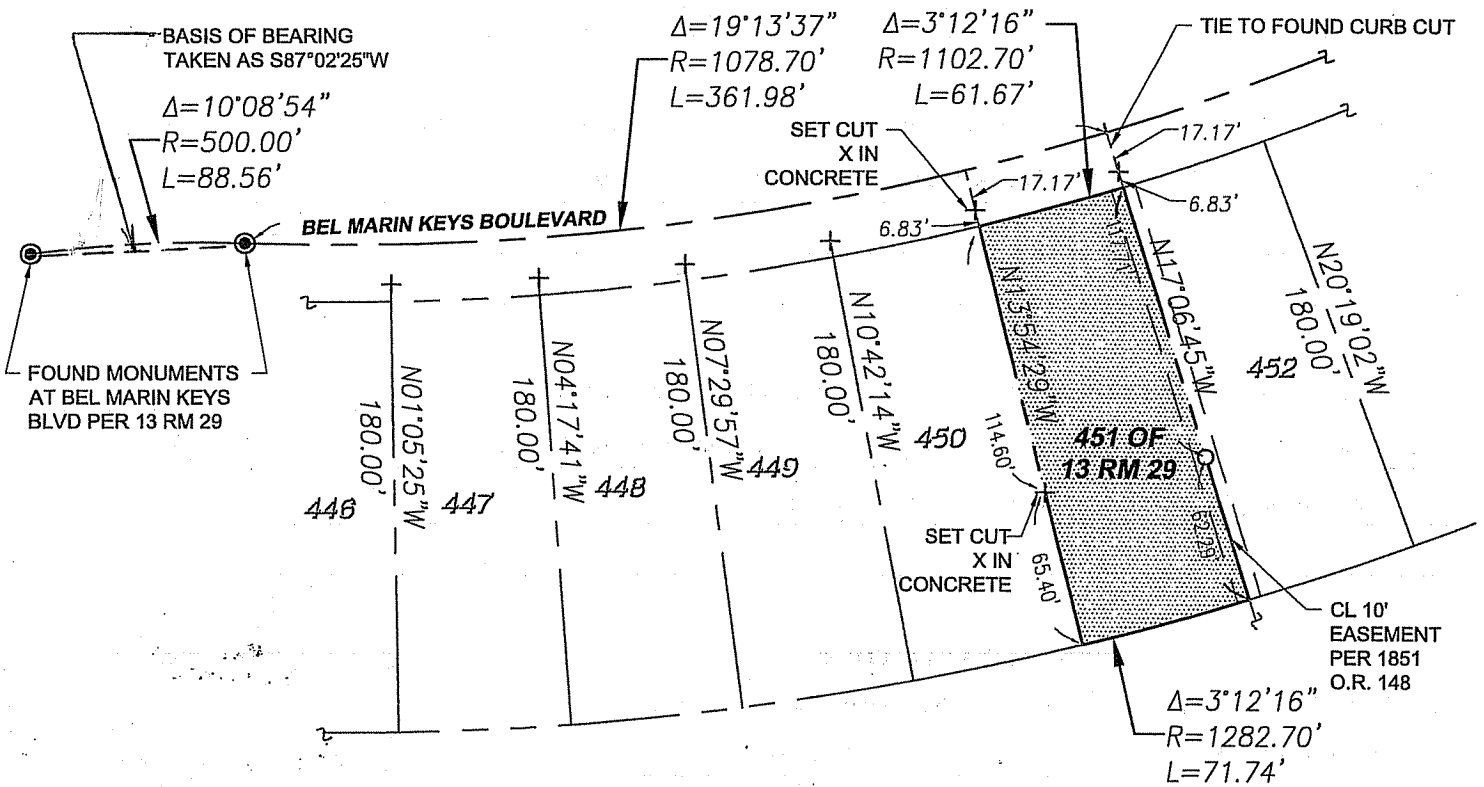
County Surveyor's Comment

ALL DISTANCES SHOWN ARE IN FEET AND DECIMALS THEREOF

LEGEND

EXISTING

	BOUNDARY LINE
	CENTERLINE
	EASEMENT
	PROPERTY / LOT LINE
	FOUND SURVEY STREET MONUMENT
	FOUND SCRIBED CROSS OR CURB CUT
	SET REBAR AND TAG, LS 6330



Graphic Scale (in feet)



1 inch = 80 ft.



R.W. DAVIS & ASSOCIATES LAND SURVEYORS

45 Leveroni Court
 Novato CA 94949
 L.S. 6330
 Tel. (415) 883-9099
 Fax (415) 883-2016
 Email: RWDAVIS@RWDAVIS-SURVEY.COM

© 2011

Rev.

Job No. 372-001

Date: 07-08-2012

Scale: 1" = 80'

CORNER RECORD

APN 157-381-16

LOT 451 PER 13 RM 29

NOVATO

MARIN

CALIFORNIA