

CORNER RECORD

Agency Index

20-056

Document Number

157-372-10

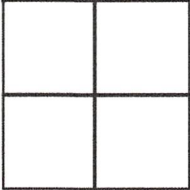
City of Novato

County of

MARIN

, California

Brief Legal Description Lot 357, 13 RM 29



CORNER TYPE

Government Corner Control
Meander Property
Rancho Other

COORDINATES (Optional)

N. _____ E. _____
 Elevation _____
 Units Metric U.S. Survey Foot
 Horizontal Datum _____
Zone _____ Epoch Date _____
Vertical Datum _____

Date of Survey August 11, 2020

Complies with Public Resources Code §§8801-8819
 Complies with Public Resources Code §§8890-8902

PLS Act Ref:

8765(d)

8771

8773

Other:

Corner/
Monument:

Left as found

Established

Rebuilt

Pre-Construction

Found and tagged

Reestablished

Referenced

Post-Construction

Narrative of corner identified and monument as found, set, reset, replaced, or removed:

See sheet #2 for description (s):

SURVEYOR'S STATEMENT

This Corner Record was prepared by me or under my direction in conformance with the Professional Land Surveyors' Act on August 14, 2020

Signed [Signature] P.L.S. or R.C.E. No. 6649



COUNTY SURVEYOR'S STATEMENT

This Corner Record was received 08/27/2020

and examined and filed 12/04/2020

Signed [Signature] P.L.S. or R.C.E. No. 9292

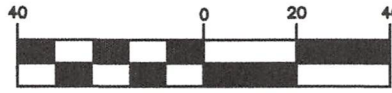
Title DEPUTY C.S.



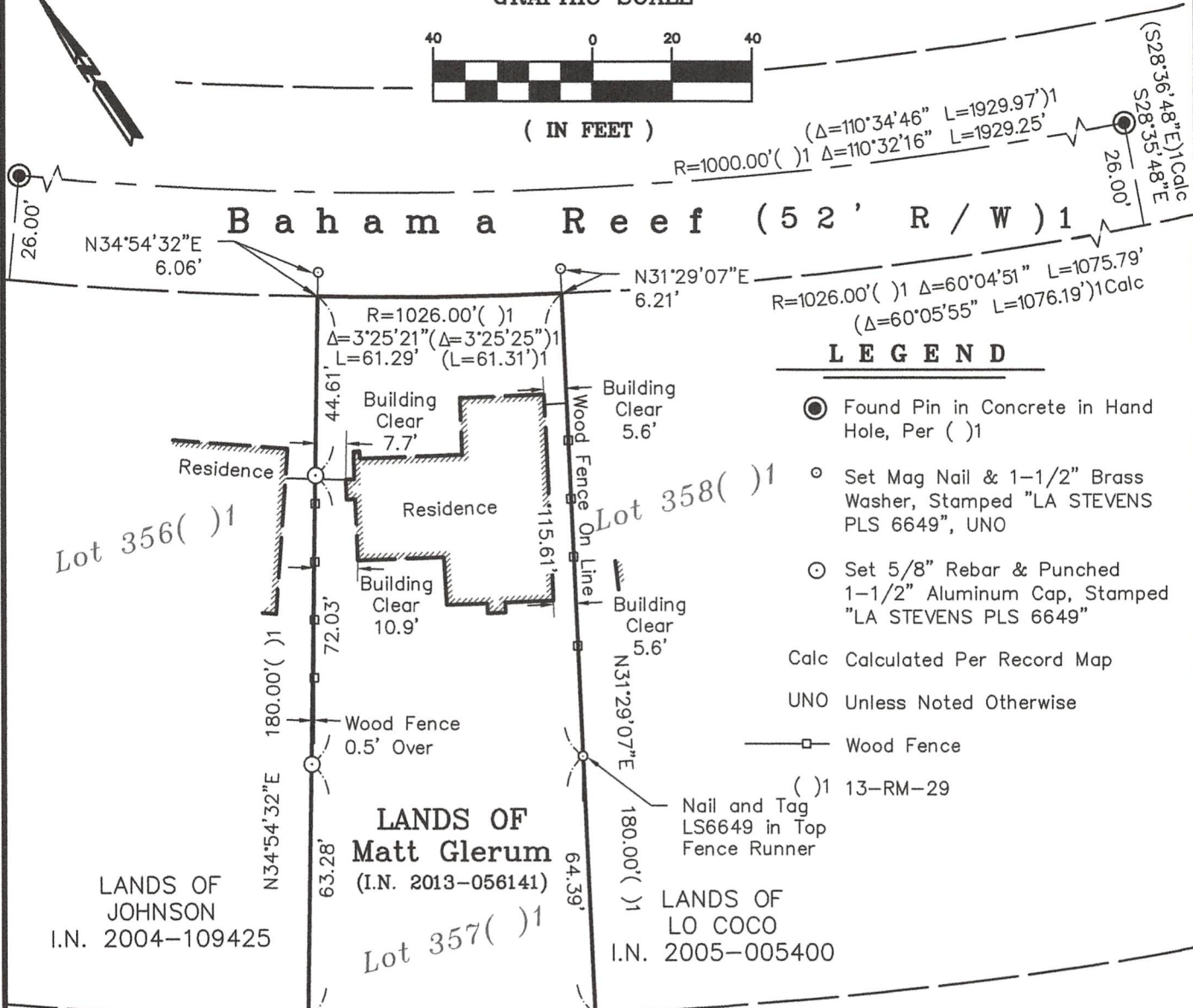
County Surveyor's Comment _____

All distances shown are in feet and decimals thereof

GRAPHIC SCALE



(IN FEET)



LEGEND

- Found Pin in Concrete in Hand Hole, Per ()
Set Mag Nail & 1-1/2" Brass Washer, Stamped "LA STEVENS PLS 6649", UNO
Set 5/8" Rebar & Punched 1-1/2" Aluminum Cap, Stamped "LA STEVENS PLS 6649"
Calc Calculated Per Record Map
UNO Unless Noted Otherwise
Wood Fence
() 13-RM-29

BASIS OF BEARINGS

The Basis of Bearings for this survey is N63°19'25"W () Calc between found street monuments on Bahama Reef



8-14-2020

Corner Record Lands of Matt Glerum

(I.N. 2013-056141) (Lot 357, 13 RM 29)

Novato Marin County California Scale: 1" = 40' August, 2020

L.A. Stevens & Associates, Inc.

Professional Land Surveyors * (415) 382-7713 7 Commercial Blvd., Suite 1 * Novato, CA 94949

Lawrence A. Stevens, PLS 6649

Copyright (C) Lawrence A. Stevens 2020

Job # 202042