

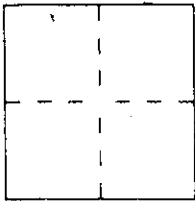
CORNER RECORD

Document Number A.P. # 157-292-19

City of NOVATO

County of MARIN, California

Brief Legal Description LOT 241 AS SHOWN ON 12 OF MAPS AT PAGE 87



CORNER TYPE

Government Corner Control
 Meander Property
 Rancho Other
 Date of Survey _____

COORDINATES (Optional)

N. _____
 E. _____
 Zone _____ Datum _____
 Elev. _____

Corner — Left as found Found and tagged Established Reestablished Rebuilt

Identification and type of corner found: Evidence used to identify or procedure used to establish or reestablish the corner:

HELD RECORD MONUMENTS PER 12 OF MAPS PAGE 87 WITH RECORD BEARINGS AND DISTANCE.

A description of the physical condition of the monument as found and as set or reset: _____

SET SCRIBED LINES AND HUBS WITH TACKS TO ESTABLISH PROPERTY LINES. FOUND CURB CUTS IN AGREEMENT WITH THE SAME.

SURVEYOR'S STATEMENT

This Corner Record was prepared by me or under my direction in conformance with the Land Surveyors' Act on JANUARY 26, 2000

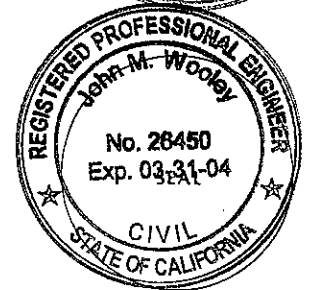
Signed _____ L.S. or R.C.E. Number LS 6330



COUNTY SURVEYOR'S STATEMENT

This Corner Record was received 4-28-2000 and examined and filed 5/1-2000

Signed John M. Woolley Title DEPUTY



County Surveyor's Comment _____

CARIBBE ISLE

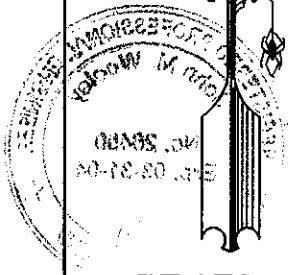
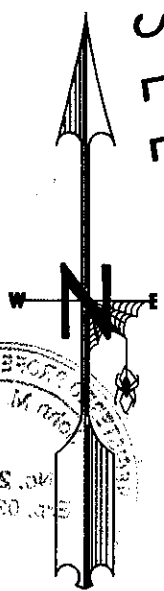
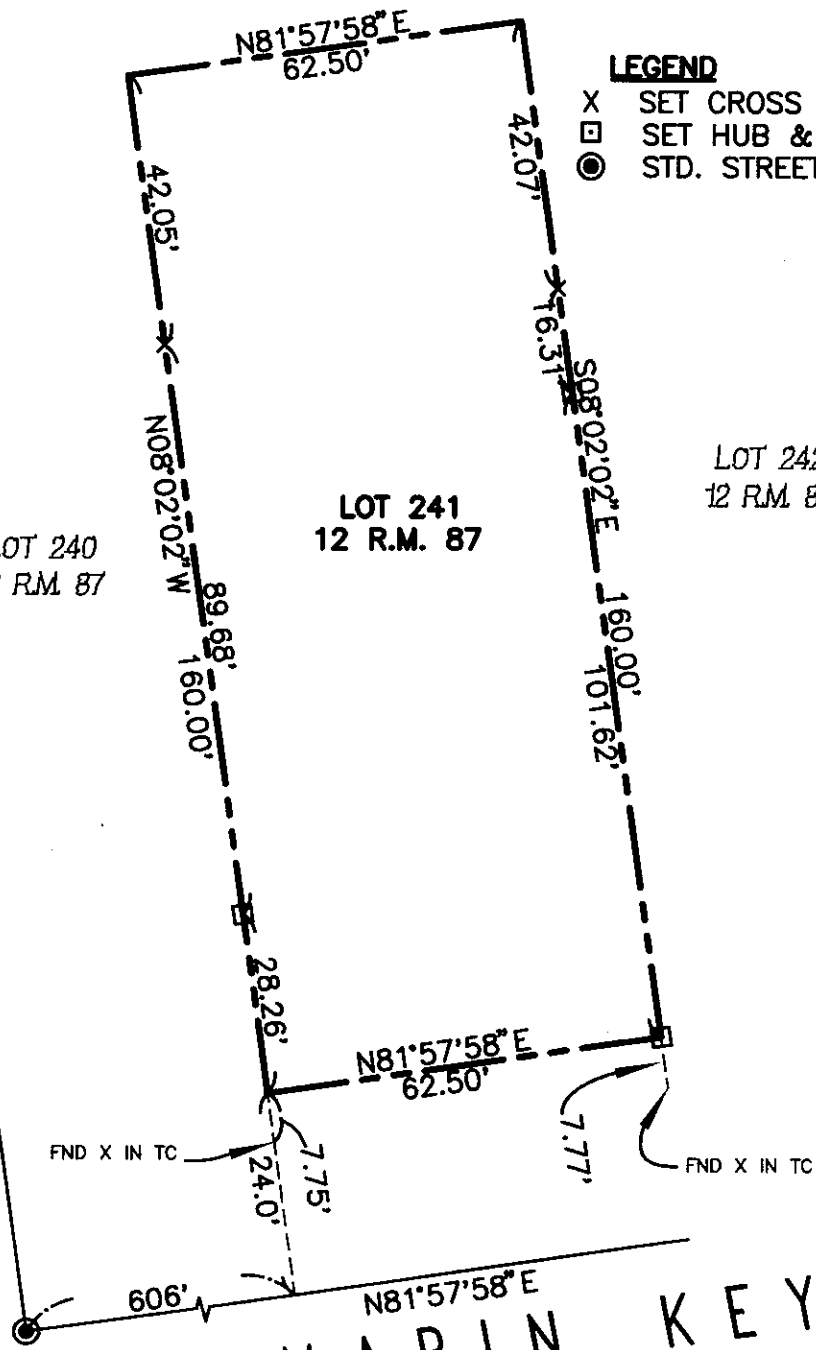
LOT 240
12 R.M. 87

LOT 241
12 R.M. 87

LOT 242
12 R.M. 87

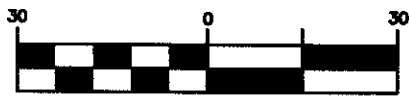
LEGEND

- X SET CROSS IN CONCRETE
- SET HUB & TACK
- STD. STREET MON.



BEL MARIN KEYS

GRAPHIC SCALE



(IN FEET)
1 inch = 30 ft.

A.P. # 157-292-19

LOT #241
BEL-MARIN KEYS
UNIT NO. 2
BOOK 12 OF MAPS
AT PAGE 87