

L. A. Stevens & Associates, Inc.
Professional Land Surveyors
Novato, California

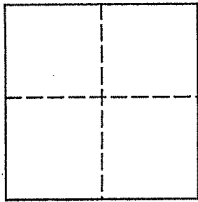
Lands of Gelardi
Job #: 06-948

CORNER RECORD

Document Number 157-260-31

Vicinity of Novato, County of Marin, California

Brief Legal Description: Being Lot 90 of that certain map entitled "Bel Marin Keys Unit No. 1-C, filed for record On May 11, 1964 in Book 12 of Maps at Page 69, Marin County Records.



CORNER TYPE

Government Corner Control
Meander Property
Rancho Other
Date of Survey May 3, 2006

COORDINATES (Optional)

N _____
E _____
Zone _____ NAD27 NAD83
NAD 83 Epoch _____
Elev. _____
Vert. Datum: NGVD29 NAVD88
Meas. Units: Metric Imperial

Corner - Left as found Found and tagged Established Reestablished Rebuilt

Identification and type of corner found: Evidence used to identify or procedure used to establish or reestablish the corner:
See Page 2 of 2

A description of the physical condition of the monument as found and as set or reset:
See Page 2 of 2

SURVEYOR'S STATEMENT

This Corner Record was prepared by me or under my direction in conformance with
The Land Surveyor's Act on August 3, 2006.

Signed [Signature] P.L.S. 6649



COUNTY SURVEYOR'S STATEMENT

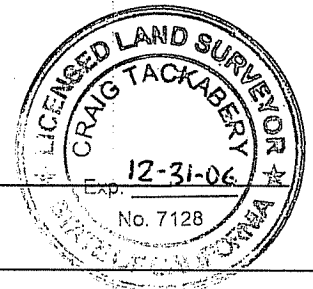
This Corner Record was received SEPTEMBER 7, 2006

And examined and filed SEPTEMBER 11, 2006

Signed [Signature] P.L.S. or R.C.E. No. 7128

Title COUNTY SURVEYOR

County Surveyors' Comment _____

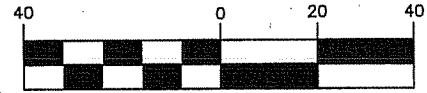


All distances shown are in feet and decimals thereof

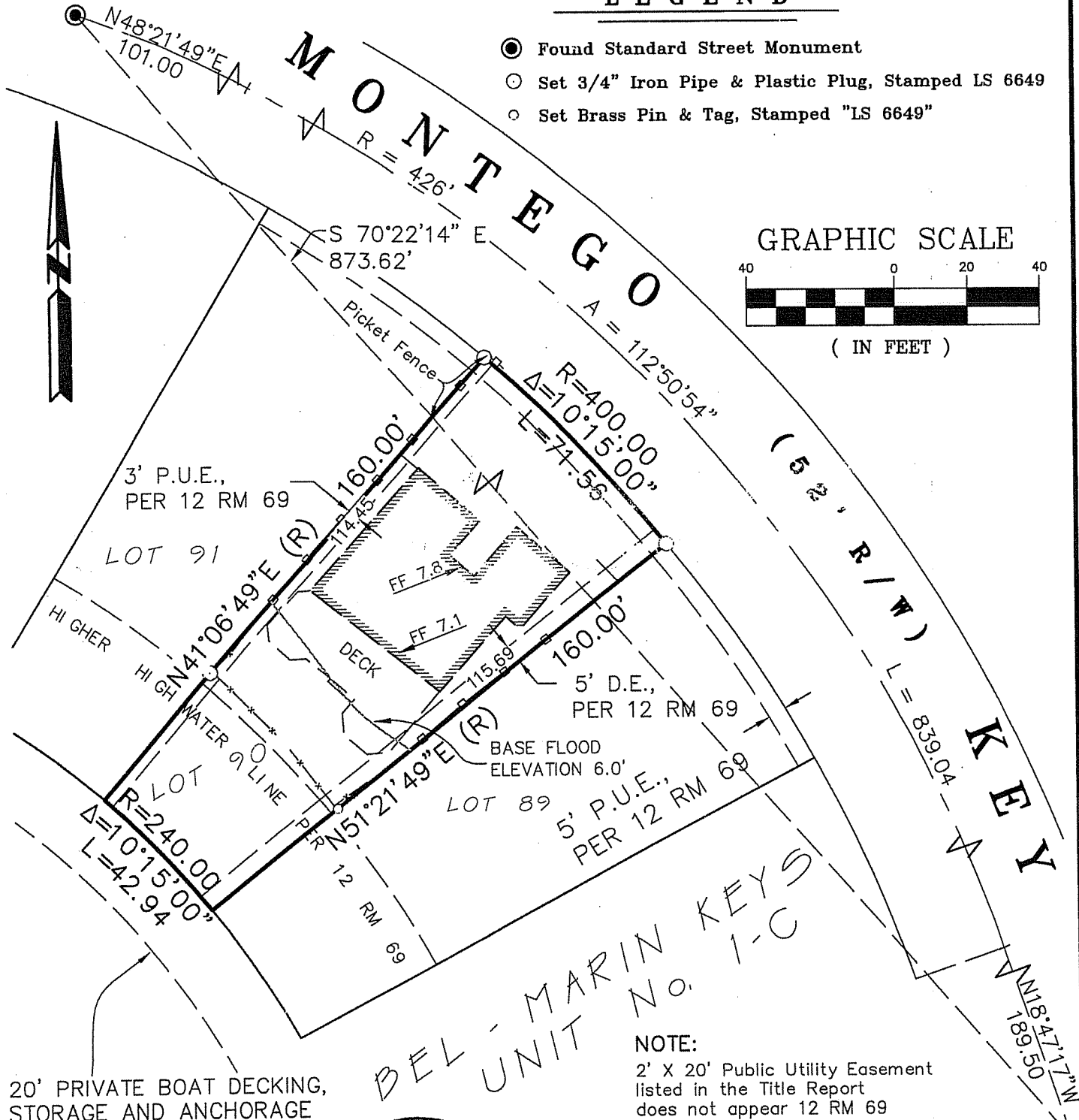
LEGEND

- Found Standard Street Monument
- Set 3/4" Iron Pipe & Plastic Plug, Stamped LS 6649
- Set Brass Pin & Tag, Stamped "LS 6649"

GRAPHIC SCALE



(IN FEET)



20' PRIVATE BOAT DECKING, STORAGE AND ANCHORAGE EASEMENT, PER 11 RM 58

DEL MARIN KEYS UNIT No. 1-C

NOTE:
2' X 20' Public Utility Easement listed in the Title Report does not appear 12 RM 69

Plat of Survey Lands of Gelardi

(Being Lot 90, Book 12 of Maps, Page 69)

Novato Marin County California
Scale: 1" = 40' May 2006

L.A. Stevens & Associates, Inc.

Professional Land Surveyors * (415) 382-7713
7 Commercial Blvd., Suite 1 * Novato, CA 94949

Job # 08-948

Page 2 Of 2



Lawrence A. Stevens
 Lawrence A. Stevens, PLS 6649
 my license expires 12/31/07